



**Home Office**  
BUILDING A SAFE, JUST  
AND TOLERANT SOCIETY

**DWP** Department for  
Work and Pensions

 **HM Revenue  
& Customs**

 **Communities**  
and Local Government

# Accession Monitoring Report

## May 2004 – September 2006

A joint online report by the Home Office,  
Department for Work and Pensions,  
HM Revenue & Customs and  
Department for Communities and Local Government.

Published 21 November 2006

© Crown Copyright 2006

This publication is not available in printed format

## INTRODUCTION

BACKGROUND.....	1
KEY FINDINGS.....	1
NOTE ON THE PUBLICATION.....	2
NOTE ON THE WORKER REGISTRATION SCHEMADATA.....	2
TECHNICAL NOTES.....	2
LINKS TO USEFUL WEB-SITES.....	3

## WORKER REGISTRATION SCHEME (WRS)

### APPLICANTS AND APPLICATIONS TO THE WRS

1. Applicants.....	4
1.a. Applications.....	6

### APPLICANT PROFILE

2. Nationality of applicants.....	8
-----------------------------------	---

### PROFILE OF REGISTERED WORKERS

3. Age and Gender of registered workers.....	10
4. Dependants of registered workers.....	12
5. Occupation groups in which registered workers are employed.....	13
6. Occupations in which registered workers are employed.....	15
7. Registered workers' hours of work and wages.....	17
8. Proportion of registered workers in temporary/permanent employment.....	17
9. Intended length of stay.....	17
10. Geographical distribution of registered workers.....	18
11. Geographical distribution of registered workers by occupation group.....	20
12. Nationality of registered workers by occupation group.....	23

### NATIONAL INSURANCE NUMBERS

13. National Insurance Numbers allocated and purpose of allocation.....	25
14. National Insurance Number applications by region.....	26

### BENEFITS AND TAX CREDITS

15. Applications for tax-funded, income-related benefits.....	27
16. Nationality of applicants for tax-funded, income-related benefits.....	28
17. Applications for tax-funded, income-related benefits by region.....	28
18. Applications for Child Benefit.....	29
19. Applications for Tax Credits.....	30

### HOUSING AND HOMELESSNESS SUPPORT

20. Local Authority Lettings.....	31
21. Homelessness assistance.....	32

<b>ANNEX A</b> All occupations in which registered workers are employed.....	34
------------------------------------------------------------------------------	----

## INTRODUCTION

### Background

On 1 May 2004, ten countries, Cyprus, Czech Republic, Estonia, Hungary, Latvia, Lithuania, Malta, Poland, Slovakia and Slovenia, joined the European Union (EU). From that date, nationals of Malta and Cyprus have had full free movement rights and rights to work, throughout the EU. Prior to enlargement, existing EU member states had the right to regulate access to their labour markets by nationals of the other eight countries – the 'Accession 8' or 'A8'. The UK Government put in place transitional measures to regulate A8 nationals' access to the labour market (via the Worker Registration Scheme) and to restrict access to benefits.

The data in this publication are based on Management Information and are provisional and may be subject to change. The data are **not** National Statistics.

### Key Findings

- Nationals from the A8 countries continue to come to the UK to work, contributing to the success of the UK economy, while making few demands of our welfare system.
- In total there were 59,000 applicants to the Worker Registration Scheme (WRS) in Q3 2006, compared to 56,000 in Q2 2006, and 61,000 in Q3 2005.
- A8 workers are continuing to go where the work is, helping to fill the gaps in our labour market, particularly in administration, business and management, hospitality and catering, agriculture, manufacturing and food, fish and meat processing.
- In many cases, A8 nationals are supporting the provision of public services in communities across the UK. Between July 2004 and September 2006, almost 6,600 A8 nationals registered as bus, lorry and coach drivers and 14,200 as care workers. There were 1,700 teachers, researchers and classroom assistants; 700 dental practitioners (including hygienists and dental nurses); and over 2,300 GPs, hospital doctors, nurses and medical specialists.
- 13% of the total registered workers were based in London. However, workers are based all over the UK, and the proportion applying to London fell from 25% in Q2 2004 to 9% in Q3 2006. As the proportion applying elsewhere has increased, the Anglia region has now overtaken London with 15% of the total registered workers.
- 97% of workers were working full time, and 98% of applications for National Insurance numbers made by A8 nationals between May 2004 and September 2006 were for employment purposes.
- The vast majority of workers since May 2004 are young: 82% aged between 18 and 34. 93% of workers state that they have no dependants living with them in the UK when they registered, and only 3% had dependants under the age of 17 with them.
- The numbers applying for tax-funded income-related benefits and housing support remain low. For example, 1,664 applications for Income Support and Jobseeker's Allowance were processed in Q3 2006, of which 476 were allowed to proceed for further consideration, compared to 1,558 and 350 in Q2 2006 and 810 and 49 in Q3 2005.

### Note on the publication

This is the ninth of a series of quarterly reports based on provisional Management Information collected through the WRS and manual monitoring of applications for National Insurance numbers, claims for benefits, applications for tax credits and applications for housing and homelessness assistance. The figures published in the earlier reports have been updated to include applications that were previously outstanding. The presentation of the Home Office data in this report has been changed to be more consistent with the way in which National Statistics, specifically the Home Office asylum statistics, are published. The data are presented in quarters and annually, except for 2004, which has been shown as a total for the part year May to December 2004.

### Note on the Worker Registration Scheme data

Nationals of the A8 countries who wish to take up employment in the UK for a period of at least a month are generally required to register with the WRS. The statistics in this publication are only of those that have registered with the Home Office to work in the UK. Workers who are self-employed do not need to register and are therefore **not** included in these figures; there may also be other workers from the accession countries who for one reason or another do not register and are thus also not included in these figures. The data from the WRS provided here are data on applicants to the scheme rather than applications (with the exception of Table 1.a and section 1.a.). Applicants must register more than once if they are employed by more than one employer. They must also re-register if they change employer. Each application to the WRS therefore represents one job, not one applicant. To avoid counting applicants more than once, each applicant is represented only once in this report, with information relating to the **first** job for which he/she registered.

Data are provisional and an estimated 3,800 applications from the period remain outstanding, of which 1,575 were received in Q3 2006. In these cases, final decisions had not been issued at the time of producing this report.

All WRS data in this report are sorted according to the date the applicant applied. The 'date applied' is the date the applicant puts on the application form. There will be cases in which there is a delay between when the forms are filled in or posted and when the applications are received by the Home Office.

Please note that we have used the term 'occupation group', under sections 5, 11, and 12, to show where people are working rather than 'sectors', since our previous use of the latter term does not conform to the National Statistics definition of Standard Industry Codes. These, together with our listing of occupations, which are not the same as the National Statistics Standard Occupational Codes, are currently being reviewed with the aim of the early implementation of recognised standard terminology.

The number of applicants to the WRS does **not** represent a measurement of net migration to the UK (inflows minus outflows). Rather, it is a gross (cumulative) figure for the number of workers applying to the WRS. The figures are not current: an individual who has registered to work and who leaves employment is not required to de-register, so some of those counted will have left the employment for which they registered and indeed some are likely to have left the UK. Figures for net migration to the UK are published by the Office for National Statistics (ONS). The International Migration Report 2005, published on 2 November 2006, estimates 64,000 more A8 citizens migrated into the UK for at least a year than left in 2005. This shows an increase of 30% compared with an estimated 49,000 in 2004, which is partly explained by the fact that the 2005 estimate covered the first full calendar year following accession in May 2004. For further information, please click on the following link.

<http://www.statistics.gov.uk/CCI/nugget.asp?ID=260&Pos=3&ColRank=2&Rank=448>

### Technical Notes

- All WRS figures (other than percentages) are rounded to the nearest five.
- † indicates 1 or 2
- - indicates nil.

## Accession Monitoring Report, May 2004 – September 2006

- Because of rounding, figures may not sum to the totals shown. All percentages are calculated from non-rounded figures.
- Since accession took place on 1 May 2004, the data quoted for 2004 are only for the part year from May to December, so care should be taken when comparing this with subsequent periods.

### Links to useful websites

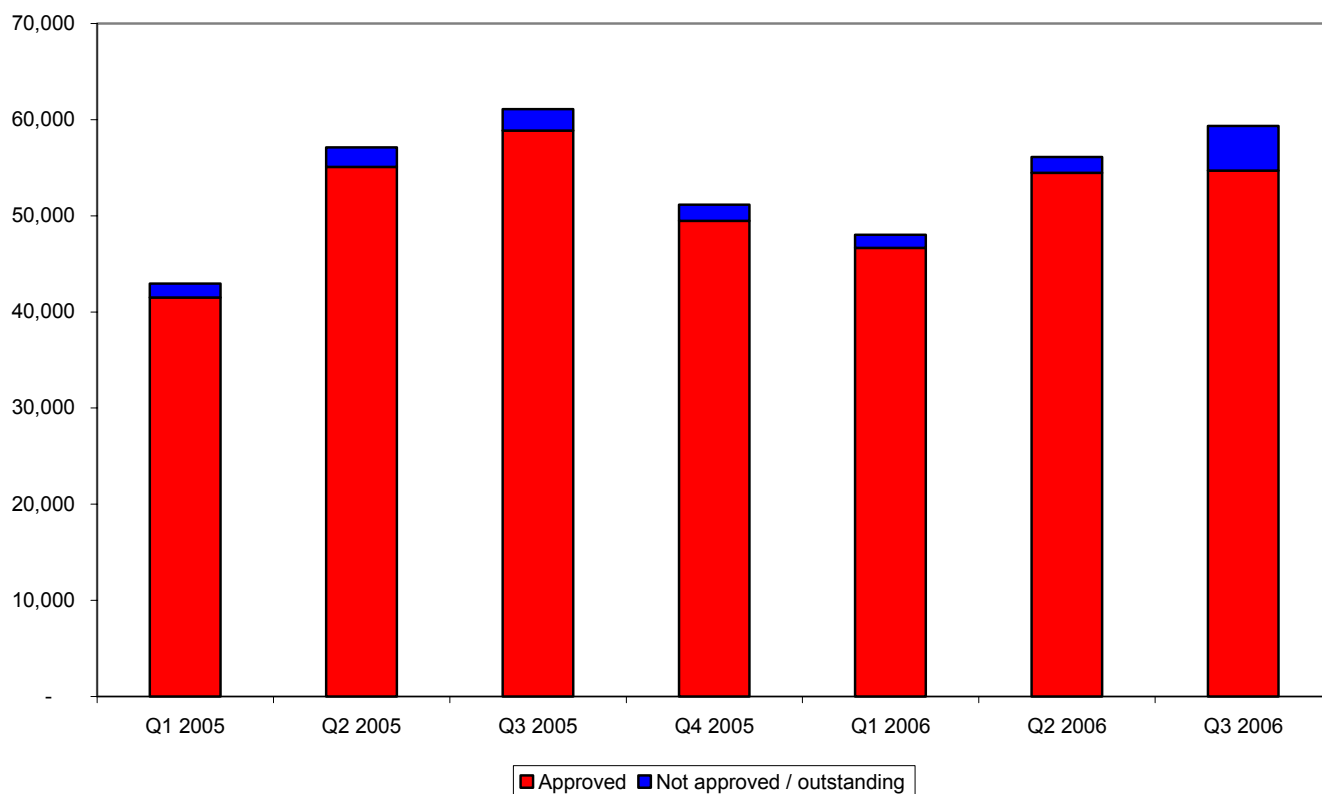
- Working in the UK, information about WRS:  
[www.workingintheuk.gov.uk](http://www.workingintheuk.gov.uk)
- Link to the Worker Registration Form and guidance:  
[http://www.workingintheuk.gov.uk/working\\_in\\_the\\_uk/en/documents/all\\_forms.Maincontent.0117.file.tmp/WRS%2019%20June%2006%20v0.7.doc](http://www.workingintheuk.gov.uk/working_in_the_uk/en/documents/all_forms.Maincontent.0117.file.tmp/WRS%2019%20June%2006%20v0.7.doc)
- Fresh Talent: Working in Scotland Scheme:  
[http://www.scotlandistheplace.com/stitp/sitp\\_display\\_noflash.jsp?pContentID=276&p\\_applic=CCC&pElementID=165&pMenuID=3&p\\_service=Content.show&](http://www.scotlandistheplace.com/stitp/sitp_display_noflash.jsp?pContentID=276&p_applic=CCC&pElementID=165&pMenuID=3&p_service=Content.show&)
- HM Revenue & Customs (HMRC) Right To Reside In The United Kingdom:  
<http://www.hmrc.gov.uk/manuals/tctmanual/TCTM02001.htm>  
<http://www.hmrc.gov.uk/taxcredits/residence-rules.htm>
- Department for Communities and Local Government (DCLG):  
<http://www.communities.gov.uk/index.asp?id=1156294>
- Department for Work and Pensions (DWP) – The impact of free movement of workers from Central and Eastern Europe on the UK labour market:  
<http://www.dwp.gov.uk/asd/asd5/wp29.pdf>
- DWP – National Insurance Number Allocations to Overseas Nationals Entering the UK 2006:  
[http://www.dwp.gov.uk/asd/asd1/niall/nino\\_allocation.asp](http://www.dwp.gov.uk/asd/asd1/niall/nino_allocation.asp)
- Accession Monitoring Report:  
[http://www.ind.homeoffice.gov.uk/aboutus/reports/accession\\_monitoring\\_report](http://www.ind.homeoffice.gov.uk/aboutus/reports/accession_monitoring_report)
- The European Community Association Agreements Statistics for Bulgaria, Romania and Turkey:  
<http://www.ind.homeoffice.gov.uk/aboutus/reports/eeas>
- Home Office – Research, Development and Statistics report on Employers' use of migrant labour:  
<http://www.homeoffice.gov.uk/rds/pdfs06/rdsolr0406.pdf>
- The Office for National Statistics (ONS):  
<http://www.statistics.gov.uk/>
- ONS's statistics on International Migration (MN Series):  
<http://www.statistics.gov.uk/statbase/Product.asp?vlnk=507&More=N>
- ONS's International Passenger Survey Travel Trends (annual data on travel to/from the UK):  
<http://www.statistics.gov.uk/StatBase/Product.asp?vlnk=1391&Pos=&ColRank=1&Rank=272>; and  
Visits to the UK from the enlarged EU (monthly data on EU travel to the UK):  
<http://www.statistics.gov.uk/statbase/Product.asp?vlnk=1222>

## WORKER REGISTRATION SCHEME (WRS)

### Applicants and Applications to the WRS

#### 1. Applicants

Chart 1 Applicants applied by quarter, January 2005 - September 2006



This chart excludes applications made in 2004.

- A cumulative total of 510,000 applicants have registered on the Worker Registration Scheme (WRS) between 1 May 2004 and 30 September 2006, but this does not indicate the number of long term migrants of A8 workers into the UK, as most come for only short periods.
- In total there were 59,000 applicants in Q3 2006, of whom 55,000 (92%) were issued with Worker Registration certificates and cards, compared to 56,000 and 54,000 (97%) in Q2 2006 and 61,000 and 59,000 (96%) in Q3 2005.
- Applications have consistently fluctuated between highs of around 22,000 per month in June and July to lows of about half that number in December.
- The total applications for July to September 2006 of 22,000, 20,000, and 17,000, were slightly lower than in the same months in 2005, and easing from the summer's highs.

## Accession Monitoring Report, May 2004 – September 2006

**Table 1 Applicants by quarter applied, May 2004 - September 2006**

Number of applicants						
Period	Approved	Refused	Exempt	Withdrawn	Outstanding	Total
<b>2004 Total</b>	<b>125,875</b>	<b>1,250</b>	<b>640</b>	<b>6,780</b>	-	<b>134,545</b>
<b>2005</b>						
Q1	41,495	480	120	870	-	<b>42,965</b>
Q2	55,100	565	85	1,350	10	<b>57,110</b>
Q3	58,865	410	70	1,720	10	<b>61,075</b>
Q4	49,470	330	35	1,300	10	<b>51,145</b>
<b>2005 Total</b>	<b>204,930</b>	<b>1,785</b>	<b>310</b>	<b>5,240</b>	<b>30</b>	<b>212,295</b>
<b>2006</b>						
Q1	46,660	320	30	975	30	<b>48,015</b>
Q2	54,485	280	35	1,155	165	<b>56,120</b>
Q3	54,710	260	20	800	3,575	<b>59,365</b>

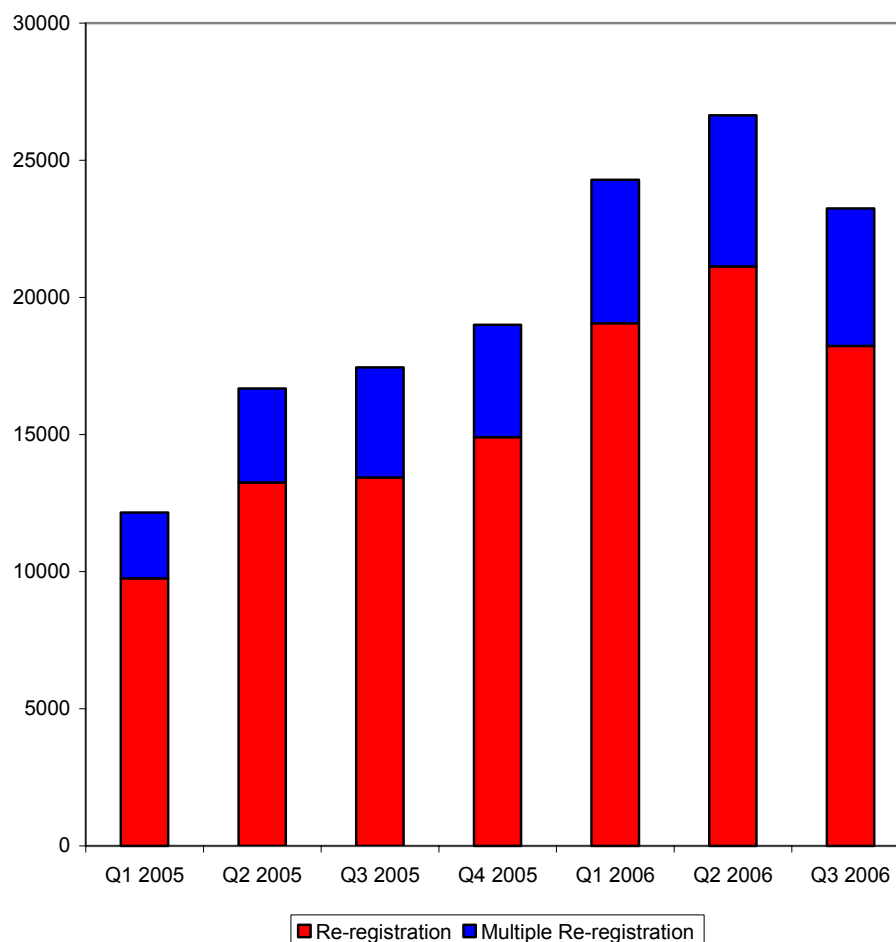
This table shows applicants rather than the number of applications made. The figures are for initial applications only (and do not include the 4,355 multiple applications, where an individual is doing more than one job simultaneously, or the 153,435 total re-registrations, where an individual has changed employers).

The total shown for 2004 is for the part year May to December.

*Note: Please see Introduction: Technical Note on WRS data.*

### 1.a. Applications

**Chart 2 Total re-registrations by quarter (January 2005 - September 2006)**



Data for the part year May to December 2004 is not shown in the above chart.

- A total of 79,000 applications, excluding outstanding applications, were made in Q3 2006, of which 78,000 (98%) were approved (i.e. the worker's employment was registered), compared to 83,000 and 81,000 (98%) in Q2 2006 and 79,000 and 76,000 (97%) in Q3 2005.
- The total since May 2004 includes 120,000 applications to re-register (from those who have previously registered but have changed employer), 4,000 multiple registrations (from those working for more than one employer simultaneously), and 34,000 multiple re-registrations (from those registering for subsequent, additional jobs, or those who have left their employer and are re-registering for more than one job). These applications account for the difference between the number of applicants and the number of applications.
- Over the reporting period, the number of re-registrations was 18,000 in Q3 2006 compared to a high of 21,000 in Q2 2006 and 13,000 in Q3 2005.

Accession Monitoring Report, May 2004 – September 2006

**Table 1.a. Total Re-registrations, May 2004 - September 2006**

Number of applications

Period	Re-registration	Multiple Re-registration	TOTAL
<b>2004 Total</b>	<b>10,130</b>	<b>3,855</b>	<b>13,985</b>
<b>2005</b>			
Q1	9,760	2,395	<b>12,155</b>
Q2	13,250	3,430	<b>16,680</b>
Q3	13,430	4,015	<b>17,450</b>
Q4	14,905	4,100	<b>19,000</b>
<b>2005 Total</b>	<b>51,345</b>	<b>13,940</b>	<b>65,285</b>
<b>2006</b>			
Q1	19,060	5,225	<b>24,285</b>
Q2	21,125	5,515	<b>26,635</b>
Q3	18,235	5,010	<b>23,245</b>

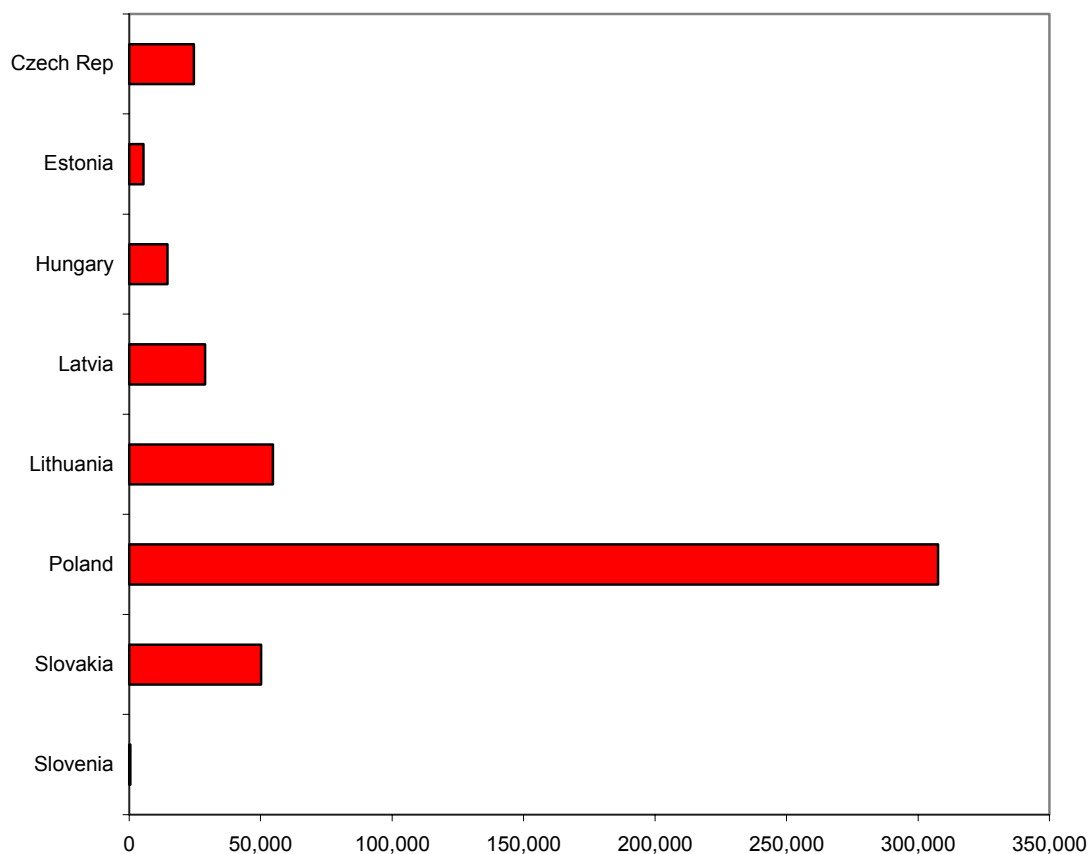
*Note: Please see Introduction: Technical Note on WRS data*

The total shown for 2004 is for the part year May to December.

**Applicant Profile**

**2. Nationality of applicants**

**Chart 2 Nationality of applicants, May 2004 - September 2006**



- In the period 1 May 2004 to 30 September 2006, the highest proportion of applicants were Polish (63% of the total), followed by Lithuanian (11%) and Slovak (10%) applicants.
- Although the total number of applicants for Q3 2006 is similar to Q2 2006 at about 55,000, it is lower than the 59,000 in Q3 2005. The percentage of Polish nationals in Q3 2006 reached a high of 72% compared to 69% in Q2 2006, 65% in Q3 2005, and 56% in Q3 2004.

Accession Monitoring Report, May 2004 – September 2006

**Table 2 Nationality of applicants approved by quarter applied, May 2004 - September 2006**

Period	Number of applicants								
	Czech Rep	Estonia	Hungary	Latvia	Lithuania	Poland	Slovakia	Slovenia	TOTAL
<b>2004 Total</b>	<b>8,255</b>	<b>1,860</b>	<b>3,620</b>	<b>8,670</b>	<b>19,270</b>	<b>71,020</b>	<b>13,020</b>	<b>155</b>	<b>125,875</b>
<b>2005</b>									
Q1	2,720	710	1,430	3,030	5,540	23,205	4,805	50	<b>41,495</b>
Q2	2,715	720	1,585	4,165	7,230	32,850	5,805	30	<b>55,100</b>
Q3	2,860	600	1,670	3,290	5,720	38,310	6,375	35	<b>58,865</b>
Q4	2,270	530	1,670	2,470	4,490	32,945	5,045	55	<b>49,470</b>
<b>2005 Total</b>	<b>10,565</b>	<b>2,560</b>	<b>6,355</b>	<b>12,955</b>	<b>22,980</b>	<b>127,310</b>	<b>22,030</b>	<b>170</b>	<b>204,930</b>
<b>2006</b>									
Q1	1,860	390	1,430	2,555	4,220	31,850	4,295	55	<b>46,660</b>
Q2	2,030	340	1,580	2,765	4,440	37,845	5,455	40	<b>54,485</b>
Q3	1,955	340	1,620	1,960	3,735	39,645	5,425	35	<b>54,710</b>
Q3 as % of total Q3 2006	4%	1%	3%	4%	7%	72%	10%	<0.5%	100%

This table shows applicants approved rather than the total number of applications made. The figures are for initial applications only (not multiple applications, where an individual is doing more than one job simultaneously, or re-registrations, where an individual has changed employers).

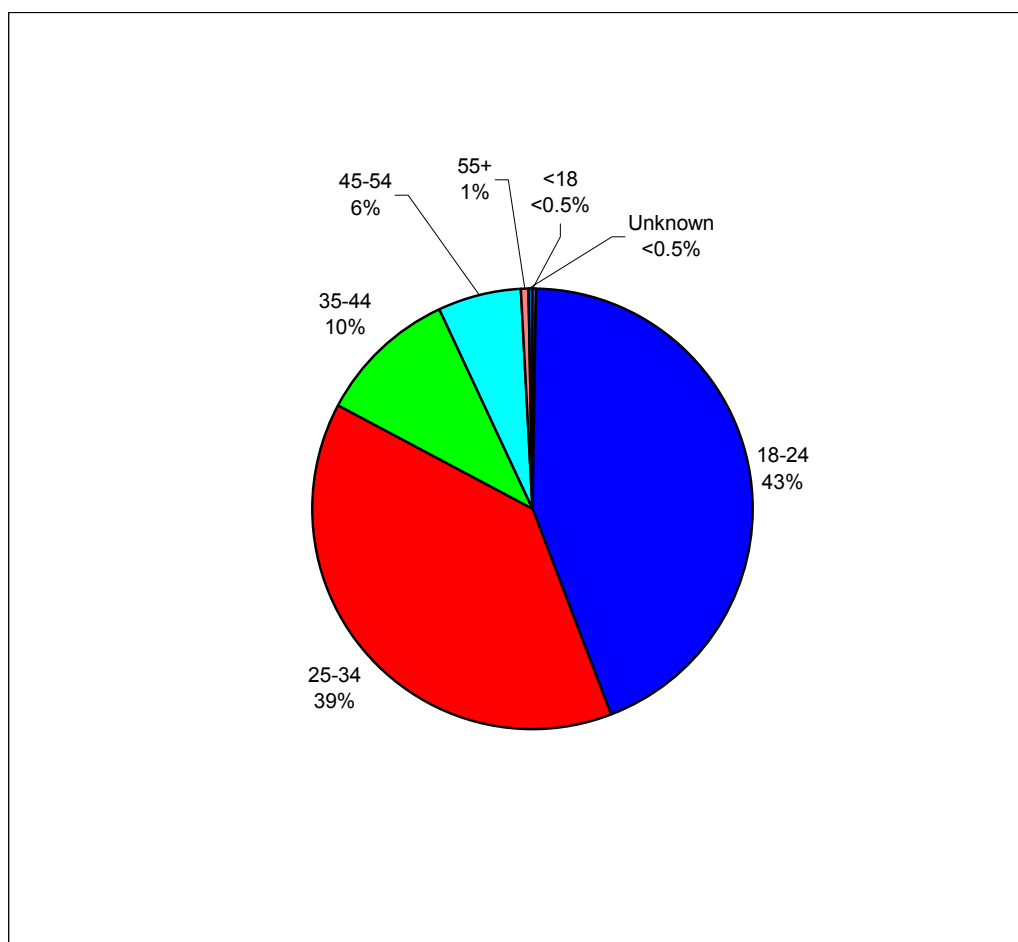
The total shown for 2004 is for the part year May to December.

*Note: Please see Introduction: Technical Note on WRS data.*

**Profile of Registered Workers**

**3. Age and Gender of registered workers**

**Chart 3 Age of registered workers, May 2004 - September 2006**



- Of those who applied between May 2004 and September 2006, 82% of registered workers were aged 18 – 34. This percentage increased to 84% in both Q3 2005 and Q3 2006 with over 50% in the younger 18-24 age bracket.

## Accession Monitoring Report, May 2004 – September 2006

**Table 3 Age of registered workers, May 2004 - September 2006**

Age	Number of registered workers								
	2004	2005				2005	2006		
		Q1	Q2	Q3	Q4	Total	Q1	Q2	Q3
<18	<b>320</b>	100	185	245	130	<b>660</b>	110	175	275
18-24	<b>54,350</b>	15,940	23,245	29,805	20,815	<b>89,805</b>	18,320	23,165	27,760
25-34	<b>49,830</b>	17,285	21,740	19,740	19,515	<b>78,280</b>	19,475	21,630	18,635
35-44	<b>12,655</b>	4,950	6,025	5,465	5,320	<b>21,760</b>	5,190	5,605	4,845
45-54	<b>7,425</b>	2,795	3,415	3,155	3,205	<b>12,570</b>	3,075	3,395	2,740
55-64	<b>1,020</b>	355	405	380	420	<b>1,560</b>	420	440	365
65+	<b>20</b>	10	5	5	5	<b>25</b>	10	5	5
Others	<b>260</b>	65	85	75	60	<b>285</b>	65	75	85
<b>Total</b>	<b>125,875</b>	<b>41,495</b>	<b>55,100</b>	<b>58,865</b>	<b>49,470</b>	<b>204,930</b>	<b>46,660</b>	<b>54,485</b>	<b>54,710</b>

This table shows registered workers rather than the number of applications made. The figures are for initial applications only (not multiple applications, where an individual is doing more than one job simultaneously, nor re-registrations, where an individual has changed employers).

The total shown for 2004 is for the part year May to December.

*Note: Please see Introduction: Technical Note on WRS data.*

- The male:female ratio for those who applied between May 2004 and September 2006 was 58:42. However, this proportion has varied from a ratio of 53:47 in the first quarter after accession to 56:44 in Q3 2006.

#### 4. Dependants of registered workers<sup>1</sup>

- A small minority (7%) of registered workers who applied between May 2004 and September 2006 declared that they had dependants living with them in the UK when they applied. Amongst those who did have dependants, the average number of dependants was 1.3.
- The number of dependants as a proportion of the number of registered workers has increased from 8% in the part year 2004 to 12% in Q3 2006, with an average of 9% over the period.

**Table 4 Registered workers' dependants, May 2004 - September 2006**

Period	Total registered workers	Registered workers with dependants	Number of dependants		
			Under 17	17 and over	TOTAL
<b>2004 Total</b>	<b>125,875</b>	<b>6,645</b>	<b>4,455</b>	<b>6,075</b>	<b>10,525</b>
<b>2005</b>					
Q1	41,495	2,420	1,610	1,490	<b>3,095</b>
Q2	55,100	2,975	1,980	1,885	<b>3,865</b>
Q3	58,865	3,465	2,370	2,095	<b>4,465</b>
Q4	49,470	3,785	2,550	2,305	<b>4,855</b>
<b>2005 Total</b>	<b>204,930</b>	<b>12,645</b>	<b>8,510</b>	<b>7,775</b>	<b>16,280</b>
<b>2006</b>					
Q1	46,660	4,385	3,050	2,520	<b>5,570</b>
Q2	54,485	4,925	3,470	2,795	<b>6,265</b>
Q3	54,710	5,380	3,770	3,015	<b>6,785</b>

This table shows registered workers rather than the number of applications made. The figures are for initial applications only (not multiple applications, where an individual is doing more than one job simultaneously, or re-registrations, where an individual has changed employers).

The total shown for 2004 is for the part year May to December.

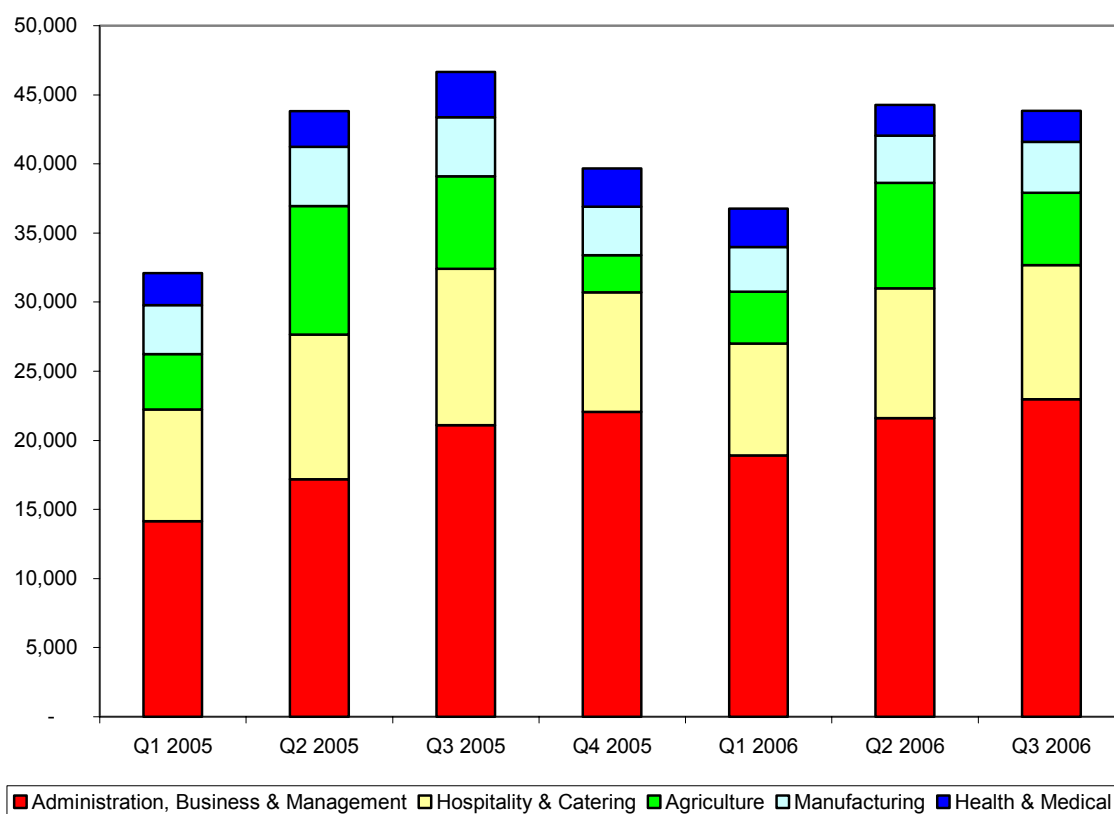
*Note: it is likely that there is some 'double counting' of dependants, in the sense that some of those recorded as dependants (particularly older children and spouses) may also have registered in their own right to work in the UK.*

*Note: Please see Introduction: Technical Note on WRS data.*

<sup>1</sup> These data are derived from applicants' responses to the question on the WRS application form: "If your dependants (children and/or spouse or partner) are living with you in the UK, how many of them are: Aged 16 or under? and Aged 17 or above? The Home Office does not verify these responses.

## 5. Occupation groups in which registered workers are employed

**Chart 4 Top 5 occupation groups in which registered workers are employed, by quarter applied, January 2005 - June 2006**



The total shown for 2004 is for the part year May to December.

- The top five occupation groups, for registered workers who applied between May 2004 to September 2006, were Administration, Business & Management<sup>2</sup> (35%), Hospitality & Catering (21%), Agriculture (12%), Manufacturing (7%) and Food, Fish and Meat processing (5%).
- Administration, Business & Management has overtaken Hospitality & Catering as the group that employs the most A8 workers since May 2004. The proportion of workers in the Administration, Business & Management group increased from 17% in Q2 2004 to 42% in the latest quarter. Meanwhile, the proportion in Hospitality and Catering fell from 31% in Q2 2004 to 18% in Q3 2006.
- Agriculture is the other group where there has been a considerable change over the period, reflecting the seasonal nature of the work. The proportion of workers who were employed in Agriculture peaked in the summer months making up 17% in Q2 2005, and was lowest during the winter months with only 5% in Q4 2005, but up to 14% in the latest summer quarter.

<sup>2</sup> The majority of workers in the Administration, Business & Management occupation group work for recruitment agencies and could be employed in a variety of occupations. For a full list of occupations please see Annex A of the report.

Accession Monitoring Report, May 2004 – September 2006

**Table 5 Occupation groups in which registered workers are employed, by quarter applied, May 2004 - September 2006**

Number of registered workers

Occupation group	2004	2005				2005	2006			TOTAL May 2004 to Sept 2006
	Total	Q1	Q2	Q3	Q4	Total	Q1	Q2	Q3	
Administration, Business & Management	31,235	14,160	17,180	21,085	22,050	<b>74,475</b>	18,915	21,605	22,905	<b>169,125</b>
Hospitality & Catering	34,310	8,085	10,480	11,320	8,650	<b>38,535</b>	8,085	9,395	9,695	<b>100,025</b>
Agriculture	16,905	4,000	9,295	6,695	2,710	<b>22,700</b>	3,755	7,630	5,240	<b>56,230</b>
Manufacturing Food/Fish/Meat Processing	9,750	3,550	4,285	4,265	3,505	<b>15,605</b>	3,225	3,410	3,680	<b>35,670</b>
Health & Medical	6,480	2,215	2,820	2,950	2,620	<b>10,605</b>	2,240	2,275	2,660	<b>24,255</b>
Health & Medical	5,550	2,305	2,585	3,295	2,750	<b>10,935</b>	2,795	2,225	2,250	<b>23,755</b>
Retail	5,355	1,815	2,125	2,535	2,285	<b>8,760</b>	1,970	2,105	2,455	<b>20,640</b>
Construction & Land	5,185	1,610	1,910	2,095	1,640	<b>7,255</b>	2,145	2,245	2,090	<b>18,925</b>
Transport Entertainment & Leisure	2,725	1,505	1,890	1,830	1,470	<b>6,695</b>	1,420	1,385	1,215	<b>13,445</b>
Education & Cultural Real Estate & Property	2,190	890	1,195	1,135	450	<b>3,670</b>	615	905	975	<b>8,360</b>
Education & Cultural Real Estate & Property	1,490	445	480	510	490	<b>1,925</b>	590	395	450	<b>4,850</b>
Financial Services	535	240	240	255	195	<b>930</b>	210	205	240	<b>2,115</b>
Financial Services	425	115	110	135	95	<b>455</b>	140	150	205	<b>1,375</b>
Security & Protection	345	100	110	195	145	<b>550</b>	120	125	130	<b>1,270</b>
Computer Services	385	100	95	125	100	<b>420</b>	150	105	130	<b>1,190</b>
Extraction Industries	365	85	110	125	120	<b>440</b>	105	140	135	<b>1,190</b>
Telecommunications Utilities (Gas, Electricity, Water)	180	80	30	45	30	<b>185</b>	40	35	65	<b>500</b>
Telecommunications Utilities (Gas, Electricity, Water)	125	35	35	50	35	<b>155</b>	40	50	55	<b>430</b>
Sporting Activities	145	40	15	35	30	<b>120</b>	30	30	25	<b>355</b>
Government	80	25	30	40	35	<b>130</b>	25	30	30	<b>285</b>
Law-related Services	85	20	15	20	20	<b>75</b>	10	15	20	<b>210</b>
Not Stated	2,030	85	80	115	50	<b>330</b>	30	25	50	<b>2,465</b>
<b>Total</b>	<b>125,875</b>	<b>41,495</b>	<b>55,100</b>	<b>58,865</b>	<b>49,470</b>	<b>204,930</b>	<b>46,660</b>	<b>54,485</b>	<b>54,710</b>	<b>486,660</b>

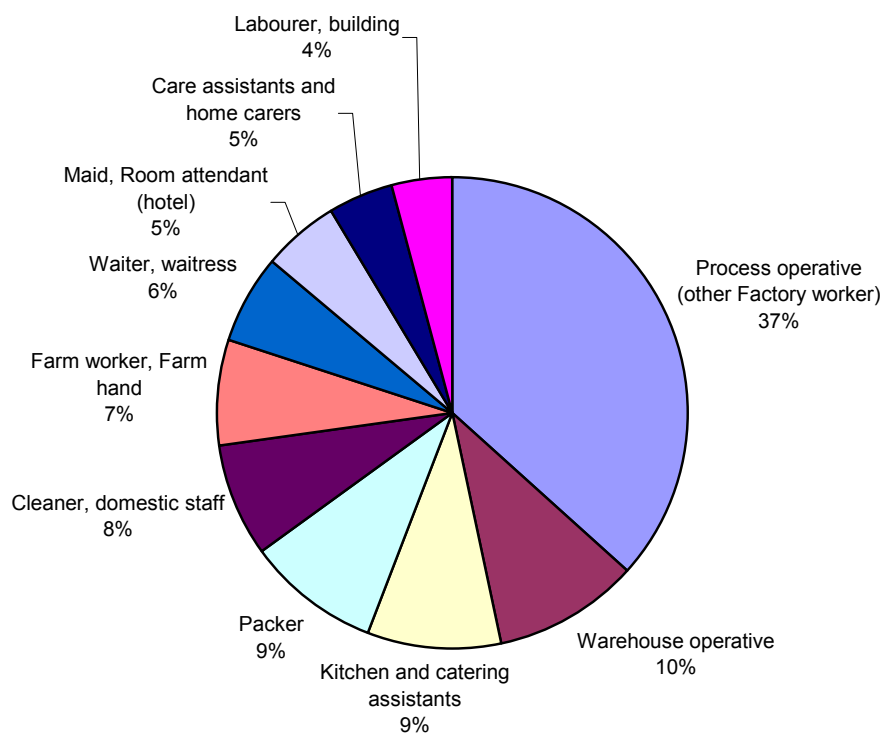
This table shows registered workers rather than the number of applications made. The figures are for initial applications only (not multiple applications, where an individual is doing more than one job simultaneously, or re-registrations, where an individual has changed employers). The total shown for 2004 is for the part year May to December.

Please note that we have renamed the areas where people are working as 'occupation groups' rather than 'sectors', since the latter term does not conform to the National Statistics definition of Standard Industry Codes. These, together with our listing of occupations, which are not the same as the National Statistics Standard Occupational Codes, are currently being reviewed with the aim of the early implementation of recognised standard terminology.

*Note: Please see Introduction: Technical Note on WRS data.*

6. Occupations in which registered workers are employed

Chart 5 Top 10 occupations in which registered workers are employed, July 2004 - September 2006, (May/June 2004 data not available)



---

*Note: Percentages indicate percentage of all workers registered, July 2004 to June 2006*

- The top 20 occupations have remained largely consistent over the period.
- The biggest group of workers in the top 10 occupations (37%) is in general occupations classified as Process operatives (other factory worker). This is followed by Warehouse Operatives (10%) and Kitchen and catering assistants (9%).
- Please refer to **Annex A** for a full table of occupations of registered workers who applied between July 2004 and September 2006.

Accession Monitoring Report, May 2004 – September 2006

**Table 6 Top 20 occupations in which registered workers are employed, by quarter applied, July 2004 - September 2006**

Occupation	Number of registered workers									
	2004	2005				2005	2006			TOTAL May 2004 to Sept 2006
	Total	Q1	Q2	Q3	Q4	Total	Q1	Q2	Q3	
Process operative (other Factory worker)	<b>17,970</b>	10,000	13,100	14,975	15,180	<b>53,255</b>	12,450	13,830	14,450	<b>111,955</b>
Warehouse Operative	<b>3,810</b>	2,440	2,565	4,100	4,750	<b>13,855</b>	3,650	4,365	5,375	<b>31,050</b>
Kitchen and catering assistants	<b>5,940</b>	2,465	3,495	3,580	2,870	<b>12,410</b>	2,685	3,215	3,160	<b>27,410</b>
Packer	<b>5,515</b>	3,045	3,270	3,720	3,335	<b>13,370</b>	2,620	2,910	2,930	<b>27,350</b>
Cleaner, domestic staff	<b>4,355</b>	2,135	2,470	3,025	2,565	<b>10,195</b>	3,145	2,905	2,990	<b>23,595</b>
Farm worker/ Farm hand	<b>3,350</b>	1,705	4,170	2,420	1,030	<b>9,325</b>	1,915	3,845	2,575	<b>21,010</b>
Waiter, waitress	<b>4,980</b>	1,705	2,030	2,255	1,670	<b>7,660</b>	1,525	1,755	1,845	<b>17,765</b>
Maid / Room attendant (hotel)	<b>3,375</b>	1,305	1,910	2,140	1,705	<b>7,060</b>	1,665	1,850	1,820	<b>15,765</b>
Care assistants and home carers	<b>2,580</b>	1,385	1,590	2,075	1,835	<b>6,885</b>	1,765	1,470	1,395	<b>14,090</b>
Labourer, building	<b>2,080</b>	1,140	1,445	1,550	1,145	<b>5,280</b>	1,500	1,785	1,580	<b>12,225</b>
Sales and retail assistants	<b>2,535</b>	1,105	1,400	1,615	1,285	<b>5,405</b>	1,245	1,410	1,600	<b>12,195</b>
Crop harvester	<b>1,235</b>	610	2,205	1,655	275	<b>4,745</b>	450	1,820	1,135	<b>9,390</b>
Food processing operative (fruit / veg)	<b>1,600</b>	705	1,010	895	760	<b>3,370</b>	640	750	735	<b>7,095</b>
Bar staff	<b>1,950</b>	665	810	890	610	<b>2,975</b>	550	585	665	<b>6,720</b>
Food processing operative (meat)	<b>1,525</b>	565	675	655	660	<b>2,555</b>	485	530	670	<b>5,760</b>
Chef, other	<b>1,380</b>	545	625	690	535	<b>2,395</b>	495	605	530	<b>5,410</b>
Fruit picker (farming)	<b>545</b>	125	1,170	855	155	<b>2,305</b>	140	705	560	<b>4,255</b>
Administrator, general	<b>1,000</b>	400	465	480	435	<b>1,780</b>	395	475	550	<b>4,200</b>
Driver, HGV (Heavy Goods Vehicle)	<b>730</b>	570	635	555	460	<b>2,220</b>	350	350	340	<b>3,990</b>
Driver, delivery van	<b>580</b>	340	410	420	355	<b>1,525</b>	320	280	300	<b>3,005</b>
<b>Total Top 20</b>	<b>67,030</b>	<b>32,955</b>	<b>45,445</b>	<b>48,555</b>	<b>41,610</b>	<b>168,565</b>	<b>37,995</b>	<b>45,445</b>	<b>45,210</b>	<b>364,240</b>
Not Stated	20,015	8,540	9,660	10,310	7,860	36,370	8,665	9,040	9,500	83,590

This table shows registered workers rather than the number of applications made. The figures are for initial applications only (not multiple applications, where an individual is doing more than one job simultaneously, nor re-registrations, where an individual has changed employers).

The total shown for 2004 is for the part year May to December.

*Note: Please see Introduction: Technical Note on WRS data*

#### **7. Registered workers' hours of work<sup>3</sup> and wages<sup>4</sup>**

- 97% of registered workers who applied between May 2004 and September 2006 were working full time (more than 16 hours a week).<sup>5</sup>
- The majority (78%) of registered workers were earning £4.50 - £5.99 per hour.

#### **8. Proportion of registered workers in temporary/permanent employment<sup>6</sup>**

- For those who applied in the period from May 2004 to September 2006, 49% of registered workers were in temporary employment and 48% were in permanent employment (3% did not provide this information).
- The proportion of registered workers employed on a temporary or permanent basis varied considerably from occupation group to group. In Agriculture, 69% were in temporary employment and 27% in permanent employment. In Hospitality and Catering the pattern was reversed, with only 20% in temporary employment and 77% in permanent employment.

#### **9. Intended Length of Stay**

The following information is taken from details on the WRS application forms on the applicant's intended length of stay in the UK from May 2004 to 30 September 2006. 59% answered this question.

- 190,000 (41%) left this part blank or answered "do not know".
- 207,000 (45%) ticked "less than 3 months".
- 7,000 (2%) ticked "3 to 5 months".
- 13,000 (3%) ticked "6 to 11 months".
- 17,000 (4%) ticked "1 to 2 years".
- 29,000 (6%) ticked "more than 2 years".

Extra care should be taken when using the above data as the applicants' situation may change significantly from the time when the application form is completed, which may affect their continued stay in the UK.

The data given above are derived from provisional management information and subject to change.

---

<sup>3</sup> These data are derived from applicants' responses to the question on the WRS application form: How many hours per week do you normally work? The Home Office does not verify these responses.

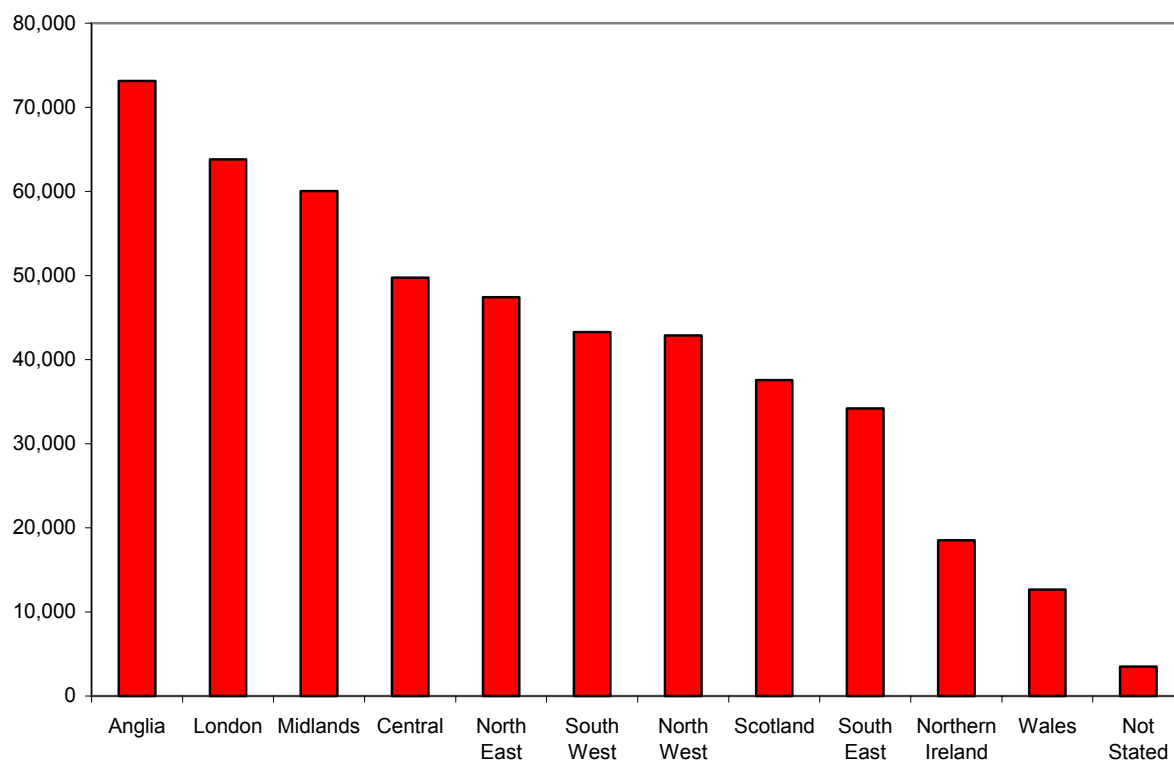
<sup>4</sup> These data are derived from applicants' responses to the question on the WRS application form: How much is your hourly rate, before deductions? The Home Office does not verify these responses.

<sup>5</sup> The 97% is likely to be an underestimate. The proportion of registered workers working part time is likely to be lower than 3%, because some were doing more than one part time job, simultaneously. The data published here only takes account of one of those jobs – so the total hours an individual was working will in some cases be more than 16.

<sup>6</sup> These data are derived from applicants' responses to the question on the WRS application form: What type of employment are you undertaking? (Please indicate by ticking the appropriate box). The Home Office does not verify these responses.

## 10. Geographical distribution of registered workers<sup>7</sup>

Chart 6 Geographical distribution of registered workers, May 2004 - September 2006



- Anglia has had the greatest number of workers registering during the May 2004 to September 2006 period with 15% of the total. This is followed by London and the Midlands Regions with 14% and 12%.
- Northern Ireland and Wales had the fewest registrations with 4% and 3% of the total.
- The proportion applying to London, however, fell from 25% in Q2 2004 to just 9% in Q3 2006. At the same time the proportion and number applying elsewhere has increased and in the latest quarter the highest proportion of workers was in the Anglia region.

<sup>7</sup> Regions are based on the applicant's employer's postcode, where supplied. Regions are defined according to the Post Office's Postal Address Book regions.

Accession Monitoring Report, May 2004 – September 2006

**Table 7 Geographical distribution of registered workers, May 2004 - September 2006**

Number of registered workers

Area	2004	2005				2005	2006			TOTAL May 2004 to Sept 2006
	Total	Q1	Q2	Q3	Q4	Total	Q1	Q2	Q3	
Anglia	<b>21,915</b>	6,115	8,485	8,430	6,890	<b>29,920</b>	6,410	7,355	7,435	<b>73,035</b>
London	<b>25,470</b>	6,095	6,075	5,935	5,350	<b>23,455</b>	5,080	4,905	4,885	<b>63,795</b>
Midlands	<b>11,710</b>	5,645	6,845	7,065	7,195	<b>26,750</b>	6,305	7,440	7,805	<b>60,010</b>
Central	<b>13,885</b>	4,530	5,555	5,935	4,615	<b>20,635</b>	4,970	5,355	4,895	<b>49,740</b>
North East	<b>9,060</b>	3,890	4,900	6,620	5,990	<b>21,400</b>	5,270	5,585	6,105	<b>47,420</b>
South West	<b>9,700</b>	3,560	5,465	5,375	3,750	<b>18,150</b>	3,990	5,975	5,460	<b>43,275</b>
North West	<b>7,670</b>	3,350	4,900	5,870	5,010	<b>19,130</b>	4,710	5,440	5,930	<b>42,880</b>
Scotland	<b>8,150</b>	2,285	4,545	5,285	3,775	<b>15,890</b>	3,475	5,055	5,000	<b>37,570</b>
South East	<b>11,200</b>	2,720	3,975	4,010	2,965	<b>13,670</b>	2,775	3,320	3,250	<b>34,215</b>
Northern Ireland	<b>3,660</b>	1,840	2,460	2,325	2,220	<b>8,845</b>	2,030	2,080	1,915	<b>18,530</b>
Wales	<b>2,430</b>	1,120	1,410	1,560	1,400	<b>5,490</b>	1,410	1,640	1,700	<b>12,670</b>
Not Stated	<b>1,025</b>	345	485	455	310	<b>1,595</b>	230	340	330	<b>3,520</b>
<b>Total</b>	<b>125,875</b>	<b>41,495</b>	<b>55,100</b>	<b>58,865</b>	<b>49,470</b>	<b>204,930</b>	<b>46,660</b>	<b>54,485</b>	<b>54,710</b>	<b>486,660</b>

This table shows registered workers rather than the number of applications made. The figures are for initial applications only (not multiple applications, where an individual is doing more than one job simultaneously, or re-registrations, where an individual has changed employers).

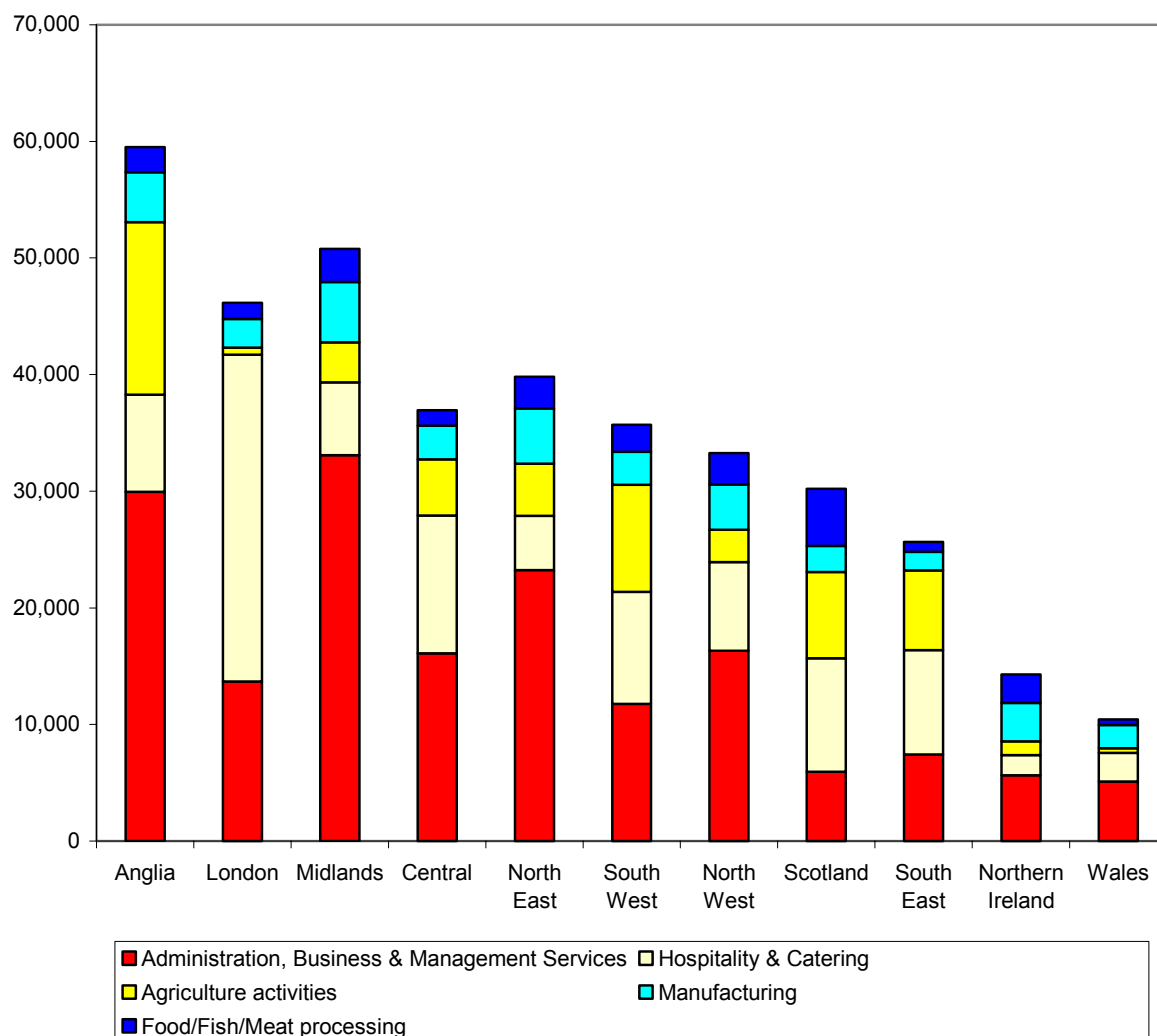
The total shown for 2004 is for the part year May to December.

Please note that changes have been made to the way that regional information is recorded by refining the linkage to postcode information to ensure greater accuracy. This has resulted in changes in the data shown under some regions and 'Not stated' since the second Quarter 2004, but does not change the totals of previously published information.

*Note: Please see Introduction: Technical Note on WRS data.*

## 11. Geographical distribution of registered workers by occupation group<sup>8</sup>

**Chart 7 Top 5 occupation groups – geographical distribution of registered workers. Cumulative total, May 2004 - June 2006**



### Trends within occupation groups

- 28% of those working in Hospitality and Catering were in London – far more than in any other region. The next highest proportions were working in Central England and Scotland (12% and 10% respectively).
- 26% of those working in Agriculture were in Anglia, followed by the South West (16%), whereas only 1% of Agriculture workers were in London.
- 20% of those working in Administration, Business and Management were in the Midlands, followed by 18% in Anglia and 14% in the North East.

<sup>8</sup> Regions are based on the applicant's employer's postcode, where supplied. Regions are defined according to the Post Office's Postal Address Book regions.

**Trends within regions**

- 44% of those located in London were working in Hospitality and catering compared with 26% of those working in Scotland, but only 11% in Anglia and 9% in Northern Ireland.
- 55% of those located in the Midlands were working in Administration, Business and Management, as were 41% of those in Anglia, but only 22% in the South East and 16% in Scotland.
- 20% of those in Anglia were working in Agriculture, and 21% in the South West and 20% in Scotland.

Accession Monitoring Report, May 2004 – September 2006

**Table 8 Top 10 Occupation groups – geographical distribution of registered workers, Cumulative total, May 2004 - September 2006**

Number of registered workers

Occupation group	Anglia	London	Midlands	Central	North East	South West	North West	Scotland	South East	Northern Ireland	Wales	Unknown*	TOTAL
Admin, Bus & Man Services	29,865	13,685	33,090	16,110	23,245	11,770	16,320	5,925	7,420	5,640	5,120	945	<b>169,130</b>
Hospitality & Catering	8,335	28,015	6,250	11,800	4,645	9,615	7,605	9,755	8,940	1,730	2,440	890	<b>100,025</b>
Agriculture Activities	14,785	615	3,435	4,825	4,475	9,165	2,760	7,380	6,835	1,180	390	390	<b>56,235</b>
Manufacturing	4,295	2,455	5,170	2,885	4,735	2,835	3,895	2,260	1,605	3,300	2,020	225	<b>35,675</b>
Food/ Fish/ Meat Processing	2,145	1,395	2,850	1,325	2,730	2,320	2,690	4,875	860	2,430	465	170	<b>24,255</b>
Health & Medical Services	3,220	2,690	1,750	3,810	2,205	2,450	1,730	1,655	2,535	745	760	195	<b>23,755</b>
Retail & Related Services	3,510	5,040	1,900	2,125	1,260	1,195	1,730	1,020	1,635	665	340	220	<b>20,645</b>
Construction & Land Services	1,720	2,565	1,410	2,500	1,415	1,015	2,190	2,400	1,340	1,920	330	125	<b>18,925</b>
Transport	2,275	1,170	2,130	1,190	1,220	990	1,860	890	920	465	235	115	<b>13,445</b>
Entertainment & Leisure Services	890	1,390	725	1,060	540	985	1,160	435	710	60	325	75	<b>8,360</b>
<b>TOTAL TOP TEN</b>	<b>71,040</b>	<b>59,020</b>	<b>58,700</b>	<b>47,630</b>	<b>46,470</b>	<b>42,340</b>	<b>41,940</b>	<b>36,595</b>	<b>32,800</b>	<b>18,135</b>	<b>12,425</b>	<b>3,350</b>	<b>470,445</b>
Total (others/ unknown)	1,995	4,775	1,310	2,110	950	935	940	975	1,415	395	245	170	<b>16,215</b>
<b>GRAND TOTAL</b>	<b>73,035</b>	<b>63,795</b>	<b>60,010</b>	<b>49,740</b>	<b>47,420</b>	<b>43,275</b>	<b>42,880</b>	<b>37,570</b>	<b>34,215</b>	<b>18,530</b>	<b>12,670</b>	<b>3,520</b>	<b>486,660</b>

This table shows registered workers rather than the number of applications made. The figures are for initial applications only (not multiple applications, where an individual is doing more than one job simultaneously, or re-registrations, where an individual has changed employers).

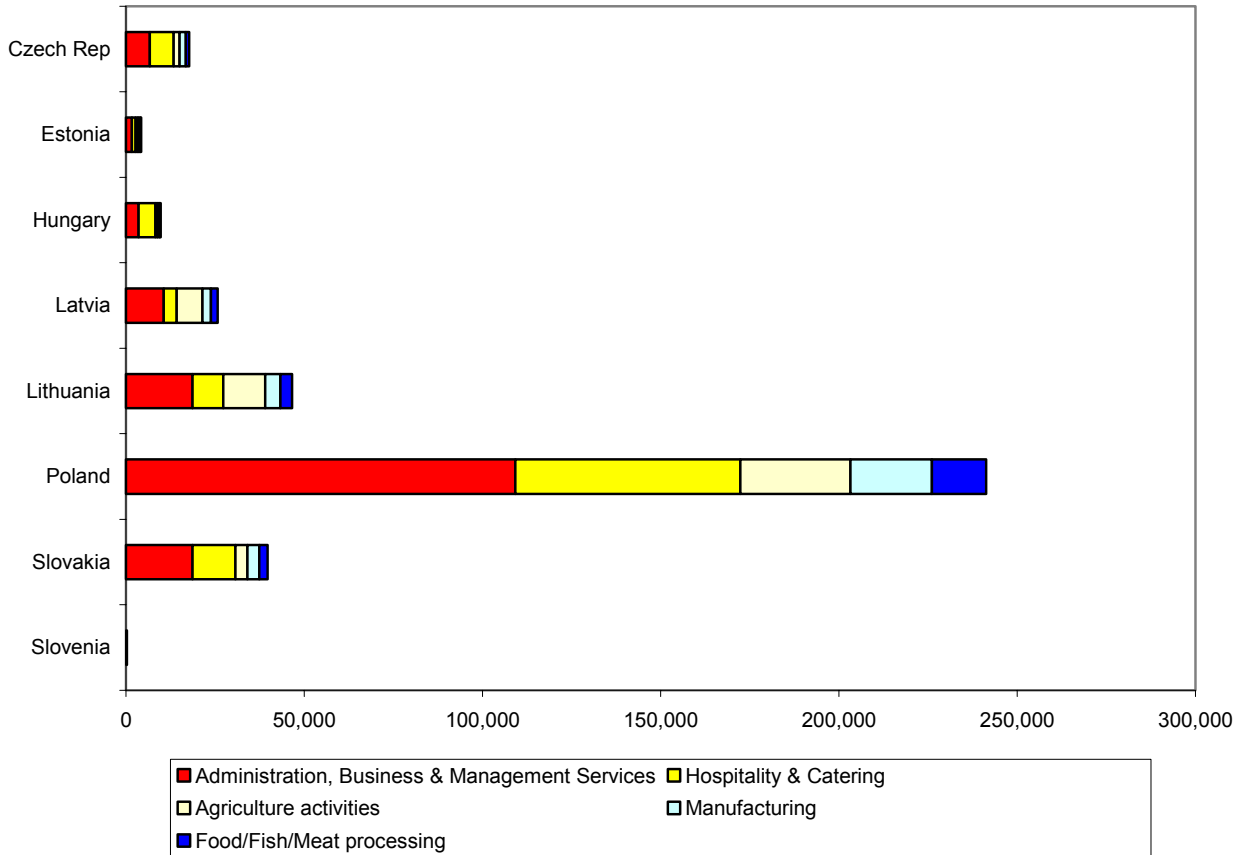
\*Postcode not supplied.

Note: Regions are defined according to the Post Office's Postal Address Book regions. Data are based on employer's postcode, where supplied.

Note: Please see Introduction: Technical Note on WRS data.

12. Nationality of registered workers by occupation group

Chart 8 Top 5 Occupation groups – Nationality of registered workers.  
Cumulative total, May 2004 - June 2006



- Polish workers made up the largest proportion in every occupation group, with 55% in agriculture and 63% in food/fish/meat processing compared to 63% in all groups.
- A greater proportion of workers from Lithuania and Latvia worked in Agriculture than any other nationality. 21% of Lithuanians and 25% of Latvians worked in Agriculture compared to 12% of all workers.

**Table 9 Top 10 Occupation groups – Nationality of registered workers.  
Cumulative total, May 2004 - September 2006**

Number of registered workers

Occupation group	Czech Rep	Estonia	Hungary	Latvia	Lithuania	Poland	Slovakia	Slovenia	TOTAL
Administration, Business & Management Services	6,680	1,660	3,565	10,600	18,650	109,150	18,740	90	<b>169,130</b>
Hospitality & Catering	6,725	1,075	4,735	3,660	8,670	63,110	11,920	135	<b>100,025</b>
Agriculture	1,680	690	570	7,240	11,725	30,915	3,400	5	<b>56,235</b>
Manufacturing	1,700	540	640	2,360	4,275	22,815	3,310	30	<b>35,675</b>
Food/Fish/Meat processing	935	300	205	1,915	3,250	15,245	2,395	5	<b>24,255</b>
Health & Medical Services	1,680	325	1,115	490	1,465	15,710	2,935	30	<b>23,755</b>
Retail & Related Services	1,305	220	830	680	1,640	13,505	2,420	45	<b>20,645</b>
Construction & Land Services	935	190	580	860	2,275	12,525	1,545	15	<b>18,925</b>
Transport	720	155	610	225	745	10,245	730	20	<b>13,445</b>
Entertainment & Leisure	795	120	590	360	720	4,670	1,085	20	<b>8,360</b>
<b>TOTAL TOP TEN</b>	<b>23,155</b>	<b>5,285</b>	<b>13,440</b>	<b>28,395</b>	<b>53,415</b>	<b>297,890</b>	<b>48,475</b>	<b>390</b>	<b>470,445</b>
Total (other/unknown)	1,510	205	1,170	515	1,220	9,765	1,760	70	<b>16,215</b>
<b>GRAND TOTAL</b>	<b>24,665</b>	<b>5,485</b>	<b>14,610</b>	<b>28,910</b>	<b>54,640</b>	<b>307,660</b>	<b>50,230</b>	<b>460</b>	<b>486,660</b>

This table shows registered workers rather than the number of applications made. The figures are for initial applications only (not multiple applications, where an individual is doing more than one job simultaneously, or re-registrations, where an individual has changed employers).

*Note: Please see Introduction: Technical Note on WRS data.*

## Accession Monitoring Report, May 2004 – September 2006

### National Insurance Numbers

#### 13. National Insurance Numbers allocated and purpose of allocation

- Between May 2004 and September 2006, the total number of National Insurance Number applications increased each quarter, bar two, to an overall total of just over 482,000.
- 98.3% of National Insurance Numbers were allocated for employment purposes, 0.7% for benefit purposes and 1% for tax credit purposes.
- For the period 1st May 2004 to 30<sup>th</sup> September 2006, 56% of applicants were male and 44% were female. The percentage of 18-34 year olds was 83%.

**Table 10 National Insurance Numbers allocated and refused, May 2004 - June 2006**

	Total Allocated	Allocated for employment purposes	Allocated for benefit purposes	Allocated for tax credit purposes	Total Refused
<b>2004</b>	63,479	62,539	588	352	1,611
<b>2005</b> Q1	46,394	45,833	297	264	588
Q2	55,623	54,812	495	316	588
Q3	60,399	59,743	411	245	539
Q4	59,402	58,133	446	823	639
<b>2006</b> Q1	62,075	60,830	359	886	606
Q2	57,081	55,855	394	832	827
Q3	71,007	69,613	416	978	1,488
<b>TOTAL</b>	<b>475,460</b>	<b>467,358</b>	<b>3,406</b>	<b>4,696</b>	<b>6,886</b>

Note:

\* Reporting periods are:

2004 = 1 May- 29 December 2004, Q1 2005 = 30 December 2004 - 30 March 2005, Q2 2005 = 31 March – 29 June 2005, Q3 2005 = 30 June - 30 September 2005, Q4 2005 = 1 October - 31 December 2005. Q1 2006 = 1 January - 31 March 2006, Q2 2006 = 1 April - 30 June 2006, Q3 = 1 July - 30 September 2006

Accession Monitoring Report, May 2004 – September 2006

**14. National Insurance Number applications by region**

**Table 11 National Insurance Numbers allocated and refused by region, May 2004 - Sept. 2006**

	2004	2005				2006			TOTAL
		Q1	Q2	Q3	Q4	Q1	Q2	Q3	
London	20,816	11,645	15,241	16,964	14,347	15,513	13,266	16,168	<b>123,960</b>
South East	10,645	5,333	6,984	7,820	8,110	8,784	6,522	7,355	<b>61,553</b>
East of England	7,175	5,829	6,301	4,428	4,185	6,563	5,948	8,134	<b>48,563</b>
Scotland	3,701	3,610	4,710	5,865	6,396	4,809	5,840	8,546	<b>43,477</b>
North West	4,103	4,134	3,754	6,634	5,853	4,514	5,781	7,407	<b>42,180</b>
East Midlands	4,791	4,293	5,004	5,441	6,143	5,466	3,993	5,129	<b>40,260</b>
West Midlands	4,027	3,198	4,003	4,355	4,499	5,346	4,338	5,771	<b>35,537</b>
South West	4,200	3,371	3,440	3,830	4,181	4,377	3,854	3,951	<b>31,204</b>
Yorks & Humber	2,467	2,976	3,706	2,906	2,010	3,345	4,733	5,590	<b>27,733</b>
Wales	1,605	1,498	1,614	1,282	2,297	1,936	1,342	1,544	<b>13,118</b>
North East	569	474	614	757	937	1,091	1,302	1,518	<b>7,262</b>
Fast-track**	991	621	840	656	1,083	937	989	1,382	<b>7,499</b>
<b>TOTAL</b>	<b>65,090</b>	<b>46,982</b>	<b>56,211</b>	<b>60,938</b>	<b>60,041</b>	<b>62,681</b>	<b>57,908</b>	<b>72,495</b>	<b>482,346</b>

Note:

\* Reporting periods are:

2004 = 1 May- 29 December 2004, Q1 2005 = 30 December 2004 - 30 March 2005, Q2 2005 = 31 March - 29 June 2005, Q3 2005 = 30 June - 30 September 2005, Q4 2005 = 1 October - 31 December 2005. Q1 2006 = 1 January - 31 March 2006, Q2 2006 = 1 April - 30 June 2006, Q3 2006 = 1 July - 30 September 2006

\*\*Fast-track applications relate to highly skilled / specialist employment only. Specific regions are unknown.

Jobcentre Plus is currently divided into the eleven regions shown. A customer's postcode determines to which region they are allocated.

**Benefits**

**15. Applications for tax-funded, income-related benefits**

- Table 12 shows applications for income-based Jobseeker's Allowance, Income Support and State Pension Credit.
- Between May 2004 and September 2006, there were 2,328 applications for Income Support, 5,154 applications for income-based Jobseeker's Allowance and 125 applications for State Pension Credit.
- Only 1,091 of these applications were allowed on initial decision to proceed for further consideration of whether the claimants meet the other conditions of entitlement. In addition to these, 153 applications were allowed on re-consideration / appeal.
- In all, so far only 16.3% of applications have been allowed and the vast majority (83.7%) were disallowed on the basis of the Right to Reside and Habitual Residence Tests.
- Most applications were from Polish (44.0%), Czech (16.8%) and Lithuanian nationals (13.4%).

**Table 12 Applications for tax-funded, income-related benefits, May 2004 - September 2006**

	2004	2005				2006			TOTAL
		Q1	Q2	Q3	Q4	Q1	Q2	Q3	
<b>Applications for Income Support</b>									
Disallowed*	204	134	123	251	237	280	355	391	<b>1,975</b>
Allowed to proceed for further processing	5	7	4	5	22	62	88	160	<b>353</b>
<b>TOTAL</b>	<b>209</b>	<b>141</b>	<b>127</b>	<b>256</b>	<b>259</b>	<b>342</b>	<b>443</b>	<b>551</b>	<b>2,328</b>
<b>Applications for income-based Jobseeker's Allowance</b>									
Disallowed*	537	268	358	497	423	603	833	776	<b>4,295</b>
Allowed to proceed for further processing	18	5	12	43	71	158	257	295	<b>859</b>
<b>TOTAL</b>	<b>555</b>	<b>273</b>	<b>370</b>	<b>540</b>	<b>494</b>	<b>761</b>	<b>1,090</b>	<b>1,071</b>	<b>5,154</b>
<b>Applications for State Pension Credit</b>									
Disallowed*	4	7	5	13	15	8	20	21	<b>93</b>
Allowed to proceed for further processing	0	0	0	1	1	4	5	21	<b>32</b>
<b>TOTAL</b>	<b>4</b>	<b>7</b>	<b>5</b>	<b>14</b>	<b>16</b>	<b>12</b>	<b>25</b>	<b>42</b>	<b>125</b>
<b>Total disallowed*</b>	<b>745</b>	<b>409</b>	<b>486</b>	<b>761</b>	<b>675</b>	<b>891</b>	<b>1,208</b>	<b>1,188</b>	<b>6,363</b>
<b>Total allowed to proceed for further processing</b>	<b>23</b>	<b>12</b>	<b>16</b>	<b>49</b>	<b>94</b>	<b>224</b>	<b>350</b>	<b>476</b>	<b>1,244</b>
<b>TOTAL</b>	<b>768</b>	<b>421</b>	<b>502</b>	<b>810</b>	<b>769</b>	<b>1,115</b>	<b>1,558</b>	<b>1,664</b>	<b>7,607</b>

\*on the Right to Reside and Habitual Residence tests.  
 Reporting periods are: 2004 = 1 May- 31 December 2004. Q1 2005 = 1 January - 31 March 2005, Q2 2005 = 1 April - 30 June 2005, Q3 2005 = 1 July - 30 September 2005, Q4 2005 = 1 October- 31 December 2005. Q1 2006 = 1 January - 31 March 2006, Q2 2006 = 1 April - 30 June 2006, Q3 2006 = 1 July - 30 September 2006

Accession Monitoring Report, May 2004 – September 2006

**16. Nationality of applicants for tax-funded, income-related benefits**

**Table 13 Applications for tax-funded, income-related benefits by nationality, May 2004 - September 2006**

	2004	2005				2006			TOTAL
		Q1	Q2	Q3	Q4	Q1	Q2	Q3	
Czech Rep	246	64	79	177	115	171	201	225	<b>1,278</b>
Estonia	23	14	11	14	12	13	22	30	<b>139</b>
Hungary	23	18	34	32	33	28	40	59	<b>267</b>
Latvia	42	29	51	62	67	93	132	102	<b>578</b>
Lithuania	84	52	75	101	117	160	209	222	<b>1,020</b>
Poland	262	166	198	338	315	513	739	822	<b>3,353</b>
Slovakia	82	77	53	84	105	130	206	196	<b>933</b>
Slovenia	6	1	1	2	5	7	9	8	<b>39</b>
<b>TOTAL</b>	<b>768</b>	<b>421</b>	<b>502</b>	<b>810</b>	<b>769</b>	<b>1,115</b>	<b>1,558</b>	<b>1,664</b>	<b>7,607</b>

**17. Applications for tax-funded, income-related benefits by region**

**Table 14 Applications for tax-funded, income-related benefits by region, May 2004 - September 2006**

	2004	2005				2006			TOTAL
		Q1	Q2	Q3	Q4	Q1	Q2	Q3	
London	234	108	168	275	240	314	394	483	<b>2,216</b>
Yorks & Humber	69	73	41	77	89	121	252	212	<b>934</b>
North West	125	52	79	98	90	141	172	176	<b>933</b>
East of England	44	37	35	82	59	101	156	157	<b>671</b>
South East	85	28	40	55	83	79	138	134	<b>642</b>
West Midlands	47	30	53	50	41	73	104	140	<b>538</b>
East Midlands	32	28	21	50	57	91	117	124	<b>520</b>
Scotland	38	24	30	47	40	77	81	105	<b>449</b>
North East	49	10	13	27	22	34	52	42	<b>249</b>
South West	22	21	13	23	21	44	42	50	<b>236</b>
Wales	23	10	9	26	27	33	50	41	<b>219</b>
<b>TOTAL</b>	<b>768</b>	<b>421</b>	<b>502</b>	<b>810</b>	<b>769</b>	<b>1,115</b>	<b>1,558</b>	<b>1,664</b>	<b>7,607</b>

Reporting periods are:

2004 = 1 May- 31 December 2004. Q1 2005 = 1 January - 31 March 2005, Q2 2005 = 1 April - 30 June 2005, Q3 2005 = 1 July - 30 September 2005, Q4 2005 = 1 October- 31 December 2005. Q1 2006 = 1 January - 31 March 2006, Q2 2006 = 1 April - 30 June 2006, 1 July - 30 September 2006.

Jobcentre Plus is currently divided into the eleven regions shown. A customer's postcode determines to which region they are allocated.

### 18. Applications for Child Benefit

- During the period May 2004 to September 2006, 63% of applications were approved and 17% were rejected.
- There are cases where an application may be processed in a different month to that in which it was received. This is because once a Child Benefit application is made by an A8 national, the Child Benefit Office makes further enquiries about the applicant's date of arrival in the UK and employment status, in order to ascertain whether or not the applicant passes the right to reside test.
- The total number of children involved in applications approved this quarter was 8,348.

**Table 15 Applications for Child benefit, May 2004 - September 2006**

	Applications Received	Applications Approved	Applications Rejected*	Applications Terminated
<b>2004</b>	5,089	2,086	907	23
<b>2005 Q1</b>	3,059	1,484	362	21
Q2	4,074	1,451	602	16
Q3	6,834	3,466	993	39
Q4	8,523	3,962	1,205	121
<b>2006 Q1</b>	10,353	7,710	1,932	182
Q2	7,063	7,121	1,896	125
Q3	11,686	8,168	1,930	159
<b>TOTAL</b>	<b>56,681</b>	<b>35,448</b>	<b>9,827</b>	<b>686</b>

\*Includes withdrawn claims.

The total shown for 2004 is for the part year May to December.

### 19. Applications for Tax Credits

- Between May 2004 and September 2006, 58% of applications for tax credits were approved and 8% were rejected.

**Table 16 Applications for Tax Credits, May 2004 - September 2006**

	Applications Received	Applications Approved	Applications Rejected	Applications Terminated
<b>2004</b>	940	252	185	0
<b>2005</b> Q1	1,184	502	126	0
Q2	1,316	1,027	100	0
Q3	1,815	1,179	229	0
Q4	2,775	1,836	164	0
<b>2006</b> Q1	8,068	6,127	593	0
Q2	5,016	3,086	334	0
Q3	8,975	3,503	603	0
<b>TOTAL</b>	<b>30,089</b>	<b>17,512</b>	<b>2,334</b>	<b>0</b>

The total shown for 2004 is for the part year May to December.

**Housing and Homelessness support**<sup>9</sup>

**20. Local Authority lettings**<sup>10</sup>

- The May 2004 to June 2006 total of 128 lettings to A8 nationals, reported by Local Authorities, represents 0.04% of the average number of lettings to all new tenants over a typical 26 month period.

**Table 17 Local Authority lettings, by reason, England.**

	Currently legally employed	Self-employed/provider of services	Recipient of services	Other	TOTAL
<b>2004</b>	29	0	0	4	<b>33</b>
<b>2005 Q1</b>	9	1	0	0	<b>10</b>
Q2	7	1	0	7	<b>15</b>
Q3	12	0	1	4	<b>17</b>
Q4	19	0	0	0	<b>19</b>
<b>2006 Q1</b>	13	1	0	2	<b>16</b>
Q2	18	0	0	0	<b>18</b>
<b>TOTAL</b>	<b>107</b>	<b>3</b>	<b>1</b>	<b>17</b>	<b>128</b>

The total shown for 2004 is for the part year May to December.

All data are provisional.

<sup>9</sup> Data currently collected on DCLG's P1E form, and only available up to June 2006

<sup>10</sup> Estimates are NOT made for non-response by Local Authorities on lettings. Q2 2006 response rate was 82%.

## 21. Homelessness assistance<sup>11</sup>

- The May 2004 to June 2006 total of 1,501 decisions on A8 applications for homelessness assistance represents 0.3% of the average number of homelessness decisions over a typical 26 month period.

**Table 18 Decisions on applications for assistance, <sup>12 13</sup> England.**

	Main duty owed to Applicant	Applicant not owed a main duty	TOTAL
<b>2004</b>	178	277	<b>455</b>
<b>2005 Q1</b>	38	88	<b>126</b>
Q2	34	74	<b>108</b>
Q3	66	119	<b>185</b>
Q4	70	104	<b>174</b>
<b>2006 Q1</b>	67	162	<b>229</b>
Q2	71	153	<b>224</b>
<b>TOTAL</b>	<b>524</b>	<b>977</b>	<b>1,501</b>

The total shown for 2004 is for the part year May to December.

All data are provisional.

<sup>11</sup> Estimates ARE made for non-response by Local Authorities on homelessness assistance.

<sup>12</sup> Under the homelessness provisions of the 1985 and 1996 Housing Acts.

<sup>13</sup> 'Main duty owed' means that the local authority is required to secure accommodation for applicants and their households.

## Accession Monitoring Report, May 2004 – September 2006

- The May 2004 to June 2006 total of 524 A8 acceptances represents 0.2% of the average number of acceptances of homelessness applications over a typical 26 month period.

**Table 19 Homeless households owed a main duty<sup>14</sup> by reason for eligibility, England.**

	Currently legally employed	Self- employed/ provider of services	Recipient of services	Other	TOTAL
<b>2004</b>	123	6	2	47	<b>178</b>
<b>2005</b> Q1	30	1	0	7	<b>38</b>
Q2	26	1	0	7	<b>34</b>
Q3	47	0	2	17	<b>66</b>
Q4	49	3	0	18	<b>70</b>
<b>2006</b> Q1	48	0	0	19	<b>67</b>
Q2	52	1	0	18	<b>71</b>
<b>TOTAL</b>	<b>375</b>	<b>12</b>	<b>4</b>	<b>133</b>	<b>524</b>

The total shown for 2004 is for the part year May to December.

All data are provisional.

<sup>14</sup> 'Main duty owed' means that the local authority is required to secure accommodation for applicants and their households.

**ANNEX A**

**All occupations in which registered workers are employed, Total July 2004-September 2006  
(May and June 2004 unavailable)**

<b>OCCUPATION (In alphabetical order)</b>	<b>TOTAL July 2004 to September 2006</b>
Accountant, certified	30
Accountant, chartered	5
Accountant, financial	130
Accountant, trainee	140
Actor	5
Actuary	5
Administrator (utilities)	30
Administrator / receptionist, medical	225
Administrator, (government & related)	40
Administrator, comms / marketing / advertising	375
Administrator, finance	765
Administrator, financial services	215
Administrator, general	4,200
Administrator, hospital	60
Administrator, Human Resources	425
Administrator, IT	335
Administrator, office	1,580
Administrator, records	295
Administrator, sports and leisure	120
Administrator, university	65
Agricultural machinery operator	1,060
Air Steward / Stewardess	195
Airport staff	185
Alternative/complementary medicine specialist	15
Anaesthetist	120
Animal husbandry	545
Architect	245
Architectural Technician	255
Artist / sculptor	65
Arts officer, Producers or Director	45
Auditor	35
Author, writer	10
<hr/>	
Baker	2,020
Bank Manager	10
Banker, Business	25
Banker, International	20
Banker, Investment	35
Banker, Personal	10
Bar staff	6,720
Barrister	25
Beautician	170
Bricklayer / mason	1,100
Butcher / Meat cutter	1,815
<hr/>	
Call centre agent / operator	595
Camera person / Photographer	45

Accession Monitoring Report, May 2004 – September 2006

Care assistants and home carers	14,090
Caretaker, school	80
Carpenter / joiner	2,920
Caseworker (legal)	5
Cashier (bank, building society)	110
Cashier / check-out operator	1,445
Caterer, higher education	15
Caterer, school	45
Chef, head	450
Chef, other	5,410
Chef, second	260
Chemical engineer	125
Childminders and related occupations	920
Circus performer	15
Circus rigger	70
Civil engineer	355
Cleaner, domestic staff	23,595
Cold store operative	55
Conductor (railways)	10
Conductor, bus	25
Construction materials delivery	125
Constructor, road	190
Constructor, roofing	205
Constructor, steel	605
Consultant, hospital	165
Crop harvester	9,390
<hr/>	
Dancer or choreographer	15
Deliveryman	340
Dental Hygienist	50
Dental Nurse	275
Dental practitioner	335
Detention /Custody guard /officer	10
Dietician	0
Director/Senior executive	140
Dock Worker	55
Doctor (hospital)	485
Driver, bus	2,450
Driver, coach	145
Driver, crane	40
Driver, delivery van	3,005
Driver, fork-lift	570
Driver, HGV (Heavy Goods Vehicle)	3,990
Driver, PCV (Passenger Carrying Vehicle)	730
Driver, taxi	5
Driver, train	5
Driver, underground	0
<hr/>	
Electrician	460
Engineer, electrical	140
Engineer, gas	10
Engineer, hardware (computer)	205
Engineer, oil and natural gas	70
Engineer, other transport related	325
Engineer, railway	60

Accession Monitoring Report, May 2004 – September 2006

Engineer, software	340
Engineer, water	15
Entertainer	320
<hr/>	
Farm worker/ Farm hand	21,010
Financial Adviser	100
Financial Consultant	120
Fisherman	40
Fishmonger / filleter / gutter	815
Fitness coach	80
Floorer and wall tiler	145
Flower picker	940
Food processing operative (fruit / veg)	7,095
Food processing operative (meat)	5,760
Foreign language teacher (private)	25
Forestry workers	125
Fruit picker (farming)	4,255
<hr/>	
Gardener / landscape gardener	1,495
General Practitioner	90
Groundsman	495
<hr/>	
Hairdresser or related occupation	300
Handyman, general (building and contracting)	1,505
Hotel porter	2,760
<hr/>	
Interpreter	25
IT strategy and planning professionals	120
<hr/>	
Kitchen and catering assistants	27,410
<hr/>	
Laboratory assistant	245
Labourer, building	12,225
Launderer, dry cleaner, presser	2,065
Lawyer / Solicitor	35
Legal Clerk	35
Legal secretary	20
Leisure and theme park attendants	1,995
Leisure and travel service occupations	545
Lifeguard	65
<hr/>	
Maid / Room attendant (hotel)	15,765
Maintenance (electrical)	150
Maintenance (gas)	15
Maintenance (water/sewage)	20
Management Accountant	30
Manager, bar	115
Manager, care home	20
Manager, catering	285
Manager, customer care	165
Manager, entertainment /arts /leisure	70
Manager, farm	40
Manager, financial	170
Manager, health and social services	50
Manager, hotel	165

Accession Monitoring Report, May 2004 – September 2006

Manager, Human Resources / Training	140
Manager, IT	60
Manager, office	440
Manager, other hospitality	280
Manager, quality	115
Manager, restaurant	215
Manager, retail	310
Manager, safety and hygiene	35
Manager, utilities	15
Market and street traders and assistants	40
Mechanic	1,735
Mechanical engineer	525
Merchandisers and window dressers	80
Midwife	5
Musicians	50
<hr/>	
Nurse	250
Nursery nurse	345
Nursing auxiliaries and assistants	370
<hr/>	
Optician	40
<hr/>	
Packer	27,350
Painter and decorator	920
Personal assistant	620
Pharmacist / Pharmacologist	310
Physiologist	10
Physiotherapist	50
Plasterer	220
Playgroup leader / assistant	195
Plumbers, heating and ventilating engineer	225
Policeman/woman	0
Power station staff	20
Prison Officer	0
Process operative (electronic equipment)	2,290
Process operative (other Factory worker)	111,955
Process operative (Textiles)	1,655
Process operative (Vehicle manufacturing)	675
Production Manager	135
Programmer, computer	265
Property sales and lettings	85
Psychiatrist	40
Psychologist	10
Purchaser (retail trade)	140
<hr/>	
Receptionist (office)	865
Receptionist, hotel	1,375
Refuse and salvage occupation	660
Researcher (medical)	210
Researcher, higher education	270
Residential wardens and Houseparents	145
Retailer	360
Road sweeper	370
Roofer, roof tiler and slater	95
<hr/>	

Accession Monitoring Report, May 2004 – September 2006

Sales and retail assistants	12,195
School secretary	25
Secretary	280
Secure delivery worker	40
Security Guard	1,400
Senior manager	50
Sewage Worker	15
Shelf stacker	310
Ship hand	45
Ship's Captain	5
Site manager (construction)	115
Site Manager (extraction industry)	5
Site supervisor (construction)	130
Site Supervisor (extraction industry)	10
Skilled machine operator (construction)	805
Skilled machinery operator (extraction)	360
Skilled vehicle operator (construction)	90
Slaughterer, meat	280
Social Worker	285
Software analyst	140
Sports and leisure assistants	580
Sports coach	15
Sports Manager	0
Sportsperson (professional)	55
Steward / Stewardess (ferry/shipping)	55
Supervisor (gas/water/electric)	10
Supervisor, door /bouncer	35
Supervisor, production	310
Supervisor, retail	205
Supplier, construction materials	35
Surgeon	55
Surveyor	95
Systems analyst	125
Teacher, higher education	155
Teacher, primary and nursery education	90
Teacher, secondary education	90
Teacher, special needs education	60
Teacher's assistant	530
Technician, medical	125
Telecommunications administrator	75
Telecommunications Engineer	125
Telecommunications Manager	5
Telecommunications Supervisor	10
Telephone salesperson	95
Telesales Supervisor	15
Ticketeer and station attendants	100
Translator	70
Tutor (private)	30
Typist	65
Veterinarian	95
Waiter, waitress	17,765
Ward Sister	10

## Accession Monitoring Report, May 2004 – September 2006

Warden (care home)	45
Warehouse manager	45
Warehouse manager	130
Warehouse Operative	31,050
Warehouse Supervisor	260
Warehouse Supervisor	95
Water works staff	20
Welder	1,860
Welder	860
Wholesaler	25
Window cleaner	100
Worker, gas	5
Worker, oil	15
<hr/>	
Not Stated	10,330
<hr/>	
<b>Total</b>	<b>447,830</b>
<hr/>	

In the previous Accession Monitoring Reports we have arranged the data in Annex A into sectors.

We are no longer doing so, as occupations such as process operative and cleaner appear in more than one sector and the data were inconsistent with other parts of the report. Please see Table 5 on page 14 of the report for a full breakdown of occupation groups (previously called sectors).