



Home Office

BUILDING A SAFE, JUST
AND TOLERANT SOCIETY

DWP Department for
Work and Pensions

 **HM Revenue
& Customs**



**Office of the
Deputy Prime Minister**

Creating sustainable communities

Accession Monitoring Report

May 2004 – September 2005

A joint online report by the Home Office, the Department for Work and Pensions, the HM Revenue & Customs and the Office of the Deputy Prime Minister.

22 November 2005

© Crown Copyright 2005

This publication is not available in printed format

INTRODUCTION

BACKGROUND.....	1
KEY FINDINGS.....	1
NOTE ON THE PUBLICATION.....	3
NOTE ON THE WORKER REGISTRATION SCHEME DATA.....	3
TECHNICAL NOTE.....	3

WORKER REGISTRATION SCHEME (WRS)

APPLICANTS AND APPLICATIONS TO THE WRS

1. Applicants.....	4
1.a. Applications.....	6

APPLICANT PROFILE

2. Nationality of applicants	7
------------------------------------	---

PROFILE OF REGISTERED WORKERS

3. Age and Gender of registered workers.....	8
4. Dependants of registered workers	10
5. Sectors in which registered workers are employed	11
6. Occupations in which registered workers are employed	13
7. Registered workers' hours of work and wages	15
8. Proportion of registered workers in temporary/permanent employment.....	15
9. Geographical distribution of registered workers.....	16
10. Geographical distribution of registered workers by sector	18
11. Nationality of registered workers by sector.....	21

NATIONAL INSURANCE NUMBERS

12. National Insurance Numbers allocated and purpose of allocation.....	23
13. National Insurance Number applications by region	24

BENEFITS

14. Applications for tax-funded, income-related benefits	25
15. Nationality of applicants for tax-funded, income-related benefits	26
16. Applications for tax-funded, income-related benefits by region	26
17. Applications for Child Benefit	27
18. Applications for Tax Credits	28

HOUSING AND HOMELESSNESS SUPPORT

19. Local Authority Lettings.....	29
20. Homelessness assistance.....	29

ANNEX A All occupations in which registered workers are employed	31
---	----

INTRODUCTION

Background

On 1 May 2004, ten countries joined the European Union (EU). Those countries are: Cyprus; the Czech Republic; Estonia; Hungary; Latvia; Lithuania; Malta; Poland; Slovakia; and Slovenia. From that date, nationals of Malta and Cyprus have had full free movement rights and rights to work, throughout the European Union. Prior to enlargement, existing EU member states had the right to regulate access to their labour markets by nationals of the other eight countries – the ‘Accession 8’ or ‘A8’. The UK Government put in place transitional measures to regulate A8 nationals’ access to the labour market (via the Worker Registration Scheme) and to restrict access to benefits.

Key Findings

- Nationals from the Accession 8 countries continue to come to the UK to work, contributing to the success of the UK economy, whilst making very few demands of our welfare system or public services.
- In total there were 293 thousand applicants to the Worker Registration Scheme between 1 May 2004 and 30 September 2005.
- Accession workers are continuing to go where the work is, helping to fill the gaps in our labour market, particularly in administration, business and management, hospitality and catering, agriculture, manufacturing and food, fish and meat processing.
- In many cases Accession nationals are supporting the provision of public services in communities across the UK. Between July 2004 and September 2005, over 4,000 Accession country nationals registered as bus, lorry and coach drivers and almost 7,500 as care workers. There were 700 teachers, researchers and classroom assistants; almost 400 dental practitioners (including hygienists and dental nurses); and over 500 GPs, hospital doctors, nurses and specialists.
- Just under a fifth of registered workers were based in London. However, workers are based all over the UK the proportion applying to London fell from 26% in Q2 2004 to 12% in the third quarter 2005. At the same time the proportion applying elsewhere has increased and in the latest quarter the highest proportion of workers was in the Anglia region.
- 97% of workers were working full time, and 99% of applications for National Insurance numbers made by Accession country nationals between May 2004 and September 2005 were for employment purposes.

Accession Monitoring Report, May 2004 – September 2005

- The vast majority of workers are young and single, 82% of workers were aged between 18 and 34. 95% of registered workers had no dependants living with them in the UK, and only 3% had dependants under the age of 17 with them.
- The numbers applying for tax-funded income-related benefits, child benefit, tax credits and housing support remain very low. For example, only 2,501 applications for Income Support and Jobseeker's Allowance were processed between May 2004 and September 2005, and of these applications only 100 were allowed to proceed for further consideration.

Note on the publication

This is the fifth of a series of quarterly reports based on provisional Management Information collected through the Worker Registration Scheme (WRS) and manual monitoring of applications for National Insurance Numbers, claims for benefits, applications for tax credits and applications for housing and homelessness assistance. The figures published in the earlier reports have been updated to include applications that were previously outstanding. As there are now 1 part quarter (May-June) and 5 whole quarters (July-Sept, Oct-Dec, Jan-Mar, Apr-Jun, and Jul-Sept) available the data is presented in quarters although for continuity some of the charts are still shown as monthly data.

Note on the Worker Registration Scheme data

Nationals of the A8 countries who wish to take up employment in the UK are generally required to register with the WRS. The statistics in this publication cover those that have registered to work with the Home Office: workers who are self-employed do not need to register and are therefore not included in these figures, there may also be other workers from the accession countries who for one reason or another do not register and are thus also not included in these figures. The data from the WRS provided here is data on applicants to the scheme rather than applications (with the exception of section 1.a.). Applicants must register more than once if they are employed by more than one employer. They must also re-register if they change employer. Each application to the WRS therefore represents one job, not one applicant. To avoid counting applicants more than once, each applicant is represented only once in this report – with information relating to the first job for which they registered.

Data is provisional and an estimated 2,520 applications from the period remain outstanding. In these cases final decisions had not been issued at the time of producing this report. All WRS data in this report is sorted according to the date the applicant applied. The 'date applied' is the date the applicant puts on the application form. There will be cases in which there is a delay between when the forms are filled in or posted and when the applications are received by the Home Office.

Data on applicants to the Worker Registration Scheme (WRS) is not a measurement of net migration to the UK (inflows minus outflows): rather, it gives gross (cumulative) figures for the number of workers applying to the WRS. The figures are not current: an individual who has registered to work and who leaves employment is not required to de-register, so some of those counted will have left the employment for which they registered and indeed some are likely to have left the UK.

Technical Note

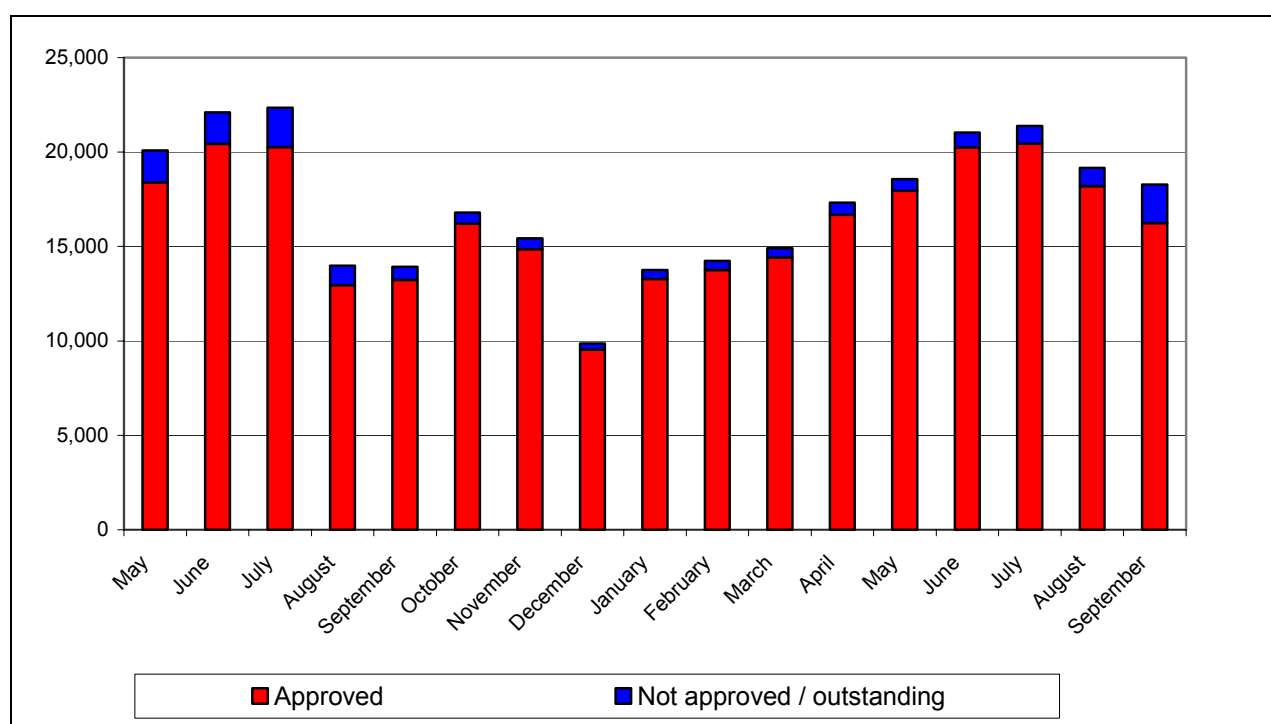
- All Worker Registration Scheme figures (other than percentages) are rounded to the nearest 5.
† indicates 1 or 2.
- Because of rounding, totals may not sum. All percentages are calculated from non-rounded figures.
- Q2 2004 is only a part quarter of May and June so care should be taken when comparing this with subsequent quarters.

WORKER REGISTRATION SCHEME (WRS)

Applicants and Applications to the WRS

1. Applicants

Chart 1: Applicants applied by month applied. May 2004 – September 2005



- In total there were 293 thousand applicants from 1 May 2004 to 30 September 2005, 277 thousand of whom were issued with Worker Registration certificates and cards.
- In the first 3 months applications peaked at over 20 thousand per month, it has since fluctuated slightly with a low of around 10 thousand applicants in December. Since then it has increased again towards the summer and the levels in July to September were higher than in the same months in 2004.

Accession Monitoring Report, May 2004 – September 2005

Table 1: Applicants by quarter applied. May 2004 – September 2005.

	Approved	Refused ¹	Exempt ²	Withdrawn ³	SUB-TOTAL	Estimated Outstanding	TOTAL
Q2 2004	38,825	275	550	2,550	42,195	5	42,200
Q3 2004	46,440	275	430	3,120	50,260	0	50,260
Q4 2004	40,600	95	270	1,110	42,075	†	42,075
Q1 2005	41,435	115	475	860	42,890	15	42,905
Q2 2005	54,880	85	535	1,310	56,810	130	56,945
Q3 2005	54,880	65	230	1,285	56,460	2,370	58,830
TOTAL	277,060	910	2,495	10,230	290,695	2,520	293,215

This table shows applicants rather than the number of applications made. The figures are for initial applications only (not multiple applications, where an individual is doing more than one job simultaneously, nor re-registrations, where an individual has changed employers).

Note: Please see Introduction: Technical Note on WRS data

¹ 'Refused': Grounds for refusal include no evidence of employment, insufficient evidence of citizenship of one of the A8 countries.

² Exempt: Under the Accession (Immigration and Worker Registration) Regulations 2004, certain categories of A8 national are exempt from the requirement to register (e.g. those who have been employed legally in the UK for 12 months or more, without interruption).

³ 'Withdrawn': The applicant withdrew their application.

Accession Monitoring Report, May 2004 – September 2005

1.a. Applications

- A total of 353 thousand applications, excluding outstanding applications, were made between May 2004 and September 2005, of which 338 thousand were approved (i.e. the worker's employment was registered).
- The total includes 46 thousand applications to re-register (from those who have previously registered but have changed employer), 3 thousand multiple registrations (from those working for more than one employer simultaneously), and 13 thousand multiple re-registrations (from those registering for subsequent, additional jobs, or those who have left their employer and are re-registering for more than one job). These applications account for the difference between the number of applicants and the number of applications.
- Over the reporting period, the number of re-registrations has risen from 540 in the part quarter, May and June 2004, to 12,990 in the latest quarter. The number of multiple registrations has fallen from 1,075 in the part quarter, May and June 2004, to 375 in the last quarter.

Table 1.a.: Multiple applications and Re-registrations. May 2004 – September 2005.

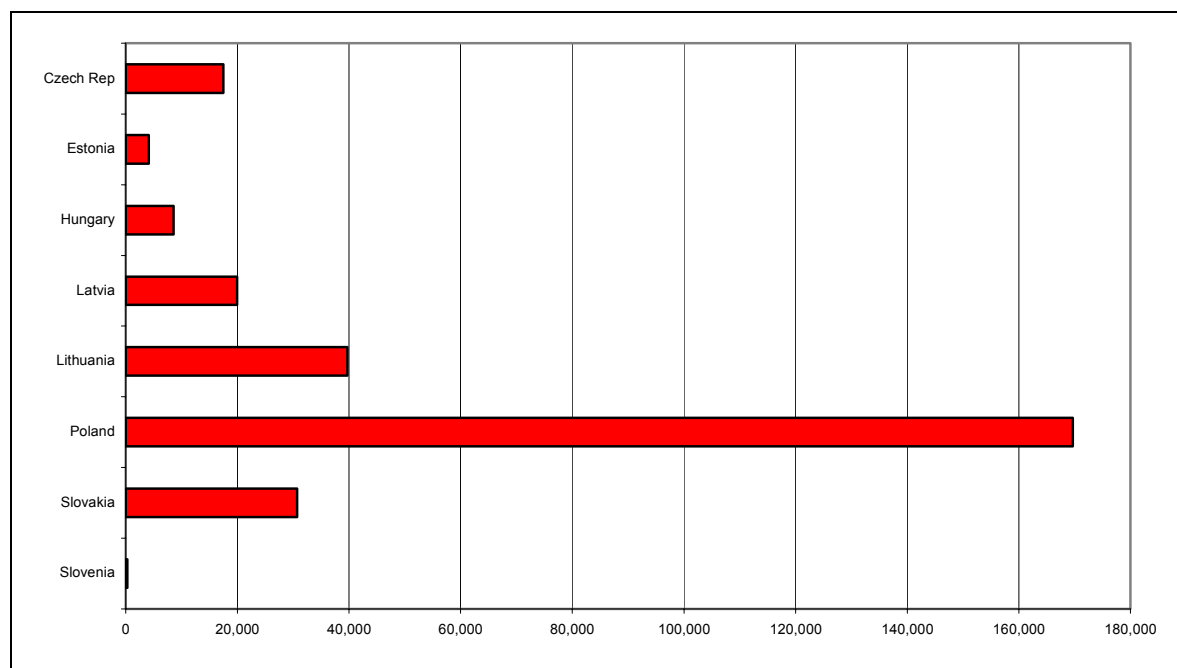
	Multiple	Re-registration	Multiple Re-registration	TOTAL
Q2 2004	1,075	540	920	2,535
Q3 2004	560	2,940	1,350	4,850
Q4 2004	390	6,650	1,585	8,625
Q1 2005	305	9,745	2,390	12,440
Q2 2005	335	13,200	3,410	16,950
Q3 2005	375	12,990	3,825	17,190
TOTAL	3,045	46,060	13,480	62,590

Note: Please see Introduction: Technical Note on WRS data

Applicant Profile

2. Nationality of applicants

Chart 2: Nationality of applicants: May 2004 – September 2005.



- In the period 1 May 2004 to 30 September 2005, the highest proportion of applicants were Polish (58% of the total), followed by Lithuanian (14%) and Slovak (11%) applicants. These proportions have remained roughly constant throughout the period.

Table 2: Nationality of applicants by quarter applied. May 2004 – September 2005.

	Czech Rep	Estonia	Hungary	Latvia	Lithuania	Poland	Slovakia	Slovenia	Other	TOTAL
Q2 2004	2,520	660	1,090	2,930	7,715	23,465	3,730	50	30	42,195
Q3 2004	3,510	770	1,315	3,660	7,595	28,065	5,240	65	40	50,260
Q4 2004	3,020	615	1,430	2,770	5,355	23,920	4,875	55	30	42,075
Q1 2005	2,840	730	1,460	3,145	5,905	23,775	4,945	55	35	42,890
Q2 2005	2,815	740	1,650	4,315	7,645	33,590	5,995	30	30	56,810
Q3 2005	2,805	595	1,615	3,090	5,475	36,850	5,950	35	50	56,460
TOTAL	17,510	4,105	8,565	19,915	39,690	169,675	30,735	285	215	290,695
As % of Total	6%	1%	3%	7%	14%	58%	11%	<0.5%	<0.5%	100%

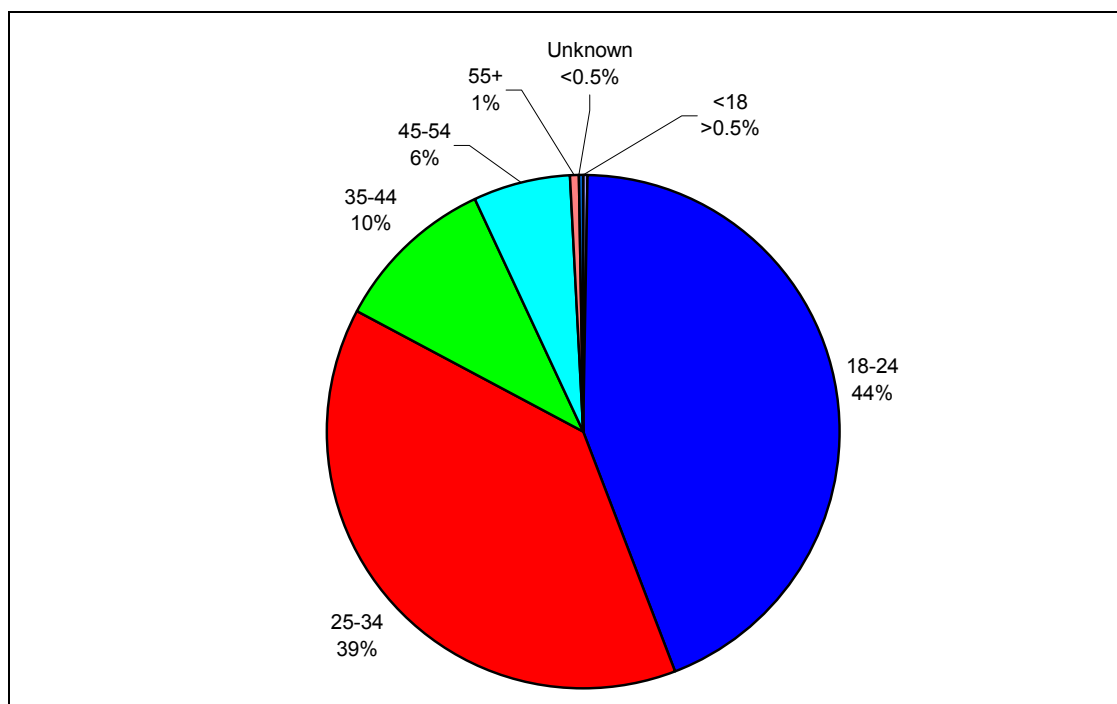
This table shows applicants rather than the number of applications made. The figures are for initial applications only (not multiple applications, where an individual is doing more than one job simultaneously, nor re-registrations, where an individual has changed employers).

Note: Please see Introduction: Technical Note on WRS data

Profile of Registered Workers

3. Age and Gender of registered workers

Chart 4: Age of registered workers. May 2004 – September 2005.



- Of those who applied between May 2004 and September 2005, 83% of registered workers were aged 18 – 34. This percentage has been fairly consistent across the period, although there were more people in the younger 18-24 bracket during the summer months of June to August.

Table 4: Age of registered workers. May 2004 – September 2005.

	Q2 2004	Q3 2004	Q4 2004	Q1 2005	Q2 2005	Q3 2005	TOTAL	As % of total
<18	100	140	80	100	185	245	845	<0.5%
18-24	16,155	21,960	16,230	15,925	23,180	28,165	121,615	44%
25-34	16,160	17,030	16,635	17,260	21,650	18,225	106,965	39%
35-44	3,740	4,385	4,525	4,935	5,980	4,955	28,525	10%
45-54	2,250	2,510	2,660	2,785	3,390	2,890	16,490	6%
55-64	335	325	355	355	400	345	2,120	1%
65+	5	5	10	10	5	5	35	<0.5%
Others	80	80	100	65	85	70	485	<0.5%
TOTAL	38,825	46,440	40,600	41,435	54,880	54,880	277,060	100%

This table shows registered workers rather than the number of applications made. The figures are for initial applications only (not multiple applications, where an individual is doing more than one job simultaneously, nor re-registrations, where an individual has changed employers).

Note: Please see Introduction: Technical Note on WRS data

Accession Monitoring Report, May 2004 – September 2005

- The Male:Female ratio for those who applied between May 2004 and September 2005 was 57:43. However this proportion has varied from a ratio of 53:47 in the first quarter after accession to 60:40 in the second quarter of 2005.

Accession Monitoring Report, May 2004 – September 2005

4. Dependants of registered workers⁴

- A very small minority (5%) of registered workers who applied between May 2004 and September 2005 had dependants living with them in the UK. Amongst those who did have dependants, the average number of dependants was 1.3.
- The number of dependants as a proportion of the number of registered workers has remained roughly consistent throughout the period.

Table 5: Registered workers' dependants, May 2004 – September 2005.

	Total registered workers	Registered workers with dependants	Number of dependants		
			Under 17	17 and over	TOTAL
Q2 2004	38,825	1,905	1,345	1,125	2,470
Q3 2004	46,440	2,155	1,465	1,320	2,785
Q4 2004	40,600	2,585	1,635	1,625	3,265
Q1 2005	41,435	2,415	1,605	1,485	3,090
Q2 2005	54,880	2,945	1,960	1,870	3,830
Q3 2005	54,880	3,210	2,185	1,955	4,140
TOTAL	277,060	15,215	10,200	9,380	19,580

This table shows registered workers rather than the number of applications made. The figures are for initial applications only (not multiple applications, where an individual is doing more than one job simultaneously, nor re-registrations, where an individual has changed employers).

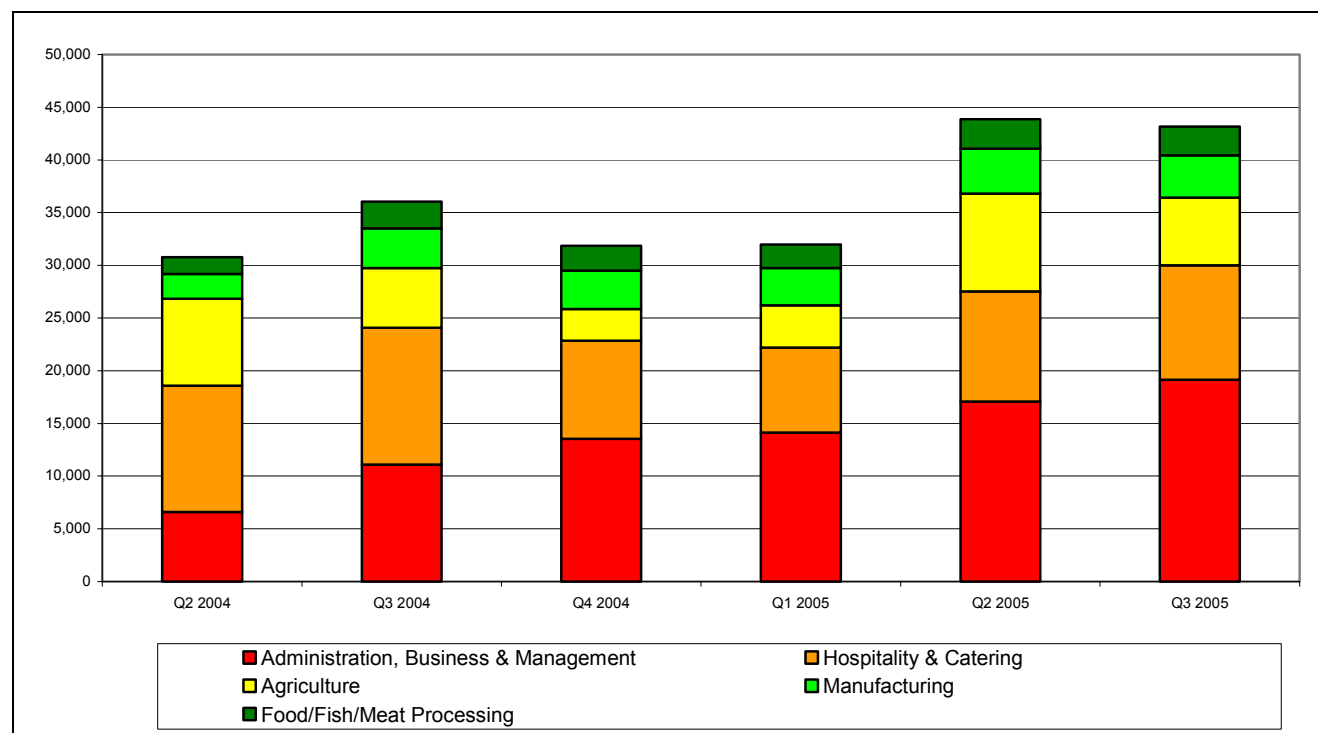
Note: it is likely that there is some 'double counting' of dependants, in the sense that some of those recorded as dependants (particularly older children and spouses) may also have registered in their own right to work in the UK.

Note: Please see Introduction: Technical Note on WRS data

⁴ This data is derived from applicants' responses to the question on the WRS application form: "If your dependants (children and/or spouse or partner) are living with you in the UK, how many of them are: Aged 16 or under?" and "Aged 17 or above?" The Home Office does not verify these responses.

5. Sectors in which registered workers are employed

Chart 5: Top 5 sectors in which registered workers are employed, by quarter applied. May 2004 – September 2005.



- The top five sectors, for registered workers who applied between May 2004 to September 2005, were Administration, Business & Management (29%), Hospitality & Catering (23%), Agriculture (13%), Manufacturing (8%) and Food, Fish and Meat Processing (5%).
- Administration, Business & Management has overtaken Hospitality & Catering as the sector that employs the most accession workers. The proportion of workers in the Administration, Business & Management sector increased from 17% in Q2 2004 to 35% in the latest quarter. Meanwhile, the proportion in Hospitality and Catering fell from 31% in Q2 2004 to 20% in Q3 2005.
- Agriculture is the other sector where there has been a considerable change over the period reflecting the seasonal nature of the work. The proportion of workers who were employed in Agriculture peaked in the summer months making up 21% in Q2 2004 and 17% in Q2 2005 and was lowest during the winter months with only 7% in Q4 2004.

Accession Monitoring Report, May 2004 – September 2005

Table 6: Sectors in which registered workers are employed, by quarter applied. May 2004 – September 2005.

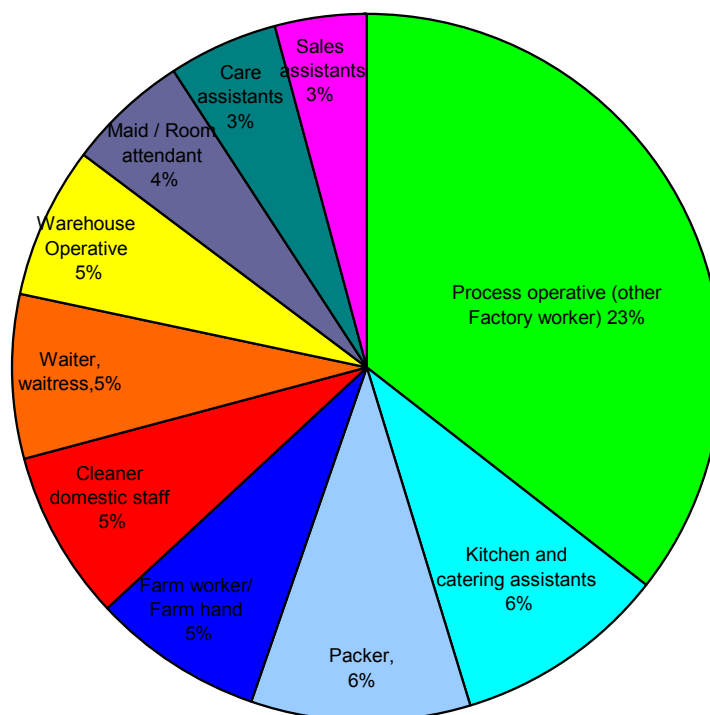
	Q2 2004	Q3 2004	Q4 2004	Q1 2005	Q2 2005	Q3 2005	TOTAL
Administration, Business & Management	6,590	11,110	13,535	14,135	17,075	19,145	81,585
Hospitality & Catering	12,000	12,980	9,325	8,075	10,450	10,870	63,705
Agriculture	8,240	5,660	3,000	3,995	9,285	6,440	36,620
Manufacturing	2,360	3,750	3,640	3,545	4,270	4,000	21,570
Food/Fish/Meat Processing	1,590	2,545	2,345	2,210	2,805	2,745	14,235
Health & Medical	1,170	2,220	2,160	2,300	2,570	3,080	13,505
Retail	1,540	1,950	1,855	1,810	2,120	2,375	11,655
Construction & Land	1,710	1,995	1,480	1,610	1,905	1,955	10,655
Transport	600	910	1,210	1,500	1,870	1,615	7,715
Entertainment & Leisure	790	950	450	890	1,195	1,110	5,380
Education & Cultural	460	545	490	440	475	485	2,890
Real Estate & Property	155	205	170	240	235	245	1,255
Financial Services	135	160	130	115	105	130	780
Security & Protection	95	115	130	100	110	170	725
Computer Services	130	120	135	100	95	120	700
Extraction Industries	75	145	145	85	110	120	680
Telecommunications	55	60	60	80	30	45	330
Utilities (Gas, Electricity, Water)	35	50	40	35	35	50	245
Sporting Activities	45	60	45	40	15	35	235
Government	20	30	25	25	30	35	170
Law-related Services	35	30	25	20	15	20	140
Not Stated	990	850	195	85	80	115	2,305
TOTAL	38,825	46,440	40,600	41,435	54,880	54,880	277,060

This table shows registered workers rather than the number of applications made. The figures are for initial applications only (not multiple applications, where an individual is doing more than one job simultaneously, nor re-registrations, where an individual has changed employers).

Note: Please see Introduction: Technical Note on WRS data

6. Occupations in which registered workers are employed

Chart 6: Top 10 occupations in which registered workers are employed. July 2004 – September 2005.



(May/June 2004 data not available)

Note: Percentages indicate percentage of all workers registered, July 2004 to September 2005

- The top 20 occupations have remained largely consistent over the period.
- The largest proportion of workers (23%) are in general occupations classified as Process operatives (other factory worker). This is followed by Kitchen and catering assistants (6%) and Packers (6%).
- Please refer to **Annex A** for a full table of occupations of registered workers who applied between July 2004 and September 05.

Accession Monitoring Report, May 2004 – September 2005

Table 7: Top 20 occupations in which registered workers are employed, by quarter applied.

July 2004 – June 2005 (May/June 2004 not available)

	Q3 2004	Q4 2004	Q1 2005	Q2 2005	Q3 2005	TOTAL
Process operative (other Factory worker)	8,135	9,835	9,980	13,040	13,740	54,725
Kitchen and catering assistants	3,245	2,695	2,460	3,480	3,410	15,290
Packer	2,610	2,905	3,045	3,260	3,430	15,250
Warehouse Operative	1,505	2,305	2,440	2,540	3,535	12,325
Cleaner, domestic staff	2,340	2,015	2,130	2,465	2,875	11,830
Farm worker/ Farm hand	2,215	1,130	1,705	4,165	2,345	11,560
Waiter, waitress	2,910	2,070	1,700	2,030	2,190	10,905
Maid / Room attendant (hotel)	1,865	1,505	1,305	1,900	2,045	8,620
Care assistants and home carers	1,215	1,360	1,380	1,580	1,910	7,450
Sales and retail assistants	1,325	1,215	1,105	1,395	1,510	6,545
Labourer, building	1,170	910	1,140	1,435	1,440	6,095
Crop harvester	955	280	610	2,205	1,615	5,660
Bar staff	1,150	795	660	805	870	4,285
Food processing operative (fruit / veg)	805	795	705	1,010	845	4,155
Food processing operative (meat)	805	720	565	670	595	3,350
Chef, other	800	580	545	620	665	3,210
Fruit picker (farming)	450	100	125	1,170	845	2,685
Driver, HGV (Heavy Goods Vehicle)	300	435	570	630	515	2,445
Administrator, general	540	460	400	465	465	2,325
Driver, delivery van	265	320	340	405	395	1,725
TOTAL 20	34,595	32,435	32,905	45,270	45,240	190,440
Other	11,845	8,165	8,535	9,610	9,640	47,795
GRAND TOTAL	46,440	40,600	41,435	54,880	54,880	238,235

This table shows registered workers rather than the number of applications made. The figures are for initial applications only (not multiple applications, where an individual is doing more than one job simultaneously, nor re-registrations, where an individual has changed employers).

Note: Please see Introduction: Technical Note on WRS data

7. Registered workers' hours of work⁵ and wages⁶

- 97% of registered workers who applied between May 2004 and September 2005 were working full time (more than 16 hours a week)⁷.
- The vast majority (80%) of registered workers were earning £4.50 - £5.99 per hour.

8. Proportion of registered workers in temporary/permanent employment⁸

- For those who applied in the period from May 2004 to September 2005, 49% of registered workers were in temporary employment and 49% were in permanent employment (3% did not provide this information).
- The proportion of registered workers employed on a temporary or permanent basis varied considerably from sector to sector. In Agriculture, 70% were in temporary employment and 27% in permanent employment. In Administration, Business and Management, 82% were in temporary employment and 15% in permanent employment. In Hospitality and Catering the pattern was reversed, with only 22% in temporary employment and 76% in permanent employment.

⁵ This data is derived from applicants' responses to the question on the WRS application form: "How many hours per week do you normally work?" The Home Office does not verify these responses.

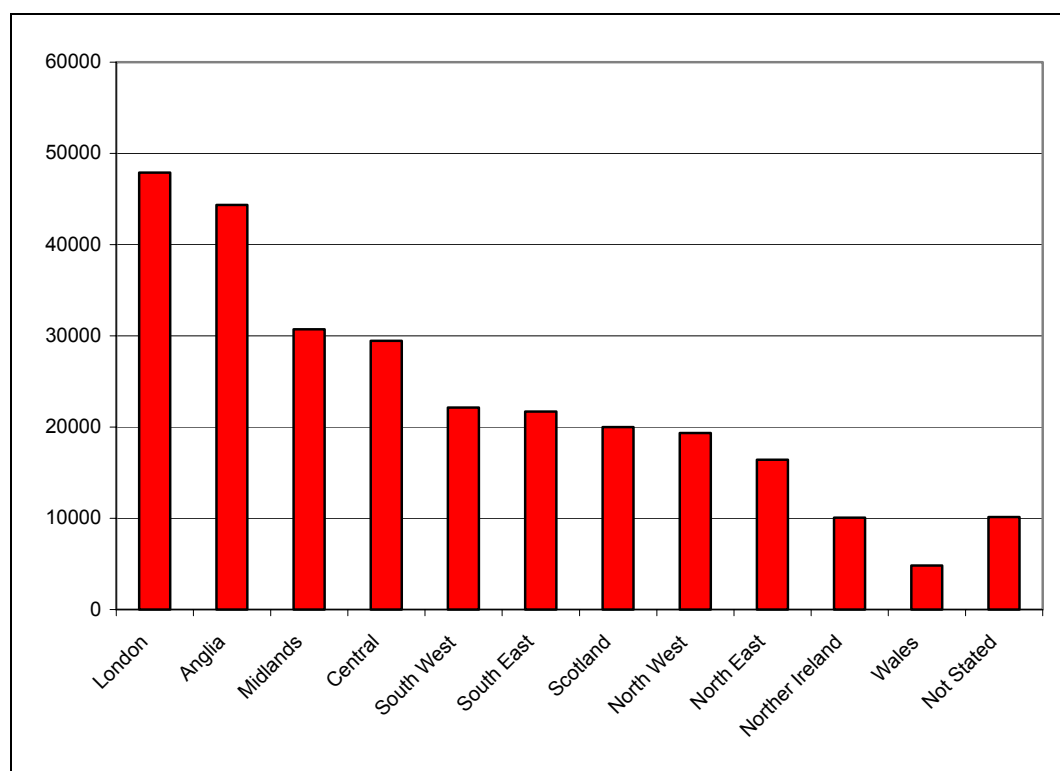
⁶ This data is derived from applicants' responses to the question on the WRS application form: "How much is your hourly rate, before deductions?" The Home Office does not verify these responses.

⁷ The 97% is likely to be an underestimate. The proportion of registered workers working part time is likely to be lower than 3%, because some were doing more than one part time job, simultaneously. The data published here only takes account of one of those jobs – so the total hours an individual was working will in some cases be more than 16.

⁸ This data is derived from applicants' responses to the question on the WRS application form: "What type of employment are you undertaking? (Please indicate by ticking the appropriate box)." The Home Office does not verify these responses.

9. Geographical distribution of registered workers⁹

Chart 7: Geographical distribution of registered workers. May 2004 – September 2005.



- London has had the greatest number of workers registering during the May 2004 to September 2005 period with 17% of the total. This is followed by the Anglia and the Midlands Regions with 16% and 11% of the total respectively.
- Northern Ireland and Wales had the fewest registrations with 4% and 2% of the total respectively.
- The proportion applying to London however fell from 26% in Q2 2004 to just 12% in Q3 2005. At the same time the proportion and number applying elsewhere has increased and in the latest quarter the highest proportion of workers was in the Anglia region.

⁹ Regions are based on the applicant's employer's postcode, where supplied. Regions are defined according to the Post Office's Postal Address Book regions.

Accession Monitoring Report, May 2004 – September 2005

Table 8: Geographical distribution of registered workers. May 2004 – September 2005.

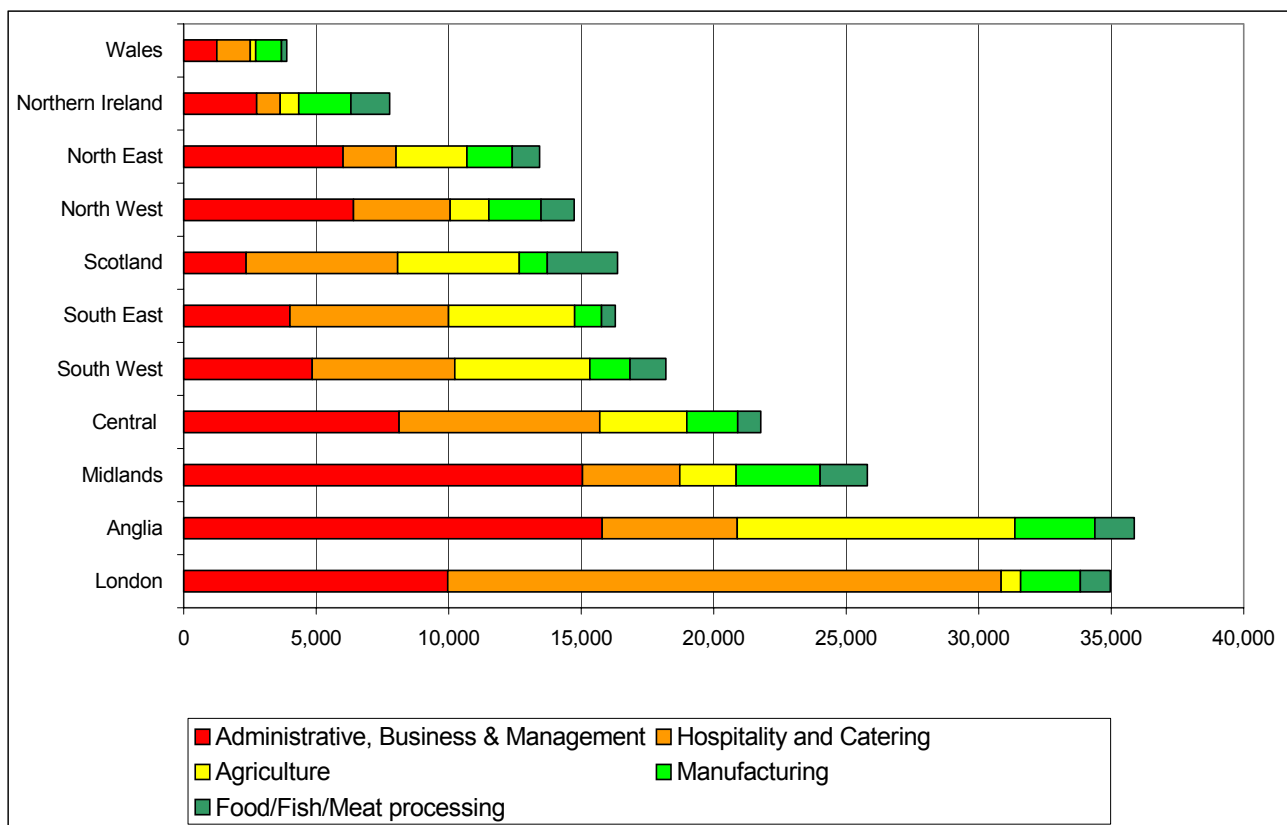
	Q2 2004	Q3 2004	Q4 2004	Q1 2005	Q2 2005	Q3 2005	TOTAL
London	9,985	9,885	7,795	6,790	6,835	6,605	47,895
Anglia	7,950	7,855	6,105	6,100	8,450	7,885	44,350
Midlands	2,930	4,225	4,550	5,640	6,820	6,545	30,715
Central	4,840	4,790	4,260	4,525	5,550	5,505	29,460
South West	2,485	3,550	2,970	3,280	5,165	4,705	22,155
South East	3,930	4,350	2,920	2,710	3,950	3,825	21,685
Scotland	2,250	3,255	2,645	2,285	4,535	5,025	19,995
North West	1,390	2,825	2,685	3,055	4,405	5,000	19,360
North East	1,175	2,330	2,620	2,850	3,645	3,790	16,415
Northern Ireland	745	1,340	1,570	1,835	2,445	2,125	10,065
Wales	450	595	635	875	1,115	1,160	4,830
Not Stated	700	1,440	1,845	1,485	1,960	2,725	10,150
TOTAL	38,825	46,440	40,600	41,435	54,880	54,880	277,060

This table shows registered workers rather than the number of applications made. The figures are for initial applications only (not multiple applications, where an individual is doing more than one job simultaneously, nor re-registrations, where an individual has changed employers).

Note: Please see Introduction: Technical Note on WRS data

10. Geographical distribution of registered workers by sector¹⁰

Chart 8: Top 5 sectors – geographical distribution of registered workers. Cumulative total, May 2004 – September 2005.



Trends within sectors

- 33% of those working in Hospitality and Catering were in London – far more than in any other region. The next highest proportions were working in South Central England and the South East (12% and 9% respectively).
- 29% of those working in Agriculture were in Anglia, followed by the South West (14%), whereas only 2% of Agriculture workers were in London.
- 19% of those working in Administration, Business and Management were in Anglia, 18% were in the Midlands and 12% were in London.

¹⁰ Regions are based on the applicant's employer's postcode, where supplied. Regions are defined according to the Post Office's Postal Address Book regions.

Trends within regions

- 44% of those located in London were working in Hospitality and catering, and 29% of those working in Scotland, but only 11% in Anglia and 9% in Northern Ireland.
- 49% of those located in the Midlands were working in Administration, Business and Management, as were 36% of those in Anglia, but only 18% in the South East and 12% in Scotland.
- 24% of those in Anglia were working in Agriculture as were 23% of those in South West and Scotland.

Accession Monitoring Report, May 2004 – June 2005

Table 9: Top 10 sectors – geographical distribution of registered workers. Cumulative total, May 2004 – September 2005.

	London	Anglia	Midlands	Central	South West	South East	Scotland	North West	North East	Northern Ireland	Wales	Unknown*	TOTAL
Admin, Bus & Management	9,965	15,790	15,050	8,130	4,850	4,010	2,350	6,410	6,010	2,755	1,245	5,015	81,580
Hospitality & Catering	20,880	5,095	3,670	7,570	5,380	5,980	5,725	3,645	2,005	885	1,265	1,605	63,705
Agriculture	735	10,470	2,125	3,290	5,095	4,760	4,585	1,465	2,670	705	210	520	36,625
Manufacturing	2,255	3,025	3,175	1,915	1,520	1,015	1,060	1,970	1,710	1,970	970	975	21,570
Food/Fish/Meat Processing	1,130	1,485	1,780	865	1,360	520	2,645	1,250	1,035	1,455	200	520	14,240
Health and Medical	2,025	1,840	845	2,110	1,205	1,595	940	805	1,010	395	330	395	13,505
Retail	3,595	2,170	915	1,220	555	960	405	665	370	330	105	360	11,660
Construction and Land	1,855	1,160	730	1,530	535	880	1,130	970	480	1,045	120	225	10,655
Transport	920	1,330	1,235	695	555	560	380	995	480	285	95	180	7,715
Entertainment and Leisure	1,105	565	430	750	550	450	235	720	255	45	180	95	5,380
TOTAL TOP TEN	44,470	42,940	29,010	28,075	21,595	20,735	19,460	18,895	16,025	9,870	4,720	9,890	265,680
Total (Others/Unknown)	3,430	1,415	1,705	1,385	560	950	535	465	395	195	110	260	11,400
GRAND TOTAL	47,895	44,355	30,715	29,460	22,155	21,685	19,995	19,360	16,415	10,065	4,830	10,150	277,060

This table shows registered workers rather than the number of applications made. The figures are for initial applications only (not multiple applications, where an individual is doing more than one job simultaneously, nor re-registrations, where an individual has changed employers).

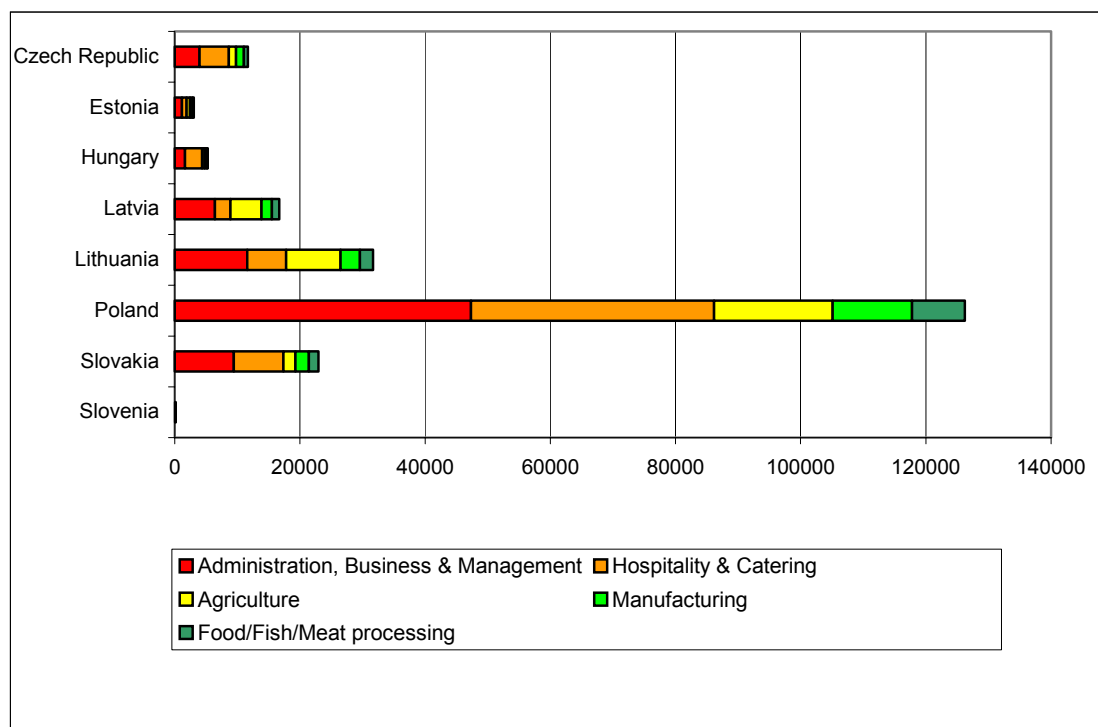
**Postcode not supplied*

Note: Regions are defined according to the Post Office's Postal Address Book regions. Data is based on employer's postcode, where supplied.

Note: Please see Introduction: Technical Note on WRS data

11. Nationality of registered workers by sector

Chart 9: Top 5 sectors – Nationality of registered workers. Cumulative total, May 2004 – September 2005.



- Polish workers made up the largest proportion in every sector. Especially hospitality and catering where 61% of all workers were from Poland compared to 59% of workers in all sectors.
- A greater proportion of workers from Lithuania and Latvia worked in Agriculture than any other nationality. 23% of Lithuanians and 26% of Latvians worked in Agriculture compared to 13% of all workers.

Accession Monitoring Report, May 2004 – June 2005

Table 10: Top 10 sectors – nationality of registered workers. Cumulative total, May 2004 – September 2005.

	Czech Rep	Estonia	Hungary	Latvia	Lithuania	Poland	Slovakia	Slovenia	TOTAL
Administration, Business & Management	3,990	1,135	1,625	6,415	11,570	47,340	9,455	45	81,580
Hospitality & Catering	4,660	745	2,770	2,475	6,250	38,820	7,890	95	63,705
Agriculture	1,155	575	370	4,970	8,700	18,930	1,925	5	36,625
Manufacturing	1,230	385	385	1,640	3,065	12,705	2,135	20	21,550
Food, Fish, Meat Processing	625	200	115	1,210	2,085	8,450	1,550	5	14,240
Health & Medical	1,080	225	645	320	900	8,480	1,835	20	13,505
Retail	890	145	510	440	1,085	7,125	1,440	25	11,660
Construction & Land	645	130	315	615	1,660	6,445	845	0	10,655
Transport	495	100	415	150	540	5,525	475	10	7,715
Entertainment & Leisure	520	70	365	250	530	2,930	705	10	5,380
TOTAL TOP TEN	15,295	3,710	7,515	18,480	36,390	156,740	28,260	235	266,600
Total (other / unknown)	1,085	140	685	360	885	6,125	1,140	40	10,480
GRAND TOTAL	16,385	3,855	8,200	18,835	37,275	162,870	29,395	270	277,060

This table shows registered workers rather than the number of applications made. The figures are for initial applications only (not multiple applications, where an individual is doing more than one job simultaneously, nor re-registrations, where an individual has changed employers).

Note: Please see Introduction: Technical Note on WRS data

National Insurance Numbers

12. National Insurance Numbers allocated and purpose of allocation

- Between May 2004 and September 2005, the total number of National Insurance Number applications increased each quarter to a total of just under 61,000 in the latest quarter.
- 98.7% of National Insurance Numbers were allocated for employment purposes, and 0.8% for benefit and 0.5% for tax credit purposes.
- For the period 1st May 2004 to 30th September 2005, 56.2% of applicants were male and 43.8% were female. The percentage of 18-34 year olds was some 83%.

Table 11: National Insurance Numbers allocated and refused. May 2004 – September 2005.

	Total Allocated	Allocated for employment purposes	Allocated for benefit purposes	Allocated for tax credit purposes	Total Refused
Q2 2004	7,946	7,806	83	57	220
Q3 2004	22,883	22,532	212	139	686
Q4 2004	32,650	32,201	293	156	705
Q1 2005	46,394	45,833	297	264	588
Q2 2005	55,623	54,812	495	316	588
Q3 2005	60,399	59,743	411	245	539
TOTAL	225,895	222,927	1,791	1,177	3,326

Note:

* Reporting periods are:

Q2 2004 = 1 May-30 June 2004, Q3 2004 = 1 July-29 September 2004, Q4 2004 = 30 September-29 December 2004.

Q1 2005 = 30 December 2004 -30 March 2005, Q2 2005 = 31 March -29 June 2005, Q3 2005 = 30 June -30 September 2005.

13. National Insurance Number applications by region

Table 12: National Insurance Numbers allocated and refused by region, May 2004 to September 2005

	Q2 2004	Q3 2004	Q4 2004	Q1 2005	Q2 2005	Q3 2005	TOTAL
London	3,733	7,726	9,357	11,645	15,241	16,964	64,666
South East	1,366	3,432	5,847	5,333	6,984	7,820	30,782
East of England	678	2,340	4,157	5,829	6,301	4,428	23,733
East Midlands	354	1,892	2,545	4,293	5,004	5,441	19,529
North West	445	1,460	2,198	4,134	3,754	6,634	18,625
Scotland	441	1,732	1,528	3,610	4,710	5,865	17,886
West Midlands	235	1,541	2,251	3,198	4,003	4,355	15,583
South West	368	1,360	2,472	3,371	3,440	3,830	14,841
Yorks and Humber	174	872	1,421	2,976	3,706	2,906	12,055
Wales	141	699	765	1,498	1,614	1,282	5,999
North East	75	219	275	474	614	757	2,414
Fast-track claims**	156	296	539	621	840	656	3,108
TOTAL	8,166	23,569	33,355	46,982	56,211	60,938	229,221

Note:

* Reporting periods are:

Q2 2004 = 1 May-30 June 2004, Q3 2004 = 1 July-29 September 2004, Q4 2004 = 30 September-29 December 2004.

Q1 2005 = 30 December 2004 -30 March 2005, Q2 2005 = 31 March -29 June 2005, Q3 2005 = 30 June -30 September 2005.

**Fast-track applications relate to highly skilled / specialist employment only. Specific regions are unknown.

Benefits

14. Applications for tax-funded, income-related benefits

- Table 13 below shows applications for income-based Jobseeker's Allowance, Income Support and State Pension Credit.
- Between May 2004 and September 2005, there were 733 applications for Income Support, 1,738 applications for income-based Jobseeker's Allowance and 30 applications for State Pension Credit.
- Only 86 of these applications were allowed on initial decision to proceed for further consideration of whether the claimants meet the other conditions of entitlement. In addition to these, 14 applications were allowed on re-consideration / appeal.
- In all, so far only 3.8% of applications have been allowed and the vast majority (96.1%) were disallowed on the basis of the Right to Reside and Habitual Residence Tests.
- Most applications were from Polish (38.5%) and Czech nationals (22.6%).

Table 13: Applications for tax-funded, income-related benefits. May 2004 – September 2005

	Q2 2004	Q3 2004	Q4 2004	Q1 2005	Q2 2005	Q3 2005	TOTAL
Applications for Income Support							
Disallowed*	43	60	101	134	123	251	712
Allowed to proceed for further processing	0	3	2	7	4	5	21
TOTAL	43	63	103	141	127	256	733
Applications for income-based Jobseeker's Allowance							
Disallowed*	191	162	184	268	358	497	1,660
Allowed to proceed for further processing	6	8	4	5	12	43	78
TOTAL	197	170	188	273	370	540	1,738
Applications for State Pension Credit							
Disallowed*	0	1	3	7	5	13	29
Allowed to proceed for further processing	0	0	0	0	0	1	1
TOTAL	0	1	3	7	5	14	30
Total disallowed*	234	223	288	409	486	761	2,401
Total allowed to proceed for further processing	6	11	6	12	16	49	100
TOTAL	240	234	294	421	502	810	2,501

*on the Right to Reside and Habitual Residence tests

Reporting periods are:

Q2 2004 = 1 May-30 June 2004, Q3 2004 = 1 July-30 September 2004, Q4 2004 = 1 October-31 December 2004.

Q1 2005 = 1 January -31 March 2005, Q2 2005 = 1 April -30 June 2005, Q3 2005 = 1 July-30 September 2005.

15. Nationality of applicants for tax-funded, income-related benefits

Table 14: Applications for tax-funded, income-related benefits by nationality. May 2004 – September 2005

	Q2 2004	Q3 2004	Q4 2004	Q1 2005	Q2 2005	Q3 2005	TOTAL
Czech Rep	112	70	64	64	79	177	566
Estonia	8	7	8	14	11	14	62
Hungary	1	3	19	18	34	32	107
Latvia	10	18	14	29	51	62	184
Lithuania	23	27	34	52	75	101	312
Poland	67	83	112	166	198	338	964
Slovakia	18	22	42	77	53	84	296
Slovenia	1	4	1	1	1	2	10
TOTAL	240	234	294	421	502	810	2,501

16. Applications for tax-funded, income-related benefits by region

Table 15: Applications for tax-funded, income-related benefits by region. May 2004 – September 2005

	Q2 2004	Q3 2004	Q4 2004	Q1 2005	Q2 2005	Q3 2005	TOTAL
London	57	78	99	108	168	275	785
North West	45	35	45	52	79	98	354
Yorks & Humber	21	26	22	73	41	77	260
South East	43	19	23	28	40	55	208
East of England	10	16	18	37	35	82	198
West Midlands	14	6	27	30	53	50	180
Scotland	8	15	15	24	30	47	139
East Midlands	5	12	15	28	21	50	131
North East	19	13	17	10	13	27	99
South West	11	9	2	21	13	23	79
Wales	7	5	11	10	9	26	68
TOTAL	240	234	294	421	502	810	2,501

Reporting periods are:

Q2 2004 = 1 May-30 June 2004, Q3 2004 = 1 July-30 September 2004, Q4 2004 = 1 October-31 December 2004.

Q1 2005 = 1 January -31 March 2005, Q2 2005 = 1 April -30 June 2005, Q3 2005 = 1 July-30 September 2005.

17. Applications for Child Benefit

- During the period May 2004 to September 2005 44% of applications were approved and 15% were rejected.
- There are cases where an application may be processed in a different month to that in which it was received. This is because once a Child Benefit application is made by an A8 national, the Child Benefit Office makes further enquiries about the applicant's date of arrival in the UK and employment status, in order to ascertain whether or not the applicant passes the right to reside test.
- The total number of children involved in applications approved this quarter was 4,583.

Table 16: Applications for Child benefit (Great Britain and Northern Ireland¹¹). May 2004 – September 2005

	Applications Received	Applications Approved	Applications Rejected	Applications Terminated
Q2 2004	1,161	190	30	0
Q3 2004	1,628	828	441	1
Q4 2004	2,300	1,068	436	6
Q1 2005	3,059	1,484	362	3
Q2 2005	4,074	1,451	602	1
Q3 2005	6,834	3,466	993	7
TOTAL	19,056	8,487	2,870	18

¹¹ Child Benefit is administered separately in Great Britain and in Northern Ireland.

18. Applications for Tax Credits

- Between May 2004 and September 2005, 56% of applications for tax credits were approved and 12% were rejected.

Table 17: Applications for Tax Credits. May 2004 – September 2005

	Applications Received	Applications Approved	Applications Rejected	Applications Terminated
Q2 2004	80	0	0	0
Q3 2004	234	51	72	0
Q4 2004	626	201	113	0
Q1 2005	1,184	502	126	0
Q2 2005	1,320	1,027	100	0
Q3 2005	1,815	1,179	229	0
TOTAL	5,259	2,960	640	0

Housing and Homelessness support¹²

19. Local Authority Lettings

- The May 2004 to June 2005 total of 58 lettings to A8 nationals represents just 0.04% of the average number of lettings to all new tenants over a typical 14 month period.

Table 18: Local Authority lettings, by reason. England.

	Currently legally employed	Self-employed/ provider of services	Recipient of services	Other	TOTAL
2004 Q2*	0	0	0	2	2
Q3	11	0	0	1	12
Q4	18	0	0	1	19
2005 Q1	9	1	0	0	10
Q2	7	1	0	7	15
TOTAL	45	2	0	11	58

* Please note – 2004 Q2 is May and June. All figures are provisional.

20. Homelessness assistance

- The May 2004 to June 2005 total of 689 decisions on A8 applications for homelessness assistance represents just 0.2% of the average number of homelessness decisions over a typical 14 month period.

Table 19: Decisions on applications for assistance¹³¹⁴. England.

	Main duty owed to Applicant	Applicant not owed a main duty	TOTAL
2004 Q2*	42	122	164
Q3	66	102	168
Q4	70	53	123
2005 Q1	38	88	126
Q2	34	74	108
TOTAL	250	439	689

* Please note – 2004 Q2 is May and June. All Figures are provisional.

¹² Data only available up to June 2005.

¹³ Under the homelessness provisions of the 1985 and 1996 Housing Acts.

¹⁴ 'Main duty owed' means that the local authority is required to secure suitable accommodation for applicant and their household.

Accession Monitoring Report, May 2004 – June 2005

- The May 2004 to June 2005 total of 250 A8 acceptances represents just 0.2% of the average number of acceptances of homelessness applications over a typical 14 month period.

Table 20: Homeless households owed a main duty¹⁵ by reason for eligibility. England.

	Currently legally employed	Self- employed/ provider of services	Recipient of services	Other	TOTAL
2004 Q2*	19	1	2	20	42
Q3	41	1	0	24	66
Q4	63	4	0	3	70
2005 Q1	30	1	0	7	38
Q2	26	1	0	7	34
TOTAL	179	8	2	61	250

* Please note – 2004 Q2 is May and June. All figures are provisional.

¹⁵ 'Main duty owed' means that the local authority is required to secure suitable accommodation for applicant and their household.

Accession Monitoring Report, May 2004 – June 2005

ANNEX A

**All occupations in which registered workers are employed, Total July 2004 to September 2005
(May and June 2004 unavailable).**

Sector	Occupation	TOTAL July 2004 to September 2005
GENERAL	Beautician	95
SERVICES AND	Call centre agent / operator	320
TRADES	Carpenter / joiner	1,270
	Cleaner, domestic staff	11,830
	Electrician	195
	Floorer and wall tiler	70
	Gardener / landscape gardener	870
	Groundsman	270
	Hairdresser or related occupation	180
	Handyman, general (building and contracting)	840
	Launderer, dry cleaner, presser	945
	Mechanic	780
	Packer	15,250
	Painter and decorator	475
	Plasterer	120
	Plumbers, heating and ventilating engineer	110
	Refuse and salvage occupation	290
	Road sweeper	225
	Rofer, roof tiler and slater	60
	Translator	35
	Window cleaner	40
ADMINISTRATION,	Administrator, comms / marketing / advertising	215
BUSINESS &	Administrator, finance	395
MANAGEMENT	Administrator, general	2,325
	Administrator, Human Resources	265
	Administrator, office	1,010
	Administrator, records	155
	Director/Senior executive	80
	Manager, customer care	105
	Manager, financial	90

Accession Monitoring Report, May 2004 – June 2005

	Manager, Human Resources / Training	100
	Manager, office	305
	Manager, quality	70
	Personal assistant	400
	Receptionist (office)	555
	Secretary	180
	Senior manager	30
	Typist	35
AGRICULTURE	Agricultural machinery operator	650
	Animal husbandry	315
	Crop harvester	5,660
	Farm worker/ Farm hand	11,560
	Fisherman	35
	Flower picker	615
	Forestry workers	75
	Fruit picker (farming)	2,685
	Manager, farm	30
ARTS,	Actor	5
ENTERTAINMENT,	Administrator, sports and leisure	80
LEISURE & SPORT	Artist / sculptor	40
	Arts officer, Producers or Director	25
	Author, writer	5
	Camera person / Photographer	20
	Circus performer	15
	Circus rigger	45
	Dancer or choreographer	10
	Entertainer	190
	Fitness coach	50
	Leisure and theme park attendants	1,115
	Leisure and travel service occupations	310
	Lifeguard	45
	Manager, entertainment /arts /leisure	55
	Musicians	40
	Sports and leisure assistants	340
	Sports coach	10
	Sports Manager	†
	Sportsperson (professional)	35
COMPUTER	Administrator, IT	170
	Engineer, hardware (computer)	100

Accession Monitoring Report, May 2004 – June 2005

SERVICES	Engineer, software	140
	IT strategy and planning professionals	65
	Manager, IT	30
	Programmer, computer	130
	Software analyst	65
	Systems analyst	60
CONSTRUCTION & LAND SERVICES	Bricklayer / mason	575
	Civil engineer	130
	Construction materials delivery	80
	Constructor, road	110
	Constructor, roofing	100
	Constructor, steel	280
	Labourer, building	6,095
	Site manager (construction)	50
	Site supervisor (construction)	75
	Skilled machine operator (construction)	395
	Skilled vehicle operator (construction)	45
	Supplier, construction materials	30
EDUCATIONAL & CULTURAL	Administrator, university	35
	Caretaker, school	45
	Caterer, higher education	10
	Caterer, school	30
	Childminders and related occupations	615
	Foreign language teacher (private)	10
	Laboratory assistant	120
	Nursery nurse	200
	Playgroup leader / assistant	120
	Researcher, higher education	155
	School secretary	20
	Teacher, higher education	95
	Teacher, primary and nursery education	45
	Teacher, secondary education	55
	Teacher, special needs education	25
	Teacher's assistant	315
	Tutor (private)	20
EXTRACTION INDUSTRIES	Engineer, oil and natural gas	30
	Site Manager (extraction industry)	5
	Site Supervisor (extraction industry)	5
	Skilled machinery operator (extraction)	240

Accession Monitoring Report, May 2004 – June 2005

	Welder	850
	Worker, gas	5
	Worker, oil	5
FINANCIAL SERVICES	Accountant, certified	15
	Accountant, chartered	5
	Accountant, financial	85
	Accountant, trainee	90
	Actuary	†
	Administrator, financial services	120
	Auditor	20
	Bank Manager	5
	Banker, Business	15
	Banker, International	15
	Banker, Investment	15
	Banker, Personal	5
	Cashier (bank, building society)	60
	Financial Adviser	50
	Financial Consultant	60
	Management Accountant	15
FOOD PROCESSING	Baker	1,005
	Butcher / Meat cutter	930
	Fishmonger / filleter / gutter	450
	Food processing operative (fruit / veg)	4,155
	Food processing operative (meat)	3,350
	Slaughterer, meat	120
GOVERNMENT	Administrator, (government & related)	25
HEALTH & MEDICAL SERVICES	Administrator / receptionist, medical	150
	Administrator, hospital	45
	Alternative/complementary medicine specialist	15
	Anaesthetist	80
	Care assistants and home carers	7,450
	Consultant, hospital	105
	Dental Hygienist	35
	Dental Nurse	160
	Dental practitioner	190
	Dietician	†
	Doctor (hospital)	230
	General Practitioner	45
	Manager, care home	15

Accession Monitoring Report, May 2004 – June 2005

	Manager, health and social services	30
	Midwife	5
	Nurse	115
	Nursing auxiliaries and assistants	225
	Optician	25
	Pharmacist / Pharmacologist	115
	Physiologist	†
	Physiotherapist	30
	Psychiatrist	10
	Psychologist	10
	Researcher (medical)	105
	Residential wardens and Houseparents	85
	Social Worker	150
	Surgeon	30
	Technician, medical	65
	Veterinarian	45
	Ward Sister	5
	Warden (care home)	25
HOSPITALITY & CATERING	Bar staff	4,285
	Chef, head	250
	Chef, other	3,210
	Chef, second	155
	Hotel porter	1,635
	Kitchen and catering assistants	15,290
	Maid / Room attendant (hotel)	8,620
	Manager, bar	65
	Manager, catering	160
	Manager, hotel	100
	Manager, other hospitality	180
	Manager, restaurant	150
	Manager, safety and hygiene	20
	Receptionist, hotel	825
	Waiter, waitress	10,905
LAW RELATED SERVICES	Barrister	10
	Caseworker (legal)	5
	Interpreter	15
	Lawyer / Solicitor	15
	Legal Clerk	20
	Legal secretary	15

Accession Monitoring Report, May 2004 – June 2005

MANUFACTURING	Chemical engineer	55	
	Mechanical engineer	265	
	Process operative (electronic equipment)	955	
	Process operative (other Factory worker)	54,725	
	Process operative (Textiles)	780	
	Process operative (Vehicle manufacturing)	315	
	Production Manager	70	
	Supervisor, production	195	
	Warehouse manager	35	
	Warehouse Supervisor	200	
	Welder	420	
REAL ESTATE & PROPERTY SERVICES	Architect	120	
	Architectural Technician	110	
SERVICES	Property sales and lettings	50	
	Surveyor	50	
RETAIL & RELATED SERVICES	Cashier / check-out operator	865	
	Cold store operative	35	
	Deliveryman	250	
	Manager, retail	155	
	Market and street traders and assistants	25	
	Merchandisers and window dressers	45	
	Purchaser (retail trade)	65	
	Retailer	225	
	Sales and retail assistants	6,545	
	Shelf stacker	175	
	Supervisor, retail	105	
	Telephone salesperson	60	
	Telesales Supervisor	10	
	Warehouse manager	55	
	Warehouse Operative	12,325	
	Warehouse Supervisor	50	
	Wholesaler	15	
	SECURITY AND PROTECTION SERVICES	Detention /Custody guard /officer	5
		Policeman/woman	†
Prison Officer		†	
Secure delivery worker		15	
Security Guard		705	
Supervisor, door /bouncer		20	
	Telecommunications administrator	50	

Accession Monitoring Report, May 2004 – June 2005

TELECOMMUNICATIONS	Telecommunications administrator	50
	Telecommunications Engineer	80
	Telecommunications Manager	†
	Telecommunications Supervisor	5
TRANSPORT	Air Steward / Stewardess	135
	Airport staff	110
	Conductor, railways	†
	Conductor, bus	10
	Dock Worker	30
	Driver, bus	1,285
	Driver, coach	85
	Driver, crane	25
	Driver, delivery van	1,725
	Driver, fork-lift	265
	Driver, HGV (Heavy Goods Vehicle)	2,445
	Driver, PCV (Passenger Carrying Vehicle)	305
	Driver, taxi	40
	Driver, train	†
	Engineer, other transport related	180
	Engineer, railway	30
	Ship hand	20
	Ship's Captain	†
	Steward / Stewardess (ferry/shipping)	25
UTILITIES (Gas, Water & Electricity suppliers)	Ticketeer and station attendants	45
	Administrator (utilities)	20
	Engineer, electrical	60
	Engineer, gas	5
	Engineer, water	5
	Maintenance (electrical)	75
	Maintenance (gas)	10
	Maintenance (water/sewage)	10
	Manager, utilities	10
	Power station staff	15
	Sewage Worker	10
	Supervisor (gas/water/electric)	5
	Water works staff	10
	Not Stated	8,420
TOTAL		238,235