



Home Office

BUILDING A SAFE, JUST
AND TOLERANT SOCIETY

DWP Department for
Work and Pensions

 **HM Revenue
& Customs**



**Office of the
Deputy Prime Minister**

Creating sustainable communities

Accession Monitoring Report

May 2004 – June 2005

A joint online report by the Home Office, the Department for Work and Pensions, the HM Revenue & Customs and the Office of the Deputy Prime Minister.

23 August 2005

INTRODUCTION

BACKGROUND.....	1
KEY FINDINGS.....	1
NOTE ON THE PUBLICATION.....	3
NOTE ON THE WORKER REGISTRATION SCHEME DATA.....	3
TECHNICAL NOTE.....	3

WORKER REGISTRATION SCHEME (WRS)

APPLICANTS AND APPLICATIONS TO THE WRS

1. Applicants.....	4
1.a. Applications.....	6

APPLICANT PROFILE

2. Nationality of applicants.....	7
3. Date applicants last entered the UK.....	8

PROFILE OF REGISTERED WORKERS

4. Age and Gender of registered workers.....	9
5. Dependants of registered workers.....	11
6. Sectors in which registered workers are employed.....	12
7. Occupations in which registered workers are employed.....	14
8. Registered workers' hours of work and wages.....	16
9. Proportion of registered workers in temporary/permanent employment.....	16
10. Geographical distribution of registered workers.....	17
11. Geographical distribution of registered workers by sector.....	19
12. Nationality of registered workers by sector.....	22

NATIONAL INSURANCE NUMBERS

13. National Insurance Numbers allocated and purpose of allocation.....	24
14. National Insurance Number applications by region.....	25

BENEFITS

15. Applications for tax-funded, income-related benefits.....	26
16. Nationality of applicants for tax-funded, income-related benefits.....	27
17. Applications for tax-funded, income-related benefits by region.....	27
18. Applications for Child Benefit.....	28
19. Applications for Tax Credits.....	29

HOUSING AND HOMELESSNESS SUPPORT

20. Local Authority Lettings.....	30
21. Homelessness assistance.....	30

ANNEX A All occupations in which registered workers are employed.....	32
---	----

INTRODUCTION

Background

On 1 May 2004, ten countries joined the European Union (EU). Those countries are: Cyprus; the Czech Republic; Estonia; Hungary; Latvia; Lithuania; Malta; Poland; Slovakia; and Slovenia. From that date, nationals of Malta and Cyprus have had full free movement rights and rights to work, throughout the European Union. Prior to enlargement, existing EU member states had the right to regulate access to their labour markets by nationals of the other eight countries – the ‘Accession 8’ or ‘A8’. The UK Government put in place transitional measures to regulate A8 nationals’ access to the labour market (via the Worker Registration Scheme) and to restrict access to benefits.

Key Findings

- Nationals from the Accession 8 countries continue to come to the UK to work, contributing to the success of the UK economy, whilst making very few demands of our welfare system or public services.
- In total there were 232 thousand applicants to the Worker Registration Scheme between 1 May 2004 and 30 June 2005, of whom up to 30% may have already been in the UK before 1 May 2004.
- Accession workers are continuing to go where the work is, helping to fill the gaps in our labour market, particularly in administration, business and management, hospitality and catering, agriculture, manufacturing and food, fish and meat processing.
- In many cases Accession nationals are supporting the provision of public services in communities across the UK. Between July 2004 and June 2005, over 3,000 Accession country nationals registered as bus, lorry and coach drivers and almost 5,500 as care workers. There were 560 teachers, researchers and classroom assistants; 290 dental practitioners (including hygienists and dental nurses); and over 300 GPs, hospital doctors, nurses and specialists.
- Just under a fifth of registered workers were based in London. However, workers are based all over the UK the proportion applying to London fell from 26% in Q2 2004 to 13% in the second quarter 2005. At the same time the proportion applying elsewhere has increased particularly the Midlands and the South West.
- 97% of workers were working full time, and over 99% of applications for National Insurance numbers made by Accession country nationals between May 2004 and June 2005 were for employment purposes.

Accession Monitoring Report, May 2004 – June 2005

- The vast majority of workers are young and single, 82% of workers were aged between 18 and 34. 95% of registered workers had no dependants living with them in the UK, and only 2% had dependants under the age of 17 with them.
- The numbers applying for tax-funded income-related benefits, child benefit, tax credits and housing support remain very low. For example, fewer than 1,700 applications for Income Support and Jobseeker's Allowance were processed between May 2004 and June 2005, and of these applications just over 50 were allowed to proceed for further consideration.

Note on the publication

This is the fourth of a series of quarterly reports based on provisional Management Information collected through the Worker Registration Scheme and manual monitoring of applications for National Insurance Numbers, claims for benefits, applications for tax credits and applications for housing and homelessness assistance. The figures published in the earlier reports have been updated to include applications that were previously outstanding. As there are now 1 part quarter (May-June) and 4 whole quarters (July-September, October-December, January-March and April-June) available the data is presented in quarters although for continuity some of the charts are still shown as monthly data.

Note on the Worker Registration Scheme data

Nationals of the A8 countries who wish to take up employment in the UK are generally required to register with the Worker Registration Scheme. The data from the WRS provided here is data on applicants to the scheme rather than applications (with the exception of section 1.a.). Applicants must register more than once if they are employed by more than one employer. They must also re-register if they change employer. Each application to the WRS therefore represents one job, not one applicant. To avoid counting applicants more than once, each applicant is represented only once in this report – with information relating to the first job for which they registered.

Data is provisional and an estimated 920 applications from the period remain outstanding. In these cases final decisions had not been issued at the time of producing this report.

All WRS data in this report is sorted according to the date the applicant applied. The 'date applied' is the date the applicant puts on the application form. There will be cases in which there is a delay between when the forms are filled in or posted and when the applications are received by the Home Office.

Data on applicants to the Worker Registration Scheme (WRS) is not a measurement of net migration to the UK (inflows minus outflows): rather, it gives gross (cumulative) figures for the number of workers applying to the WRS. The figures are not current: an individual who has registered to work and who leaves employment is not required to de-register, so some of those counted will have left the employment for which they registered and indeed some are likely to have left the UK.

Technical Note

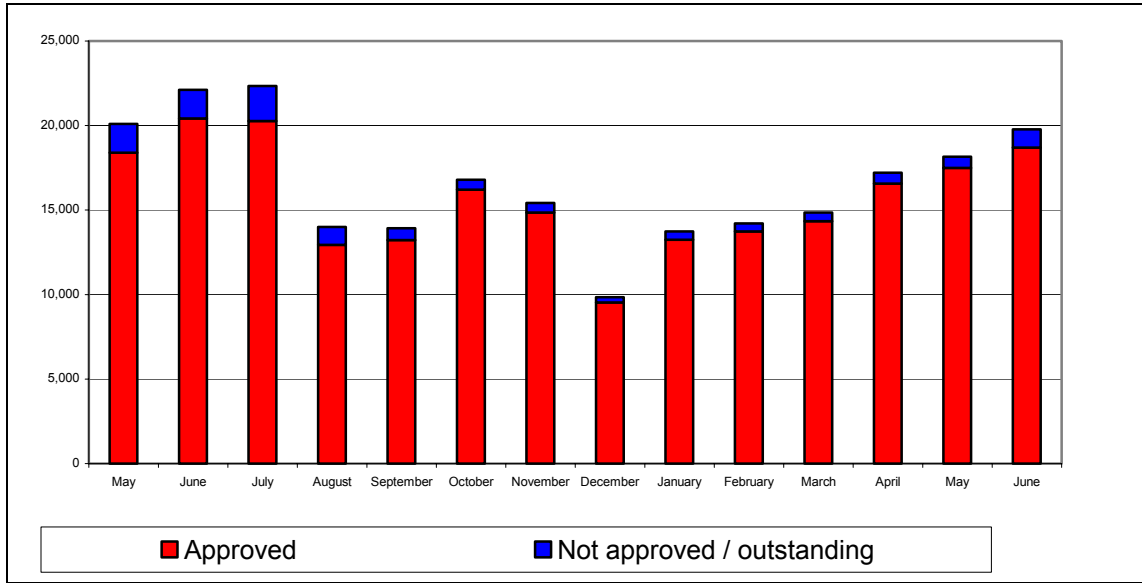
- All Worker Registration Scheme figures (other than percentages) are rounded to the nearest 5.
† indicates 1 or 2.
- Because of rounding, totals may not sum.
- All percentages are calculated from non-rounded figures.
- Q2 2004 is only a part quarter of May and June so care should be taken when comparing this with subsequent quarters.

WORKER REGISTRATION SCHEME (WRS)

Applicants and Applications to the WRS

1. Applicants

Chart 1: Applicants applied by month applied. May 2004 – June 2005



- In total there were 232 thousand applicants from 1 May 2004 to 30 June 2005, 220 thousand of whom were issued with Worker Registration certificates and cards.
- In the first 3 months applications peaked at over 20 thousand per month, it has since fluctuated slightly with a low of around 10 thousand applicants in December. Since then it has increased again towards the summer however the levels in May and June 2005 were lower than in the same months in 2004.

Accession Monitoring Report, May 2004 – June 2005

Table 1: Applicants by quarter applied. May 2004 – June 2005.

	Approved	Refused ¹	Exempt ²	Withdrawn ³	SUB-TOTAL	Estimated Outstanding	TOTAL
Q2 2004	38,820	550	275	2,550	42,195	5	42,200
Q3 2004	46,435	430	275	3,120	50,255	5	50,260
Q4 2004	40,575	270	95	1,105	42,045	5	42,055
Q1 2005	41,325	445	115	850	42,735	70	42,805
Q2 2005	52,750	485	85	995	54,320	830	55,145
TOTAL	219,905	2,180	845	8,615	231,545	920	232,465

This table shows applicants rather than the number of applications made. The figures are for initial applications only (not multiple applications, where an individual is doing more than one job simultaneously, nor re-registrations, where an individual has changed employers).

Note: Please see Introduction: Technical Note on WRS data

¹ 'Refused': Grounds for refusal include no evidence of employment, insufficient evidence of citizenship of one of the A8 countries.

² 'Exempt': Under the Accession (Immigration and Worker Registration) Regulations 2004, certain categories of A8 national are exempt from the requirement to register (e.g. those who have been employed legally in the UK for 12 months or more, without interruption).

³ 'Withdrawn': The applicant withdrew their application.

1.a. Applications

- A total of 276 thousand applications, excluding outstanding applications, were made between May 2004 and June 2005, of which 264 thousand were approved (i.e. the worker's employment was registered).
- The total includes almost 33 thousand applications to re-register (from those who have previously registered but have changed employer), 3 thousand multiple registrations (from those working for more than one employer simultaneously), and almost 10 thousand multiple re-registrations (from those registering for subsequent, additional jobs, or those who have left their employer and are re-registering for more than one job). These applications account for the difference between the number of applicants and the number of applications.
- Over the reporting period, the number of re-registrations has risen from 540 in the part quarter, May and June 2004, to 12,915 in the final quarter. The number of multiple registrations has fallen from 1,075 in the part quarter, May and June 2004, to around 300 in each of the last two quarters.

Table 1.a.: Multiple applications and Re-registrations. May 2004 – June 2005.

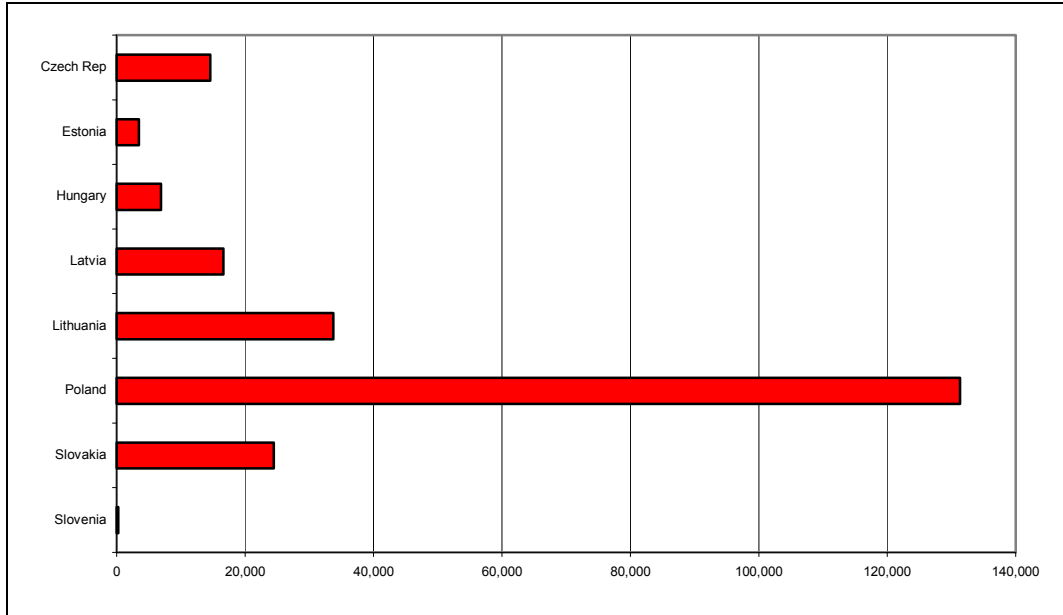
	Multiple	Re-registration	Multiple Re-registration	TOTAL
Q2 2004	1,075	540	920	2,535
Q3 2004	540	2,940	1,350	4,830
Q4 2004	390	6,645	1,580	8,620
Q1 2005	300	9,730	2,390	12,415
Q2 2005	315	12,915	3,320	16,550
TOTAL	2,625	32,765	9,560	44,950

Note: Please see Introduction: Technical Note on WRS data

Applicant Profile

2. Nationality of applicants

Chart 2: Nationality of applicants: May 2004 – June 2005.



- In the period 1 May 2004 to 30 June 2005, the highest proportion of applicants were Polish (57% of the total), followed by Lithuanian (15%) and Slovak (11%) applicants. These proportions have remained roughly constant throughout the period.

Table 2: Nationality of applicants by quarter applied. May 2004 – June 2005.

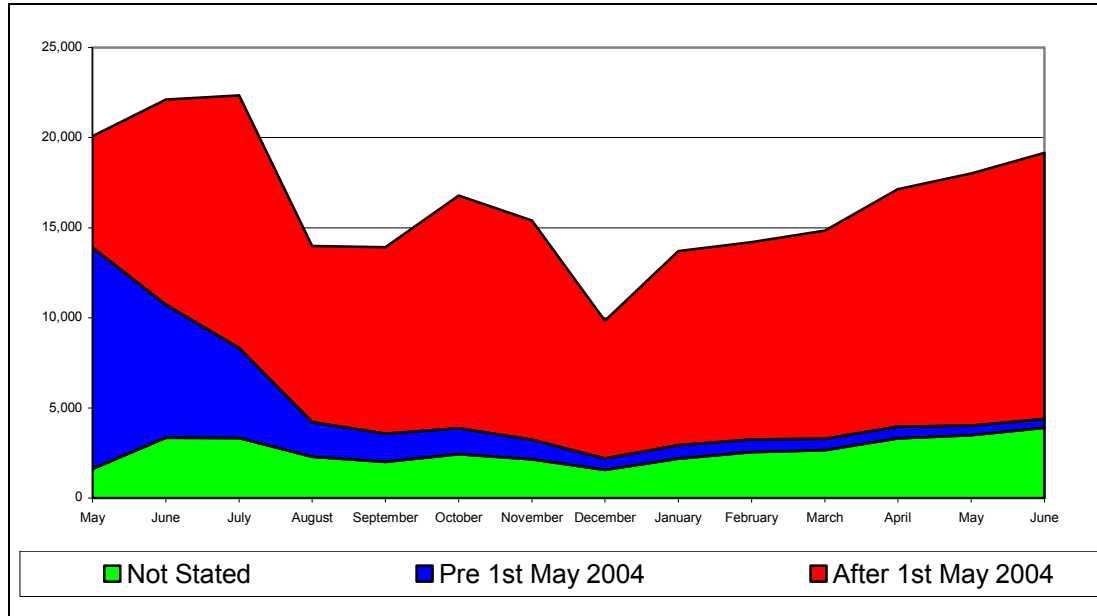
	Czech	Estonian	Hungarian	Latvian	Lithuanian	Polish	Slovak	Slovenian	Other	TOTAL
Q2 2004	2,520	660	1,090	2,935	7,710	23,465	3,730	50	30	42,195
Q3 2004	3,510	770	1,315	3,660	7,590	28,065	5,240	65	40	50,255
Q4 2004	3,020	610	1,430	2,765	5,350	23,915	4,870	55	30	42,045
Q1 2005	2,840	730	1,460	3,125	5,845	23,720	4,930	55	35	42,735
Q2 2005	2,725	710	1,605	4,140	7,260	32,130	5,700	30	30	54,320
TOTAL	14,610	3,480	6,900	16,625	33,755	131,290	24,470	250	165	231,545
As % of Total	6%	2%	3%	7%	15%	57%	11%	<0.5%	<0.5%	100%

This table shows applicants rather than the number of applications made. The figures are for initial applications only (not multiple applications, where an individual is doing more than one job simultaneously, nor re-registrations, where an individual has changed employers).

Note: Please see Introduction: Technical Note on WRS data

3. Date applicants last entered the UK⁴

Chart 3: Date applicants last entered the UK, by month applied. May 2004 – June 2005.



- Between May 2004 and June 2005, 15% of applicants reported that they had entered the UK prior to 1 May 2004. 69% reported that they had entered on or after 1 May, and 16% did not state their arrival date.

Table 3: Date applicants entered UK, by quarter applied. May 2004 – June 2005.

	Pre-2002	2002	2003	Jan-Apr 2004	Post 1 May 2004	Not stated	TOTAL
Q2 2004	1,440	1,655	7,035	9,545	17,560	4,965	42,195
Q3 2004	975	835	3,035	3,645	34,140	7,620	50,255
Q4 2004	525	365	975	1,315	32,735	6,135	42,045
Q1 2005	440	240	655	775	33,240	7,385	42,735
Q2 2005	415	210	570	495	41,940	10,685	54,320
TOTAL	3,795	3,300	12,270	15,775	159,620	36,790	231,545

This table shows applicants rather than the number of applications made. The figures are for initial applications only (not multiple applications, where an individual is doing more than one job simultaneously, nor re-registrations, where an individual has changed employers).

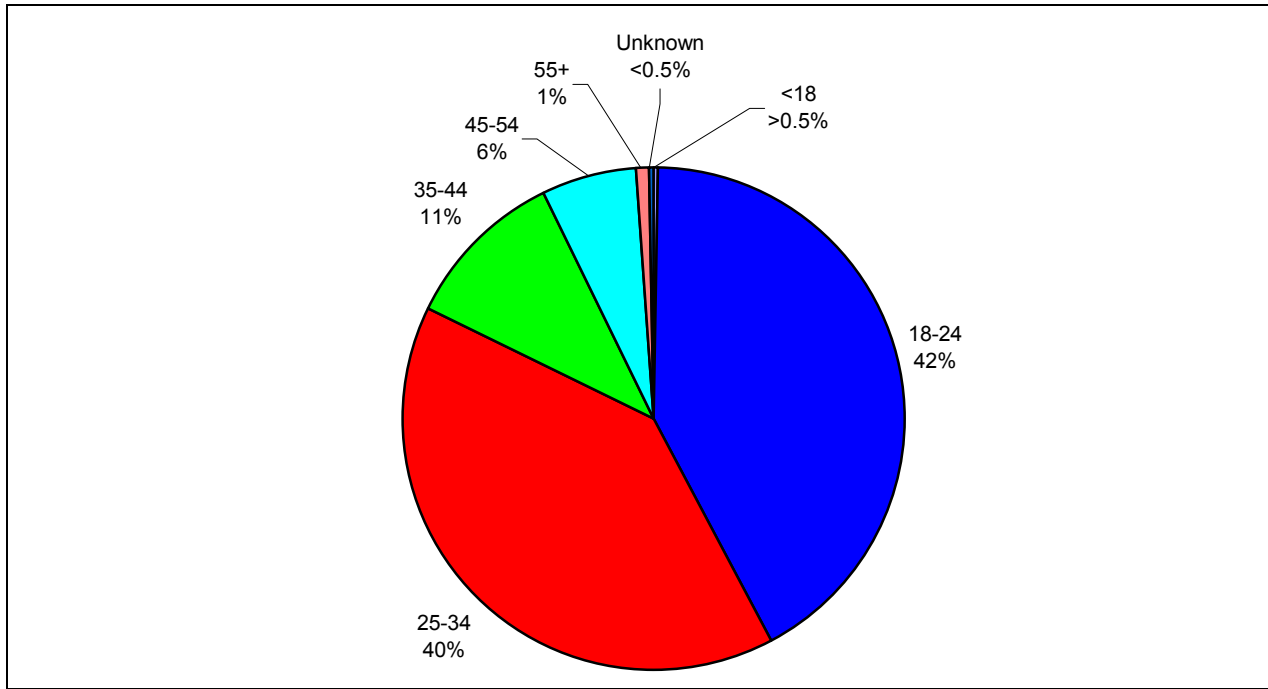
Note: Please see Introduction: Technical Note on WRS data

⁴ This data is derived from applicants' responses to the question on the WRS application form: "When did you last enter the UK?" The Home Office does not verify these responses.

Profile of Registered Workers

4. Age and Gender of registered workers

Chart 4: Age of registered workers. May 2004 – June 2005.



- Of those who applied between May 2004 and June 2005, 82% of registered workers were aged 18 – 34. This percentage has been fairly consistent across the period, although there were more people in the younger 18-24 bracket during the summer months of June to August.

Table 4: Age of registered workers. May 2004 – June 2005.

	Q2 2004	Q3 2004	Q4 2004	Q1 2005	Q2 2005	TOTAL	As % of total
Under 18	100	140	80	100	175	595	<0.5%
18-24	16,155	21,960	16,230	15,890	22,275	92,505	42%
25-34	16,160	17,030	16,630	17,215	20,895	87,930	40%
35-44	3,740	4,385	4,515	4,915	5,720	23,275	11%
45-54	2,250	2,510	2,660	2,775	3,215	13,405	6%
55-64	335	325	355	355	380	1,755	1%
65 +	5	5	10	10	5	30	<0.5%
Unknown	80	80	100	70	80	410	<0.5%
TOTAL	38,820	46,435	40,575	41,325	52,750	219,905	100%

This table shows registered workers rather than the number of applications made. The figures are for initial applications only (not multiple applications, where an individual is doing more than one job simultaneously, nor re-registrations, where an individual has changed employers).

Note: Please see Introduction: Technical Note on WRS data

Accession Monitoring Report, May 2004 – June 2005

- The Male:Female ratio for those who applied between May 2004 and June 2005 was 57:43. However this proportion has increased from a ratio of 53:47 in the first quarter after accession to 60:40 in the second quarter of 2005.

5. Dependants of registered workers⁵

- A very small minority (5%) of registered workers who applied between May 2004 and June 2005 had dependants living with them in the UK. Amongst those who did have dependants, the average number of dependants was 1.3.
- The number of dependants as a proportion of the number of registered workers has remained roughly consistent throughout the period.

Table 5: Registered workers' dependants, May 2004 – June 2005.

	Total registered workers	Registered workers with dependants	Number of dependants		
			Under 17	17 and over	TOTAL
Q2 2004	38,820	1,905	1,345	1,125	2,470
Q3 2004	46,435	2,155	1,465	1,320	2,785
Q4 2004	40,575	2,580	1,635	1,625	3,260
Q1 2005	41,325	2,405	1,600	1,475	3,080
Q1 2005	52,750	2,800	1,855	1,775	3,630
TOTAL	219,905	11,850	7,905	7,320	15,225

This table shows registered workers rather than the number of applications made. The figures are for initial applications only (not multiple applications, where an individual is doing more than one job simultaneously, nor re-registrations, where an individual has changed employers).

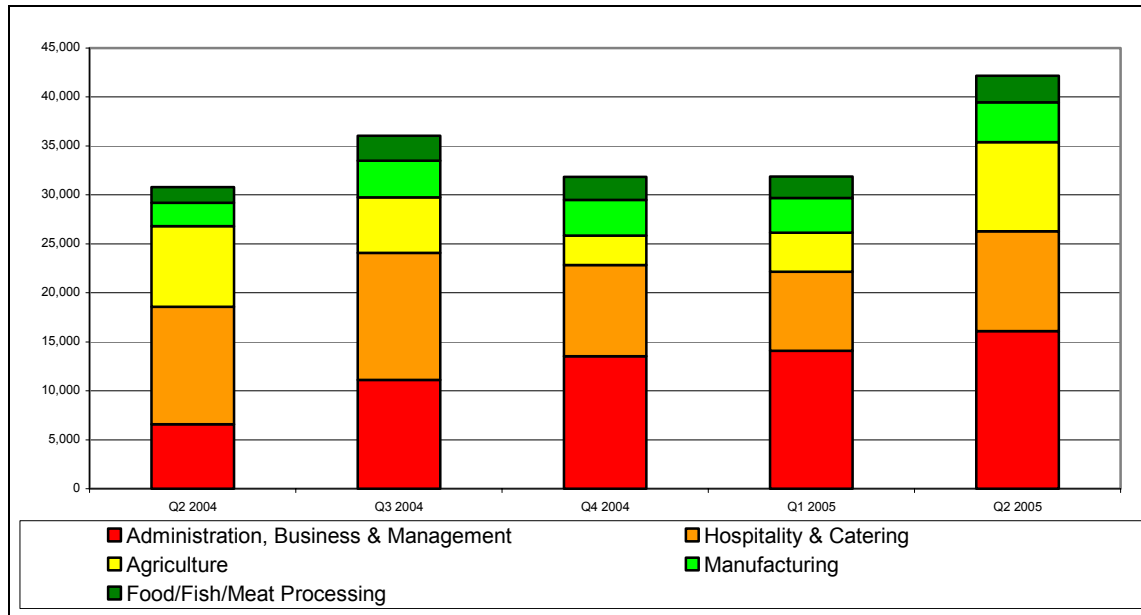
Note: it is likely that there is some 'double counting' of dependants, in the sense that some of those recorded as dependants (particularly older children and spouses) may also have registered in their own right to work in the UK.

Note: Please see Introduction: Technical Note on WRS data

⁵ This data is derived from applicants' responses to the question on the WRS application form: "If your dependants (children and/or spouse or partner) are living with you in the UK, how many of them are: Aged 16 or under?" and "Aged 17 or above?" The Home Office does not verify these responses.

6. Sectors in which registered workers are employed

Chart 5: Top 5 sectors in which registered workers are employed, by quarter applied. May 2004 – June 2005.



- The top five sectors, for registered workers who applied between May 2004 to June 2005, were Administration, Business & Management (28%), Hospitality & Catering (24%), Agriculture (14%), Manufacturing (8%) and Food, Fish and Meat Processing (5%).
- Administration, Business & Management has overtaken Hospitality & Catering as the sector that employs the most accession workers. The proportion of workers in the Administration, Business & Management sector increased from 17% in Q2 2004 to 31% in the latest quarter. Meanwhile, the proportion in Hospitality and Catering fell from 31% in Q2 2004 to just 20% in the latest two quarters.
- Agriculture is the other sector where there has been a considerable change over the period reflecting the seasonal nature of the work. The proportion of workers who were employed in Agriculture peaked in Q2 2004 at 21% before falling to 7% in Q4 2004 and then gradually rising to 17% in the last quarter.

Accession Monitoring Report, May 2004 – June 2005

Table 6: Sectors in which registered workers are employed, by quarter applied. May 2004 – June 2005.

	Q2 2004	Q3 2004	Q4 2004	Q1 2005	Q2 2005	TOTAL
Administration, Business & Management	6,590	11,105	13,525	14,080	16,090	61,385
Hospitality & Catering	12,000	12,980	9,325	8,065	10,210	52,580
Agriculture	8,240	5,655	3,000	3,990	9,085	29,970
Manufacturing	2,360	3,750	3,640	3,540	4,095	17,380
Food/Fish/Meat Processing	1,590	2,545	2,345	2,205	2,700	11,385
Health & Medical	1,170	2,220	2,160	2,290	2,495	10,340
Retail	1,540	1,950	1,855	1,810	2,050	9,210
Construction & Land	1,710	1,995	1,480	1,605	1,820	8,610
Transport	600	910	1,210	1,49	1,740	5,960
Entertainment & Leisure	790	950	450	885	1,170	4,245
Education & Cultural	460	545	490	440	460	2,385
Real Estate & Property	155	205	170	240	230	1,000
Financial Services	135	160	130	115	105	645
Computer Services	130	120	135	100	90	580
Extraction Industries	75	145	145	85	105	560
Security & Protection	95	115	130	100	105	550
Telecommunications	55	60	60	80	30	285
Sporting Activities	45	60	45	40	15	200
Utilities (Gas, Electricity, Water)	35	50	40	35	35	195
Government	20	30	25	25	30	130
Law-related Services	35	30	25	20	15	120
Not Stated	990	850	190	85	75	2,185
TOTAL	38,820	46,435	40,575	41,325	52,750	219,905

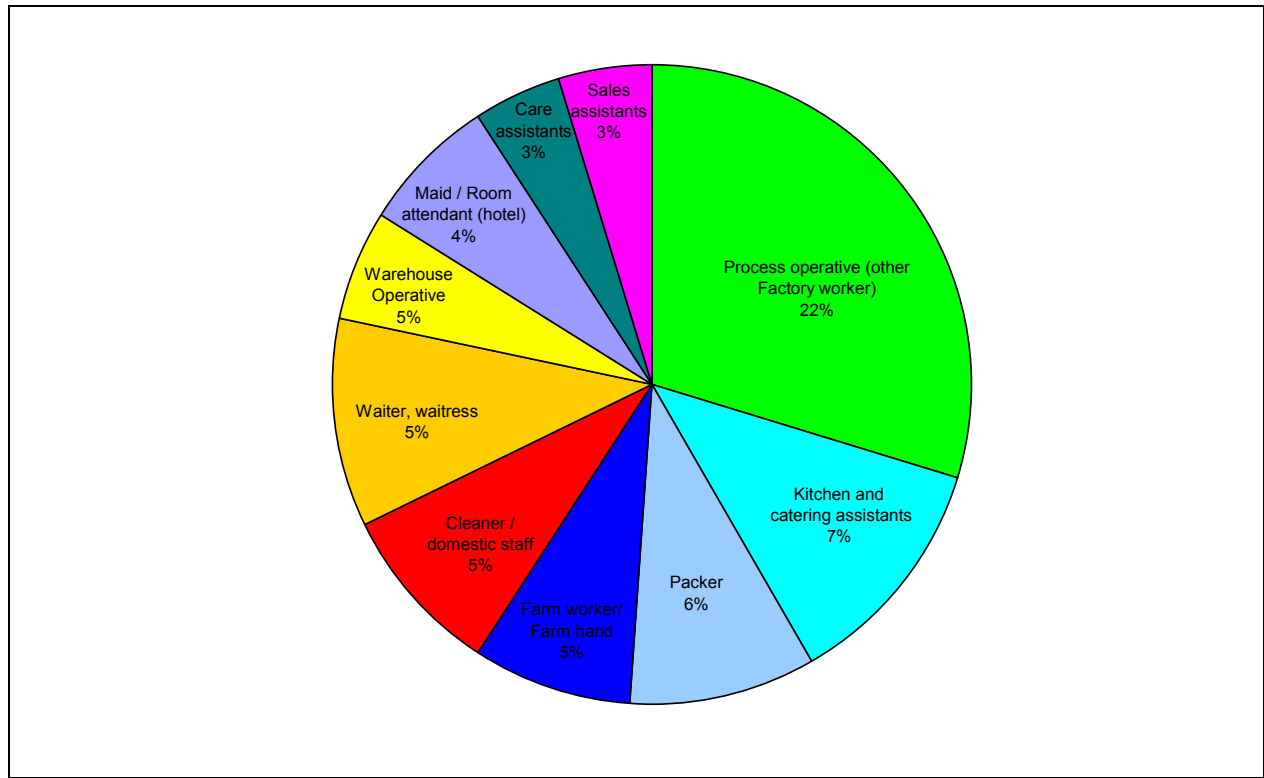
This table shows registered workers rather than the number of applications made. The figures are for initial applications only (not multiple applications, where an individual is doing more than one job simultaneously, nor re-registrations, where an individual has changed employers).

Note: Please see Introduction: Technical Note on WRS data

7. Occupations in which registered workers are employed

Chart 6: Top 10 occupations in which registered workers are employed. July 2004 – June 2005.

(May/June 2004 data not available)



Note: Percentages indicate percentage of all workers registered, July 2004 to June 2005

- The top 20 occupations have remained largely consistent over the period.
- The largest proportion of workers (22%) are in general occupations classified as Process operatives other factory worker). This is followed by Kitchen and catering assistants (7%) and Packers (6%).
- Please refer to **Annex A** for a full table of occupations of registered workers who applied between July 2004 and June 2005.

Accession Monitoring Report, May 2004 – June 2005

Table 7: Top 20 occupations in which registered workers are employed, by quarter applied.
July 2004 – June 2005 (May/June 2004 not available)

	Q3 2004	Q4 2004	Q1 2005	Q2 2005	Total
Process operative (other Factory worker)	8,135	9,825	9,935	12,380	40,270
Kitchen and catering assistants	3,24	2,690	2,455	3,405	11,800
Packer	2,610	2,900	3,035	3,105	11,650
Farm worker/ Farm hand	2,215	1,130	1,705	4,095	9,145
Cleaner, domestic staff	2,340	2,015	2,130	2,410	8,895
Waiter, waitress	2,910	2,070	1,700	1,980	8,660
Warehouse Operative	1,505	2,305	2,430	2,365	8,605
Maid / Room attendant (hotel)	1,865	1,505	1,300	1,835	6,510
Care assistants and home carers	1,215	1,360	1,375	1,535	5,485
Sales and retail assistants	1,325	1,215	1,105	1,320	4,965
Labourer, building	1,170	910	1,135	1,370	4,585
Crop harvester	955	280	610	2,165	4,010
Bar staff	1,150	795	660	790	3,395
Food processing operative (fruit / veg)	805	795	705	945	3,245
Food processing operative (meat)	805	720	560	630	2,715
Chef, other	800	580	545	610	2,535
Driver, HGV (Heavy Goods Vehicle)	300	435	570	615	1,920
Administrator, general	540	460	400	445	1,845
Fruit picker (farming)	450	100	125	1,135	1,805
Driver, delivery van	265	320	340	395	1,315
TOTAL 20	34,590	32,415	32,815	43,525	143,350
Total other	11,845	8,160	8,510	9,220	37,735
GRAND TOTAL	46,435	40,575	41,325	52,750	181,085

This table shows registered workers rather than the number of applications made. The figures are for initial applications only (not multiple applications, where an individual is doing more than one job simultaneously, nor re-registrations, where an individual has changed employers).

Note: Please see Introduction: Technical Note on WRS data

8. Registered workers' hours of work⁶ and wages⁷

- 97% of registered workers who applied between May 2004 and June 2005 were working full time (more than 16 hours a week)⁸.
- The vast majority (80%) of registered workers were earning £4.50 - £5.99 per hour.

9. Proportion of registered workers in temporary/permanent employment⁹

- For those who applied in the period from May 2004 to June 2005, 47% of registered workers were in temporary employment and 50% were in permanent employment (3% did not provide this information).
- The proportion of registered workers employed on a temporary or permanent basis varied considerably from sector to sector. In Agriculture, 67% were in temporary employment and 29% in permanent employment. In Administration, Business and Management, 82% were in temporary employment and 15% in permanent employment. In Hospitality and Catering the pattern was reversed, with only 20% in temporary employment and 77% in permanent employment.

⁶ This data is derived from applicants' responses to the question on the WRS application form: "How many hours per week do you normally work?" The Home Office does not verify these responses.

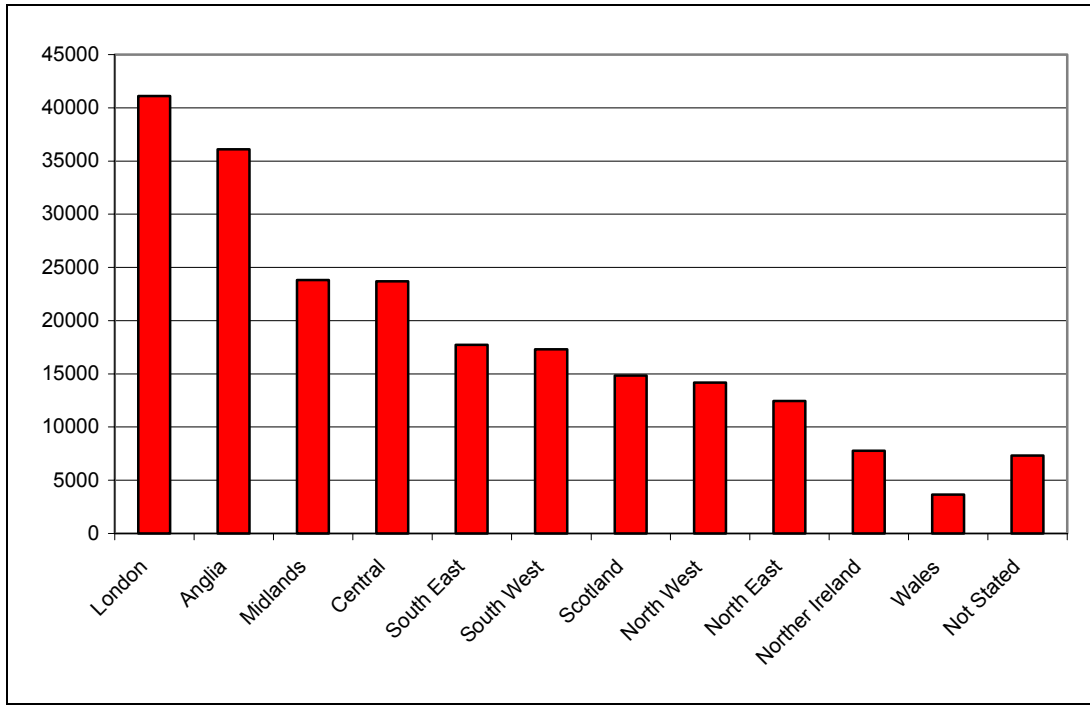
⁷ This data is derived from applicants' responses to the question on the WRS application form: "How much is your hourly rate, before deductions?" The Home Office does not verify these responses.

⁸ The 96% is likely to be an underestimate. The proportion of registered workers working part time is likely to be lower than 4%, because some were doing more than one part time job, simultaneously. The data published here only takes account of one of those jobs – so the total hours an individual was working will in some cases be more than 16.

⁹ This data is derived from applicants' responses to the question on the WRS application form: "What type of employment are you undertaking? (Please indicate by ticking the appropriate box)." The Home Office does not verify these responses.

10. Geographical distribution of registered workers¹⁰

Chart 7: Geographical distribution of registered workers. May 2004 – June 2005.



- London has had the greatest number of workers registering during the May 2004 to June 2005 period with 19% of the total. This is followed by the Anglia and the Midlands Regions with 16% and 11% of the total respectively.
- Northern Ireland and Wales had the fewest registrations with 4% and 2% of the total respectively.
- The proportion applying to London however fell from 26% in Q2 2004 to just 13% in Q2 2005. At the same time the proportion and number applying elsewhere has increased particularly the Midlands and South West.

¹⁰ Regions are based on the applicant's employer's postcode, where supplied. Regions are defined according to the Post Office's Postal Address Book regions.

Accession Monitoring Report, May 2004 – June 2005

Table 8: Geographical distribution of registered workers. May 2004 – March 2005.

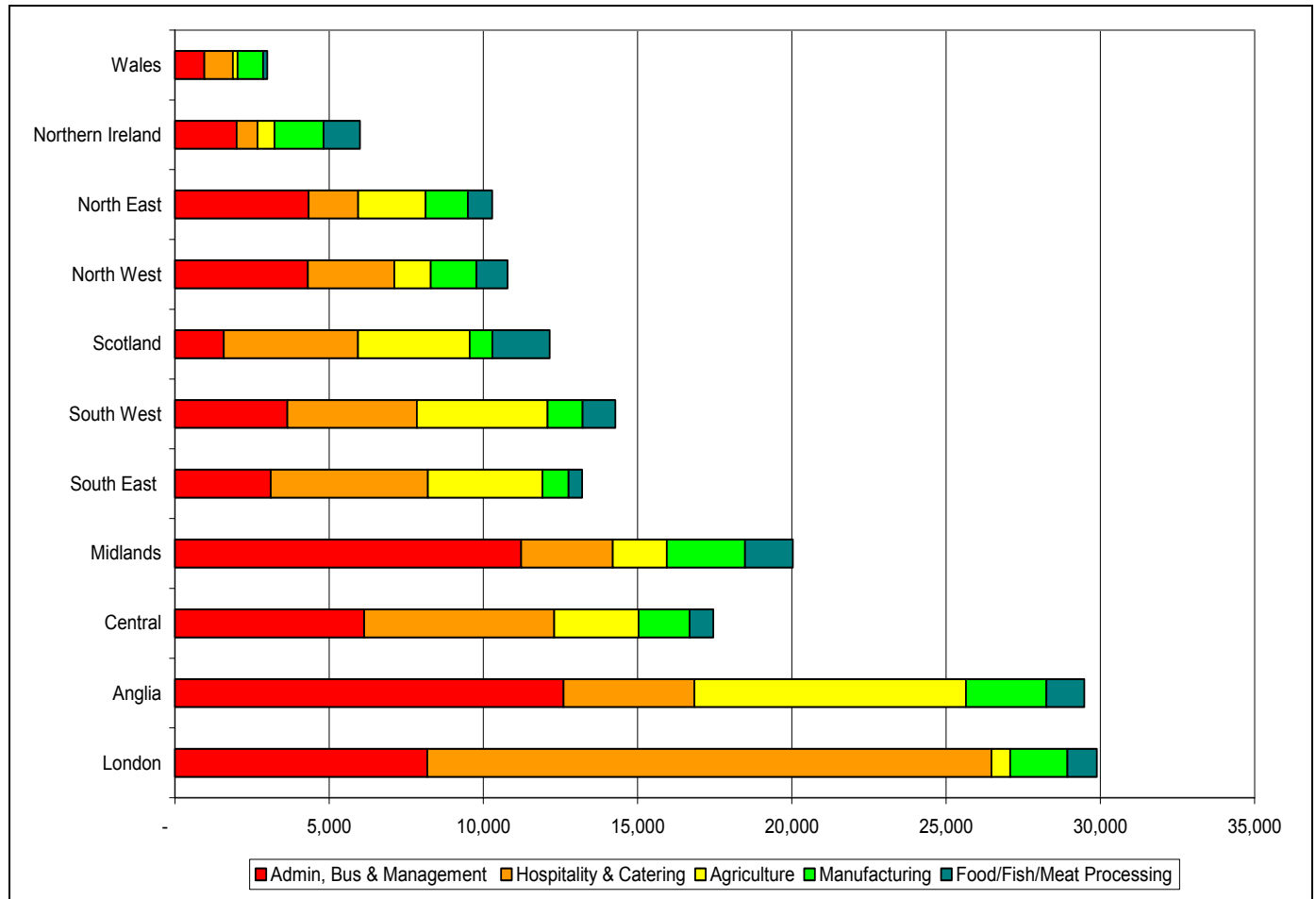
	Q2 2004	Q3 2004	Q4 2004	Q1 2005	Q2 2005	TOTAL
London	9,985	9,880	7,795	6,780	6,665	41,105
Anglia	7,950	7,855	6,095	6,065	8,120	36,085
Midlands	2,930	4,225	4,550	5,630	6,460	23,795
Central	4,840	4,790	4,260	4,520	5,285	23,690
South East	3,930	4,350	2,915	2,705	3,825	17,730
South West	2,485	3,550	2,970	3,275	5,015	17,300
Scotland	2,250	3,255	2,640	2,280	4,415	14,845
North West	1,390	2,825	2,685	3,050	4,245	14,190
North East	1,175	2,330	2,620	2,840	3,490	12,450
Northern Ireland	745	1,340	1,570	1,830	2,270	7,755
Wales	450	595	635	870	1,095	3,645
Not Stated	700	1,440	1,845	1,480	1,865	7,325
TOTAL	38,820	46,435	40,575	41,325	52,750	219,905

This table shows registered workers rather than the number of applications made. The figures are for initial applications only (not multiple applications, where an individual is doing more than one job simultaneously, nor re-registrations, where an individual has changed employers).

Note: Please see Introduction: Technical Note on WRS data

11. Geographical distribution of registered workers by sector¹¹

Chart 8: Top 5 sectors – geographical distribution of registered workers. Cumulative total, May 2004 – June 2005.



Trends within sectors

- 35% of those working in Hospitality and Catering were in London – far more than in any other region. The next highest proportions were working in South Central England and the South East (12% and 10% respectively).
- 29% of those working in Agriculture were in Anglia, followed by the South West (14%), whereas only 2% of Agriculture workers were in London.
- 21% of those working in Administration, Business and Management were in Anglia, 18% were in the Midlands and 13% were in London.

¹¹ Regions are based on the applicant's employer's postcode, where supplied. Regions are defined according to the Post Office's Postal Address Book regions.

Trends within regions

- 44% of those located in London were working in Hospitality and catering, and 29% of those working in Scotland, but only 12% in Anglia and 9% in Northern Ireland.
- 47% of those located in the Midlands were working in Administration, Business and Management, as were 35% of those in Anglia, but only 18% in the South East and 11% in Scotland.
- Other noticeable trends include 24% of those in Anglia and the South West working in Agriculture, and 23% of those in Wales working in Manufacturing.

Accession Monitoring Report, May 2004 – June 2005

Table 9: Top 10 sectors – geographical distribution of registered workers. Cumulative total, May 2004 – June 2005.

	London	Anglia	Central	Midlands	South East	South West	Scotland	North West	North East	Northern Ireland	Wales	Unknown*	TOTAL
Admin, Bus & Management	8,180	12,605	6,135	11,225	3,110	3,650	1,585	4,310	4,335	2,005	960	3,285	61,385
Hospitality & Catering	18,285	4,240	6,155	2,975	5,095	4,190	4,350	2,805	1,605	670	915	1,295	52,580
Agriculture	610	8,800	2,745	1,755	3,710	4,240	3,625	1,180	2,185	555	155	415	29,970
Manufacturing	1,855	2,605	1,650	2,525	850	1,140	735	1,480	1,380	1,585	825	755	17,380
Food/Fish/Meat Processing	960	1,230	770	1,555	445	1,055	1,860	1,005	780	1,180	140	405	11,385
Health and Medical	1,730	1,385	1,575	590	1,330	915	755	575	700	280	220	285	10,340
Retail	3,095	1,595	1,015	700	790	390	290	485	265	245	75	275	9,210
Construction and Land	1,630	945	1,295	560	750	430	815	720	390	815	70	185	8,610
Transport	770	1,020	550	945	470	420	270	745	335	225	60	140	5,960
Entertainment and Leisure	980	455	605	340	360	420	160	515	180	30	125	80	4,245
TOTAL TOP TEN	38,095	34,880	22,500	23,165	16,905	16,850	14,435	13,820	12,150	7,595	3,550	7,115	211,065
Total (Others/Unknown)	3,005	1,205	1,190	630	825	450	410	365	300	160	95	215	8,845
GRAND TOTAL	41,105	36,085	23,690	23,795	17,730	17,300	14,845	14,190	12,450	7,755	3,645	7,325	219,905

This table shows registered workers rather than the number of applications made. The figures are for initial applications only (not multiple applications, where an individual is doing more than one job simultaneously, nor re-registrations, where an individual has changed employers).

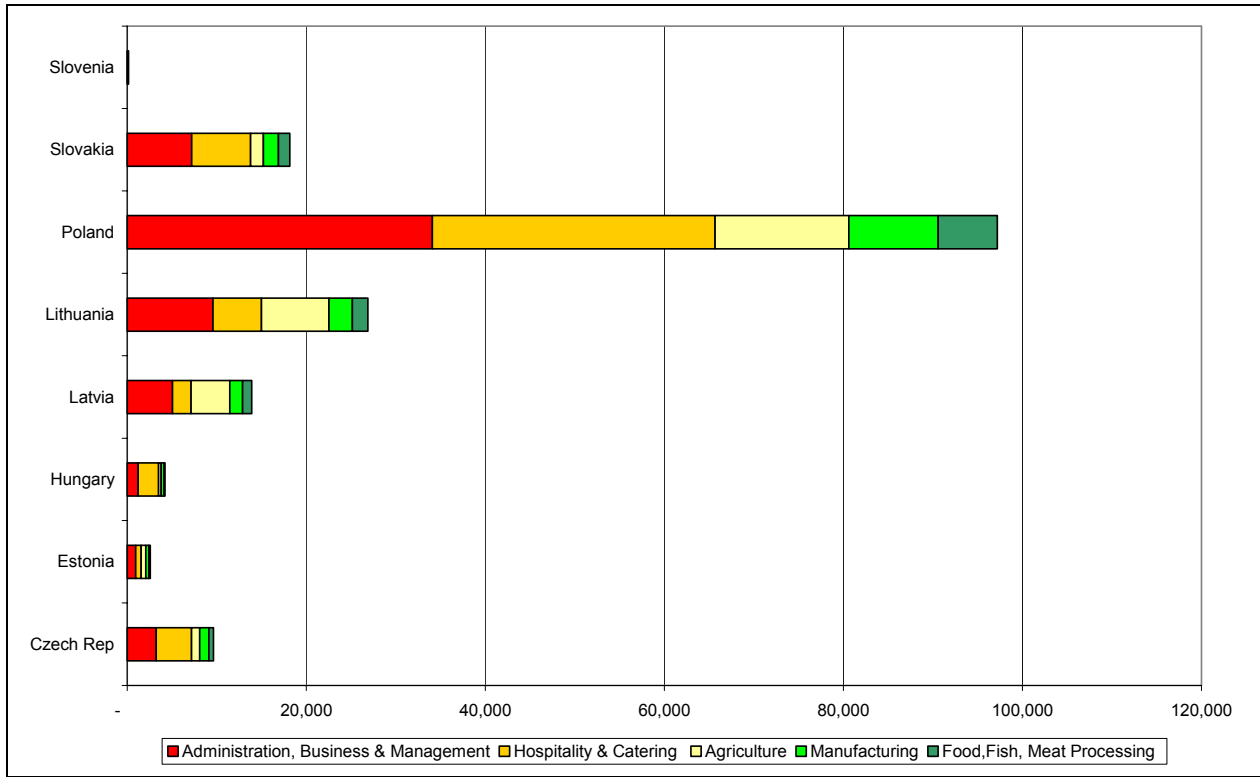
**Postcode not supplied*

Note: Regions are defined according to the Post Office's Postal Address Book regions. Data is based on employer's postcode, where supplied.

Note: Please see Introduction: Technical Note on WRS data

12. Nationality of registered workers by sector

Chart 9: Top 5 sectors – Nationality of registered workers. Cumulative total, May 2004 – June 2005.



- Polish workers made up the largest proportion in every sector. Especially hospitality and catering where 60% of all workers were from Poland this compares to 57% of workers in all sectors.
- A greater proportion of workers from Lithuania and Latvia worked in Agriculture than any other nationality. 24% of Lithuanians and 28% of Latvians worked in Agriculture compared to just 14% of all workers.

Accession Monitoring Report, May 2004 – June 2005

Table 10: Top 10 sectors – nationality of registered workers. Cumulative total, May 2004 – June 2005.

	Czech Rep	Estonia	Hungary	Latvia	Lithuania	Poland	Slovakia	Slovenia	TOTAL
Administration, Business & Management	3,255	955	1,210	5,060	9,570	34,090	7,210	40	61,390
Hospitality & Catering	3,940	615	2,290	2,080	5,445	31,560	6,565	85	52,580
Agriculture	920	505	300	4,325	7,515	14,975	1,430	†	29,970
Manufacturing	1,010	350	325	1,430	2,615	9,950	1,680	20	17,380
Food, Fish, Meat Processing	530	150	90	1,005	1,735	6,605	1,265	5	11,385
Health & Medical	880	190	535	250	715	6,330	1,430	15	10,340
Retail	780	125	430	375	900	5,405	1,180	20	9,210
Construction & Land	530	110	245	535	1,470	5,060	660	†	8,610
Transport	415	80	325	115	410	4,235	365	10	5,960
Entertainment & Leisure	410	55	285	200	470	2,240	580	10	4,245
TOTAL TOP TEN	12,665	3,135	6,025	15,375	30,850	120,450	22,370	200	211,070
Total (other / unknown)	940	125	570	320	775	5,115	965	35	8,845
GRAND TOTAL	13,605	3,260	6,595	15,695	31,625	125,560	23,335	235	219,905

This table shows registered workers rather than the number of applications made. The figures are for initial applications only (not multiple applications, where an individual is doing more than one job simultaneously, nor re-registrations, where an individual has changed employers).

Note: Please see Introduction: Technical Note on WRS data

National Insurance Numbers

13. National Insurance Numbers allocated and purpose of allocation

- Between May 2004 and June 2005, the total number of National Insurance Number allocations increased each quarter to a total of 55,623 in the latest quarter.
- Some 99% of National Insurance Numbers were allocated for employment purposes, 0.8% for benefit purposes and 0.6% for tax credit purposes.
- For the period 1st May 2004 to 29th June 2005, 56% of applicants were male and 44% were female. The percentage of 18-34 year olds was some 82%.

Table 11: National Insurance Numbers allocated and refused. May 2004 – June 2005.

	Total Allocated	Allocated for employment purposes	Allocated for benefit purposes	Allocated for tax credit purposes	TOTAL REFUSED
Q2 2004	7,946	7,806	83	57	220
Q3 2004	22,883	22,532	212	139	686
Q4 2004	32,650	32,201	293	156	705
Q1 2005	46,394	45,833	297	264	588
Q2 2005	55,623	54,812	495	316	588
TOTAL	165,496	163,184	1,380	932	2,787

*Note: * Reporting periods are: 1 May--30 June, 1 July-29 September, 30 September-29 December 2004, 30 December 2004 -30 March 2005, 31 March -29 June 2005.*

14. National Insurance Number applications by region

Table 12: National Insurance Numbers allocated and refused by region, May 2004 to June 2005

	Q2 2004	Q3 2004	Q4 2004	Q1 2005	Q2 2005	TOTAL
London	3,733	7,726	9,357	11,645	15,241	47,702
South East	1,366	3,432	5,847	5,333	6,984	22,962
East of England	678	2,340	4,157	5,829	6,301	19,305
East Midlands	354	1,892	2,545	4,293	5,004	14,088
Scotland	441	1,732	1,528	3,610	4,710	12,021
North West	445	1,460	2,198	4,134	3,754	11,991
West Midlands	235	1,541	2,251	3,198	4,003	11,228
South West	368	1,360	2,472	3,371	3,440	11,011
Yorkshire and Humber	174	872	1,421	2,976	3,706	9,149
Wales	141	699	765	1,498	1,614	4,717
North East	75	219	275	474	614	1,657
Fast-track claims**	156	296	539	621	840	2,452
TOTAL	8,166	23,569	33,355	46,982	56,211	168,283

*Note: * Reporting periods are: 1 May--30 June, 1 July-29 September, 30 September-29 December 2004, 30 December 2004 -30 March 2005, 31 March -29 June 2005.*

***Fast-track applications relate to highly skilled / specialist employment only. Specific regions are unknown.*

Benefits

15. Applications for tax-funded, income-related benefits

- Table 13 below shows applications for income-based Jobseeker’s Allowance, Income Support and State Pension Credit.
- Between May 2004 and June 2005, there were 477 applications for Income Support, 1,198 applications for income-based Jobseeker’s Allowance and 16 applications for State Pension Credit.
- Only 38 of these applications were allowed on initial decision to proceed for further consideration of whether the claimants meet the other conditions of entitlement. In addition to these, 13 applications were allowed on re-consideration / appeal.
- In all, so far only 3% of applications have been allowed and the vast majority (97%) were disallowed on the basis of the Right to Reside and Habitual Residence Tests.

Table 13: Applications for tax-funded, income-related benefits. May 2004 – June 2005

	Q2 2004	Q3 2004	Q4 2004	Q1 2005	Q2 2005	TOTAL
Applications for Income Support						
Disallowed*	43	60	101	134	123	461
Allowed to proceed for further processing	0	3	2	7	4	16
TOTAL	43	63	103	141	127	477
Applications for income-based Jobseeker’s Allowance						
Disallowed*	191	162	184	268	358	1,163
Allowed to proceed for further processing	6	8	4	5	12	35
TOTAL	197	170	188	273	370	1,198
Applications for State Pension Credit						
Disallowed*	0	1	3	7	5	16
Allowed to proceed for further processing	0	0	0	0	0	0
TOTAL	0	1	3	7	5	16
Total disallowed*	234	223	288	409	486	1,640
Total allowed to proceed for further processing	6	11	6	12	16	51
TOTAL	240	234	294	421	502	1,691

**on the Right to Reside and Habitual Residence tests*

16. Nationality of applicants for tax-funded, income-related benefits

- In the period May 2004 – June 2005, most applications were from Polish (37%) and Czech nationals (23%).

Table 14: Applications for tax-funded, income-related benefits by nationality. May 2004 – June 2005

	Q2 2004	Q3 2004	Q4 2004	Q1 2005	Q2 2005	TOTAL
Czech Rep	112	70	64	64	79	389
Estonia	8	7	8	14	11	48
Hungary	1	3	19	18	34	75
Latvia	10	18	14	29	51	122
Lithuania	23	27	34	52	75	211
Poland	67	83	112	166	198	626
Slovakia	18	22	42	77	53	212
Slovenia	1	4	1	1	1	8
TOTAL	240	234	294	421	502	1,691

17. Applications for tax-funded, income-related benefits by region

Table 15: Applications for tax-funded, income-related benefits by region. May 2004 – June 2005

	Q2 2004	Q3 2004	Q4 2004	Q1 2005	Q2 2005	TOTAL
London	57	78	99	108	168	510
North West	45	35	45	52	79	256
Yorks & Humber	21	26	22	73	41	183
South East	43	19	23	28	40	153
West Midlands	14	6	27	30	53	130
East of England	10	16	18	37	35	116
Scotland	8	15	15	24	30	92
East Midlands	5	12	15	28	21	81
North East	19	13	17	10	13	72
South West	11	9	2	21	13	56
Wales	7	5	11	10	9	42
TOTAL	240	234	294	421	502	1,691

18. Applications for Child Benefit

- During the period May 2004 to June 2005 41% of applications were approved and 15% were rejected.
- There are cases where an application may be processed in a different month to that in which it was received. This is because once a Child Benefit application is made by an A8 national, the Child Benefit Office makes further enquiries about the applicant’s date of arrival in the UK and employment status, in order to ascertain whether or not the applicant passes the right to reside test.
- Of the 2,063 Child Benefit applications received where enquiry forms have been returned this quarter, 994 were from customers who arrived in the UK before 1 May 2004.
- The total number of children involved (of applications approved) was 2,177.

Table 16: Applications for Child benefit (Great Britain and Northern Ireland¹²). May 2004 – June 2005

	Applications Received	Applications Approved	Applications Rejected	Applications Terminated
Q2 2004	1,161	190	30	0
Q3 2004	1,628	828	441	1
Q4 2004	2,300	1,068	436	6
Q1 2005	3,059	1,484	362	3
Q2 2005	4,074	1,451	602	1
TOTAL	12,222	5,021	1,871	11

¹² Child Benefit is administered separately in Great Britain and in Northern Ireland.

19. Applications for Tax Credits

- Between May 2004 and June 2005, 52% of applications for tax credits were approved and 12% were rejected.

Table 17: Applications for Tax Credits. May 2004 – June 2005

	Applications Received	Applications Approved	Applications Rejected	Applications Terminated
Q2 2004	80	0	0	0
Q3 2004	234	51	72	0
Q4 2004	626	201	113	0
Q1 2005	1184	502	126	0
Q2 2005	1320	1027	100	0
TOTAL	3444	1781	411	0

Housing and Homelessness support¹³

20. Local Authority Lettings

- The May 2004 to March 2005 total of 43 lettings to A8 nationals represents just 0.03% of the average number of lettings to all new tenants over a typical 11 month period.

Table 18: Local Authority lettings, by reason. England.

	Currently legally employed	Self-employed	Retired from employment/s elf-employment in UK	Provider or recipient of services	Other	TOTAL	Percentage that arrived in the UK before 1 May 2004
2004 Q2*	0	0	0	0	2	2	100%
Q3	11	0	0	0	1	12	83%
Q4	18	0	0	0	1	19	53%
2005 Q1	9	1	0	0	0	10	80%
TOTAL	38	1	0	0	4	43	70%

* Please note – 2004 Q2 is May and June. All figures are provisional.

21. Homelessness assistance

- The May 2004 to March 2005 total of 581 decisions on A8 applications for homelessness assistance represents just 0.2% of the average number of homelessness decisions over a typical 11 month period.

Table 19: Decisions on applications for assistance¹⁴¹⁵. England.

	Main duty owed to Applicant	Applicant not owed a main duty	TOTAL
2004 Q2*	42	122	164
Q3	66	102	168
Q4	70	53	123
2005 Q1	38	88	126
TOTAL	216	365	581

* Please note – 2004 Q2 is May and June. All Figures are provisional.

¹³ Data not updated from previous report due to reporting changes it will be updated in the next quarterly publication.

¹⁴ Under the homelessness provisions of the 1985 and 1996 Housing Acts.

¹⁵ 'Main duty owed' means that the local authority is required to secure suitable accommodation for applicant and their household.

Accession Monitoring Report, May 2004 – June 2005

- The May 2004 to March 2005 total of 216 A8 acceptances represents just 0.2% of the average number of acceptances of homelessness applications over a typical 11 month period.

Table 20: Homeless households owed a main duty¹⁶ by reason for eligibility. England.

	Currently legally employed	Self-employed	Retired from employment/self-employment in UK	Provider or recipient of services	Other	TOTAL	Percentage that arrived in the UK before 1 May 2004	Percentage of total that were being accommodated at the time main duty accepted
2004 Q2*	19	0	0	3	20	42	90%	67%
Q3	41	0	0	1	24	66	89%	70%
Q4	63	3	0	1	3	70	71%	62%
2005 Q1	30	1	1	0	6	38	68%	55%
TOTAL	153	4	1	5	53	216	80%	62%

* Please note – 2004 Q2 is May and June. All figures are provisional.

¹⁶ 'Main duty owed' means that the local authority is required to secure suitable accommodation for applicant and their household.

ANNEX A

All occupations in which registered workers are employed, Total July 2004 to June 2005 (May and June 2004 unavailable).

Sector	Occupation	TOTAL July 2004 to June 2005
GENERAL	Beautician	80
SERVICES AND	Call centre agent / operator	270
TRADES	Carpenter / joiner	975
	Cleaner, domestic staff	8,895
	Electrician	145
	Floorer and wall tiler	50
	Gardener / landscape gardener	710
	Groundsman	215
	Hairdresser or related occupation	145
	Handyman, general (building and contracting)	675
	Launderer, dry cleaner, presser	690
	Mechanic	575
	Packer	11,650
	Painter and decorator	355
	Plasterer	90
	Plumbers, heating and ventilating engineer	95
	Refuse and salvage occupation	205
	Road sweeper	155
	Roofer, roof tiler and slater	45
	Translator	30
	Window cleaner	25
ADMINISTRATION,	Administrator, comms / marketing / advertising	175
BUSINESS &	Administrator, finance	310
MANAGEMENT	Administrator, general	1,845
	Administrator, Human Resources	210
	Administrator, office	795
	Administrator, records	130
	Director/Senior executive	60
	Manager, customer care	85
	Manager, financial	75

Accession Monitoring Report, May 2004 – June 2005

	Manager, Human Resources / Training	80
	Manager, office	265
	Manager, quality	60
	Personal assistant	325
	Receptionist (office)	450
	Secretary	155
	Senior manager	25
	Typist	25
AGRICULTURE	Agricultural machinery operator	525
	Animal husbandry	230
	Crop harvester	4,010
	Farm worker/ Farm hand	9,145
	Fisherman	30
	Flower picker	530
	Forestry workers	60
	Fruit picker (farming)	1,805
	Manager, farm	25
ARTS,	Actor	5
ENTERTAINMENT,	Administrator, sports and leisure	65
LEISURE & SPORT	Artist / sculptor	30
	Arts officer, Producers or Director	20
	Author, writer	5
	Camera person / Photographer	15
	Circus performer	10
	Circus rigger	40
	Dancer or choreographer	5
	Entertainer	155
	Fitness coach	40
	Leisure and theme park attendants	770
	Leisure and travel service occupations	205
	Lifeguard	35
	Manager, entertainment /arts /leisure	45
	Musicians	35
	Sports and leisure assistants	245
	Sports coach	10
	Sports Manager	†
	Sportsperson (professional)	30
COMPUTER	Administrator, IT	130
	Engineer, hardware (computer)	80

Accession Monitoring Report, May 2004 – June 2005

SERVICES	Engineer, software	110	
	IT strategy and planning professionals	50	
	Manager, IT	25	
	Programmer, computer	95	
	Software analyst	50	
	Systems analyst	40	
CONSTRUCTION &	Bricklayer / mason	445	
LAND SERVICES	Civil engineer	95	
	Construction materials delivery	65	
	Constructor, road	70	
	Constructor, roofing	75	
	Constructor, steel	210	
	Labourer, building	4,585	
	Site manager (construction)	40	
	Site supervisor (construction)	60	
	Skilled machine operator (construction)	315	
	Skilled vehicle operator (construction)	40	
	Supplier, construction materials	25	
	EDUCATIONAL & CULTURAL	Administrator, university	30
		Caretaker, school	40
		Caterer, higher education	5
		Caterer, school	25
Childminders and related occupations		500	
Foreign language teacher (private)		5	
Laboratory assistant		85	
Nursery nurse		175	
Playgroup leader / assistant		100	
Researcher, higher education		120	
School secretary		15	
Teacher, higher education		75	
Teacher, primary and nursery education		35	
Teacher, secondary education		40	
Teacher, special needs education		20	
Teacher's assistant		250	
Tutor (private)		15	
EXTRACTION INDUSTRIES		Engineer, oil and natural gas	20
		Site Manager (extraction industry)	5
		Site Supervisor (extraction industry)	5
	Skilled machinery operator (extraction)	210	

Accession Monitoring Report, May 2004 – June 2005

	Welder	640
	Worker, gas	5
	Worker, oil	5
FINANCIAL SERVICES	Accountant, certified	15
	Accountant, chartered	5
	Accountant, financial	65
	Accountant, trainee	75
	Actuary	†
	Administrator, financial services	105
	Auditor	15
	Bank Manager	†
	Banker, Business	10
	Banker, International	15
	Banker, Investment	10
	Banker, Personal	5
	Cashier (bank, building society)	50
	Financial Adviser	40
	Financial Consultant	50
	Management Accountant	15
FOOD PROCESSING	Baker	730
	Butcher / Meat cutter	735
	Fishmonger / filleter / gutter	320
	Food processing operative (fruit / veg)	3,245
	Food processing operative (meat)	2,715
	Slaughterer, meat	100
GOVERNMENT	Administrator, (government & related)	20
HEALTH & MEDICAL SERVICES	Administrator / receptionist, medical	115
	Administrator, hospital	35
	Alternative/complementary medicine specialist	10
	Anaesthetist	60
	Care assistants and home carers	5,485
	Consultant, hospital	70
	Dental Hygienist	30
	Dental Nurse	135
	Dental practitioner	125
	Dietician	†
	Doctor (hospital)	150
	General Practitioner	30
	Manager, care home	10

Accession Monitoring Report, May 2004 – June 2005

	Manager, health and social services	20
	Midwife	5
	Nurse	95
	Nursing auxiliaries and assistants	180
	Optician	25
	Pharmacist / Pharmacologist	85
	Physiologist	†
	Physiotherapist	15
	Psychiatrist	10
	Psychologist	10
	Researcher (medical)	75
	Residential wardens and Houseparents	70
	Social Worker	110
	Surgeon	25
	Technician, medical	50
	Veterinarian	40
	Ward Sister	5
	Warden (care home)	20
HOSPITALITY & CATERING	Bar staff	3,395
	Chef, head	190
	Chef, other	2,535
	Chef, second	135
	Hotel porter	1,260
	Kitchen and catering assistants	11,800
	Maid / Room attendant (hotel)	6,510
	Manager, bar	55
	Manager, catering	130
	Manager, hotel	80
	Manager, other hospitality	160
	Manager, restaurant	130
	Manager, safety and hygiene	15
	Receptionist, hotel	650
	Waiter, waitress	8,660
LAW RELATED SERVICES	Barrister	10
	Caseworker (legal)	5
	Interpreter	10
	Lawyer / Solicitor	15
	Legal Clerk	20
	Legal secretary	10

Accession Monitoring Report, May 2004 – June 2005

MANUFACTURING	Chemical engineer	45
	Mechanical engineer	200
	Process operative (electronic equipment)	785
	Process operative (other Factory worker)	40,270
	Process operative (Textiles)	585
	Process operative (Vehicle manufacturing)	255
	Production Manager	65
	Supervisor, production	140
	Warehouse manager	25
	Warehouse Supervisor	140
REAL ESTATE & PROPERTY SERVICES	Welder	310
	Architect	80
REAL ESTATE & PROPERTY SERVICES	Architectural Technician	85
	Property sales and lettings	40
REAL ESTATE & PROPERTY SERVICES	Surveyor	40
	Cashier / check-out operator	650
RETAIL & RELATED SERVICES	Cold store operative	35
	Deliveryman	205
	Manager, retail	125
	Market and street traders and assistants	20
	Merchandisers and window dressers	30
	Purchaser (retail trade)	60
	Retailer	170
	Sales and retail assistants	4,965
	Shelf stacker	140
	Supervisor, retail	85
	Telephone salesperson	50
	Telesales Supervisor	10
	Warehouse manager	40
	Warehouse Operative	8,605
	Warehouse Supervisor	45
Wholesaler	10	
SECURITY AND PROTECTION SERVICES	Detention /Custody guard /officer	†
	Policeman/woman	†
	Prison Officer	†
	Secure delivery worker	15
	Security Guard	515
	Supervisor, door /bouncer	20
	Telecommunications administrator	40

Accession Monitoring Report, May 2004 – June 2005

TELECOMMUNICATIONS	Telecommunications administrator	40
	Telecommunications Engineer	70
	Telecommunications Manager	†
	Telecommunications Supervisor	5
TRANSPORT	Air Steward / Stewardess	115
	Airport staff	85
	Conductor, railways	†
	Conductor, bus	10
	Dock Worker	25
	Driver, bus	885
	Driver, coach	60
	Driver, crane	20
	Driver, delivery van	1,315
	Driver, fork-lift	190
	Driver, HGV (Heavy Goods Vehicle)	1,920
	Driver, PCV (Passenger Carrying Vehicle)	170
	Driver, taxi	30
	Engineer, other transport related	155
	Engineer, railway	20
	Ship hand	15
	Ship's Captain	†
	Steward / Stewardess (ferry/shipping)	25
	Ticketeer and station attendants	35
UTILITIES (Gas, Water & Electricity suppliers)	Administrator (utilities)	15
	Engineer, electrical	45
	Engineer, gas	†
	Engineer, water	5
	Maintenance (electrical)	55
	Maintenance (gas)	5
	Maintenance (water/sewage)	10
	Manager, utilities	10
	Power station staff	15
	Sewage Worker	10
	Supervisor (gas/water/electric)	5
	Water works staff	5
	Not Stated	7,365
TOTAL		181,085